

**Student or Staff with Symptoms in School
(Do not attend school with symptoms)**

Do symptoms include:

- **Fever (100°F or more) chills, or shaking chills**
- **Difficulty breathing or shortness of breath**
- **New loss of taste or smell**
- **Muscle aches or body aches**
- **Cough (new or undiagnosed)**
- **Sore throat (in combo w/ other symptoms)**
- **Nausea, vomiting, diarrhea (in combo w/ other symptoms)**
- **Headache (in combo with other symptoms)**
- **Fatigue (in combo with other symptoms)**
- **Nasal congestion or runny nose (not due to other known causes, such as allergies) when in combo w/ other symptoms)**

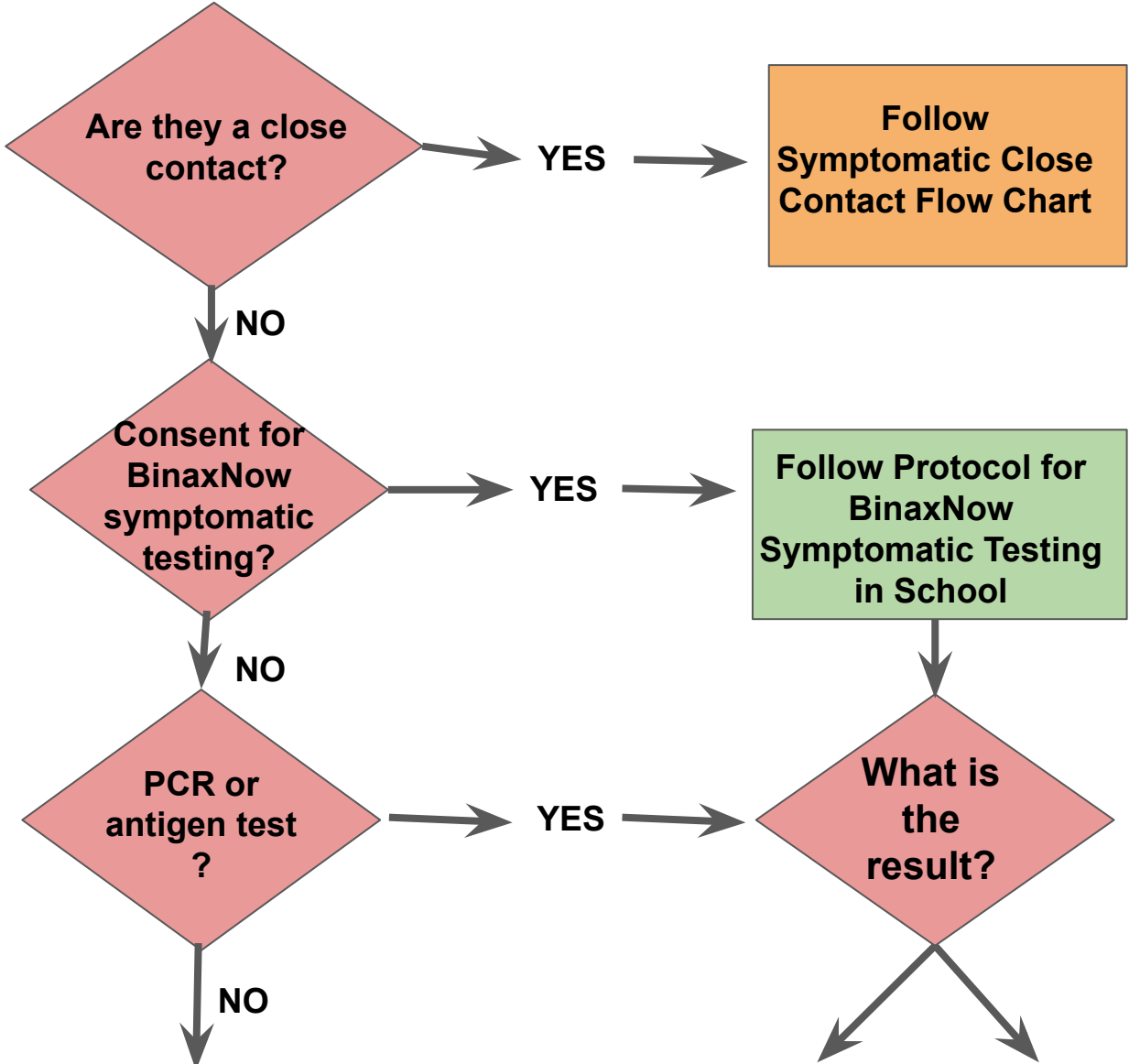
NO

Based on Nursing Judgement - Testing might not be necessary. Any staff or student remaining in school with a symptom should wear a mask

YES

**Follow the flow chart:
Individuals with COVID-19 Symptoms**

Individuals with COVID-19 Symptoms (not close contact)



Symptoms w/ NO TESTING

- Must be without fever for 24 hours without use of fever-reducing medication
- Have improvement of symptoms
- It is recommended that the student or staff has a negative covid test before returning to school

OR

Alternative Diagnosis

- Return to school with written note (MD, NP)

COVID POSITIVE

- Isolate for a min of 5 days
- May return to school on Day 6 if:
 1. No fever x 24 hours
 2. Symptoms improved
 3. Must be able to consistently mask
- If continued symptoms then return to school when improved
- If unable to mask, then return on Day 11.

COVID NEGATIVE

IF mild symptoms:

- May stay in school
- Next day nurse check
- Wear a mask in school

IF moderate symptoms:

1. **Alternative diagnosis**
 - Return to school with written note (MD, NP)
 - No fever x 24 hours
2. **Outside PCR or Antigen Test**
 - Symptoms must be improved
 - Antigen test can be self-administered and does not need to be proctored or performed by a HCP (home test is ok)

**Asymptomatic Close Contacts to Positive Cases of COVID-19
Known Outside of School Exposure
(household close contacts, reported exposures outside of school)**

Are **ALL** 3 of these conditions true?

- Exposed indoors
- Within 48 hrs of symptom onset or positive test date
- Within 6 feet for 15 minutes (cumulative over 24h)

NO

**Not a
close
contact**

YES, Individual is a close contact

**Does the close contact student or staff meet the
definition of fully vaccinated for K-12 (DESE)?**

2 weeks following the completion of the Pfizer or Moderna
series or 2 weeks following a single dose of Johnson &
Johnson Janssen Vaccine

OR had COVID-19 within the past 90 days and recovered with
no current symptoms

YES

**May attend
school as
long as they
are there are
no
symptoms.
Does not
need to mask.**

NO

TRADITIONAL PROTOCOL

Quarantine for 5 days from exposure, return on Day 6 if:

- Remain asymptomatic
- Monitor symptoms and strict mask use through Day 10, isolate if symptoms develop
- If unable to mask, then quarantine for 10 days, return to school on Day 11
- Best practice is to test on Day 5. Antigen test can be self-administered and does not need to be proctored or performed by a HCP
- If unable to mask and testing on Day 5, return Day 8 (consistent w/ old guidance)
- Ask parent to communicate all test results to the school nurse
- If household contact that is unable to isolate from positive individual, then quarantine period starts after positive case completes isolation (5-10 days).

ALL Close Contacts with Symptoms

Close contacts with symptoms:

- Must Isolate
- Get a PCR to rule out COVID-19 (if unable to get PCR call school nurse)
- Can return to original DESE Protocol with a negative PCR after symptoms improve and fever-free

What is the
result of the
COVID-19
test?

POSITIVE

COVID POSITIVE

- Isolate for a minimum of 5 days
- Email isolation guidance letter
- May return to school on Day 6 if:
 1. No fever x 24 hours
 2. Symptoms improved
 3. Must be able to consistently mask
- If continued symptoms then return to school when improved
- If unable to mask, then return on Day 11.

NEGATIVE

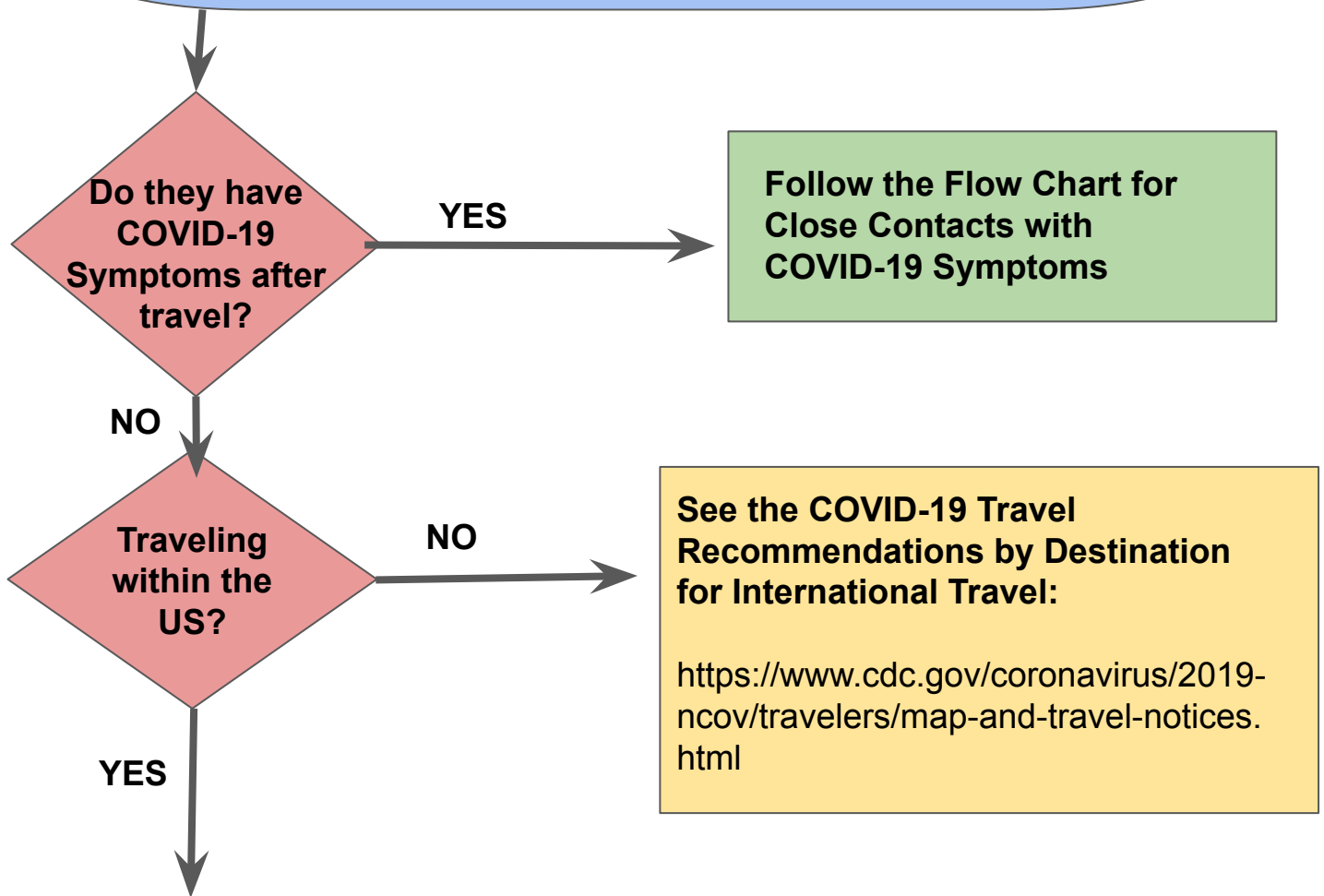
COVID NEGATIVE

Return to protocol that was followed after exposure

Student/Staff must:

1. Remain asymptomatic
2. Monitor symptoms through Day 10 (Isolate again if symptoms develop)
3. Ask parent to communicate all test results to the school nurse

Travel Recommendations from the CDC



CORONAVIRUS DISEASE 2019 (COVID-19)

Domestic Travel

RECOMMENDATIONS AND REQUIREMENTS

Not Vaccinated

Fully Vaccinated

Get tested 1-3 days before travel



Get tested 3-5 days after travel and self-quarantine for 7 days. Self-quarantine for 10 days if you don't get tested.



Self-monitor for symptoms



Wear a mask and take other precautions during travel



[cdc.gov/coronavirus](https://www.cdc.gov/coronavirus)