



**CITY OF GARDNER - EXECUTIVE DEPARTMENT**  
**Mark Hawke, Mayor**

---

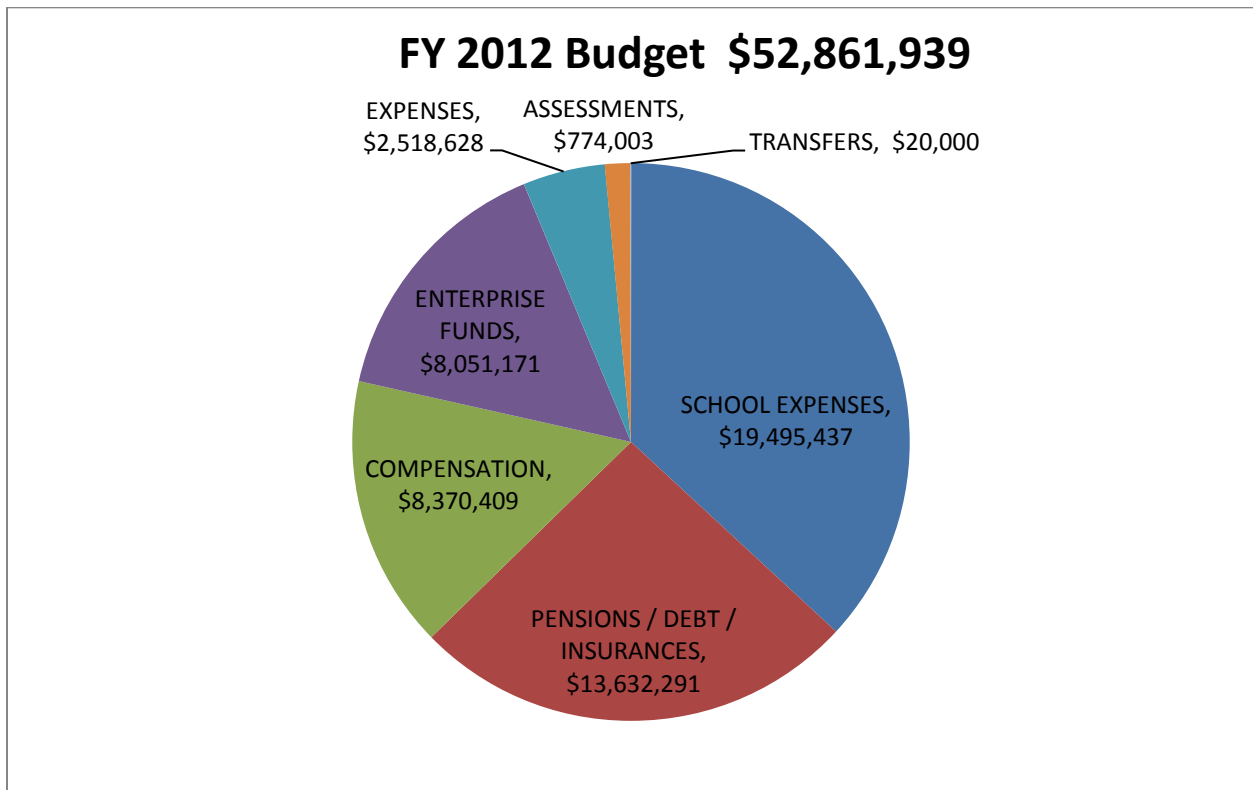
May 16, 2011

The Honorable Neil Janssens  
Council President and  
Gardner City Councilors  
95 Pleasant Street  
Gardner, MA 01440

President Janssens,

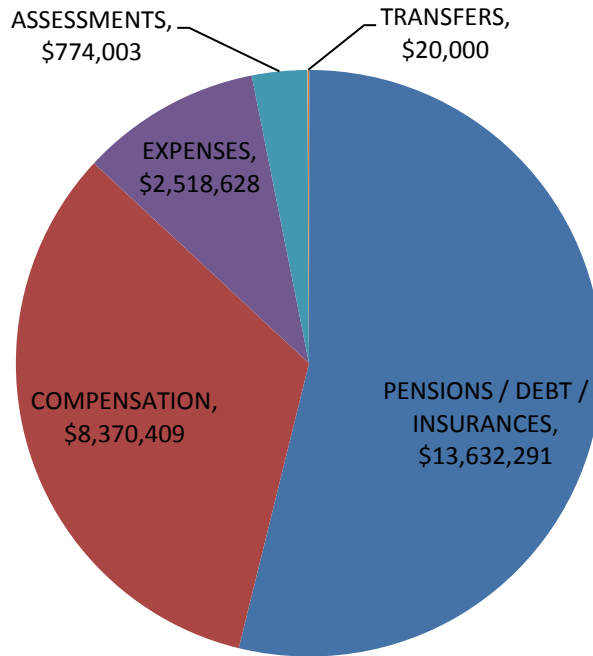
I hereby submit my Fiscal Year 2012 Operating Budget for the City of Gardner.

**Fiscal Year 2012 Budget by functional area:**



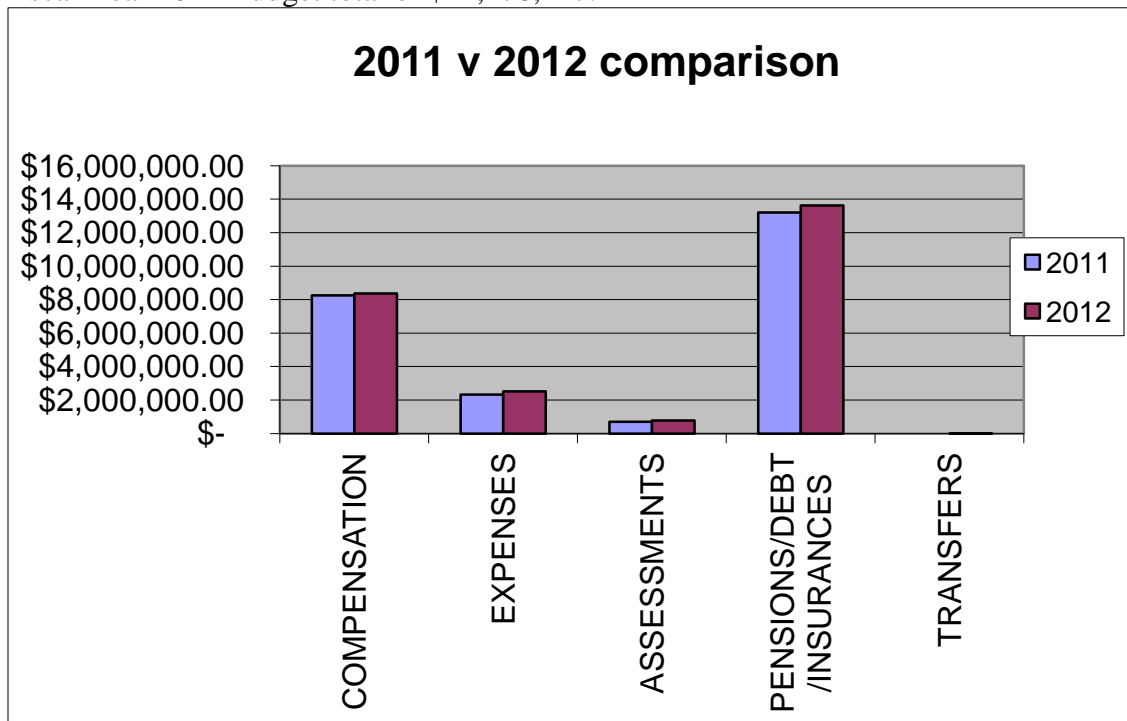
**FY 2012 General Government by functional area**

## FY 2012 General Government \$25,315,331



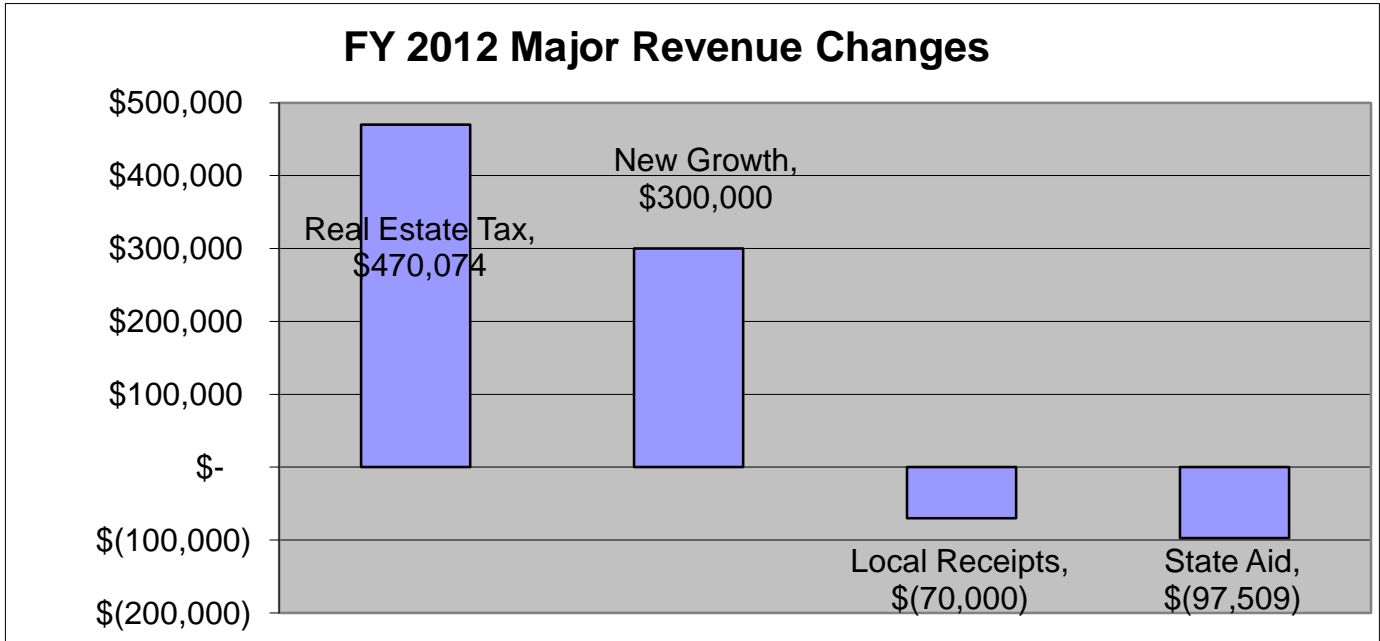
### FY 2011 Comparison to FY 2012

The Fiscal Year 2012 General Government Budget total of \$25,315,331 represents an increase of 3.4% over the Fiscal Year 2011 Budget total of \$24,478,247.



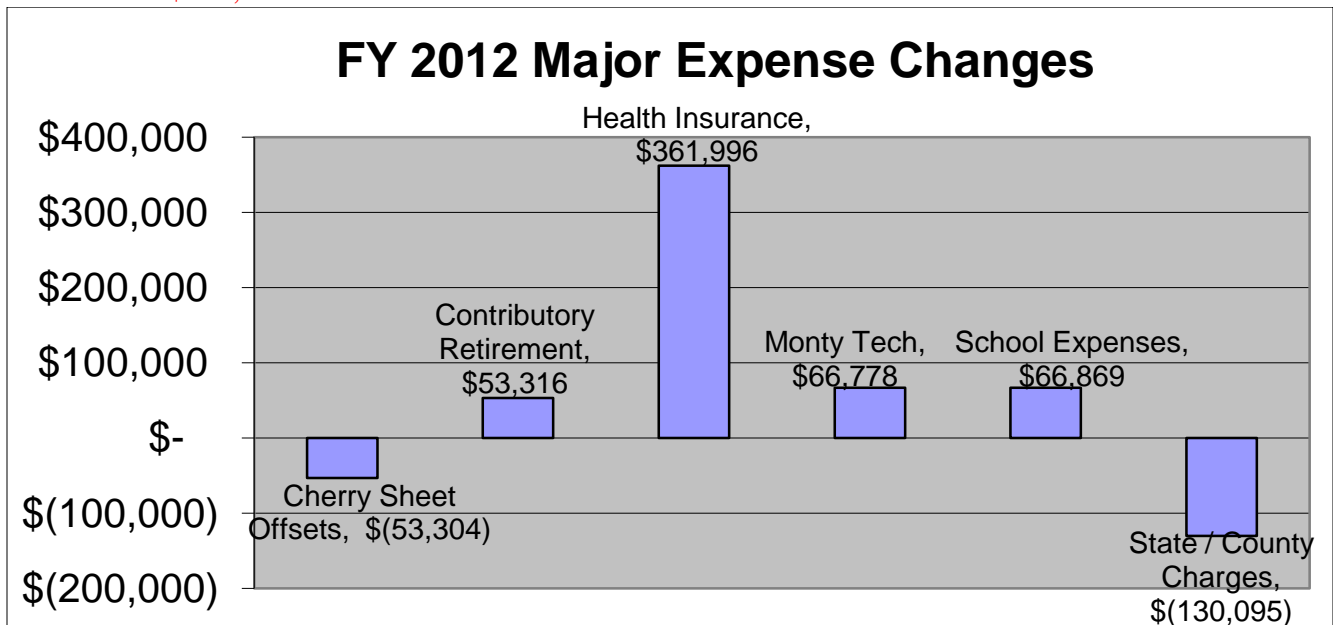
### Fiscal Year 2012 Major Changes – Revenue

The major changes in revenue from FY11 to FY12 are the Real Estate Tax Levy increase of \$470,074, New Tax Growth estimated at \$300,000, a decrease of <\$70,000> in Local Receipts (due mainly to an elimination of Prison Mitigation Funds) and a reduction in State –Aid of <\$97,509> (this is mainly from a local aid reduction of <\$259,152>).



**Fiscal Year 2012 Major Changes – Expenditures**

Major changes in FY 2012 budget expenditures include a Cherry Sheet Offset payment reduction of <\$53,304>, an increase in Contributory Retirement expenses of \$53,316, Health Insurance of \$361,996, Monty Tech Assessment of \$66,778, School Expenses of \$66,869 and a State & County Charges reduction of <\$130,095>.



The continual fall in Cherry Sheet revenue, particularly Local Aid, should be of particular concern to all. The state continues to mandate services and procedures, yet falls far short of meeting their funding obligations to achieve their mandates. In FY 2009 the City received \$5,273,964 in combined Lottery Aid and Additional Assistance. In FY 2012 the City will receive \$3,325,039. This is a \$1,948,925 reduction in local aid funding over the course of four (4) years. This does not include the state elimination of the Prison Mitigation funding estimated at \$90,000.

Also of particular concern is the cost of health insurance, which has seen a \$3,231,025 increase since FY 2006 which equals an eighty-one percent (81%) increase in just six (6) years. This type of expense growth is clearly unsustainable.

Respectfully Submitted,



Mark Hawke  
Mayor, City of Gardner

Line #	ORG/ OBJ	DEPARTMENT	2008 EXPENDED	2009 EXPENDED	2010 EXPENDED	2011 BUDGETED	2012 MAYOR	2012 COUNCIL
1								
2	11111	CITY COUNCIL						
3	51010	COUNCILORS SALARIES	\$ 57,499.80	\$ 68,875.02	\$ 68,634.84	\$ 74,501.00	\$ 74,501.00	
4	51012	CLERK/ASST SAL & WAGES	\$ 5,000.00	\$ 5,000.00	\$ 3,772.09	\$ 4,000.00	\$ 4,000.00	
5	52050	MINOR EQUIPMENT	\$ 449.85	\$ 214.20	\$ 385.00	\$ 500.00	\$ 500.00	
6	52150	COMMUNICATIONS	\$ 7,373.28	\$ 6,655.50	\$ 6,152.37	\$ 8,000.00	\$ 8,000.00	
7	52230	OFFICE SUPPLIES	\$ 1,013.23	\$ 417.21	\$ 818.81	\$ 1,000.00	\$ 1,000.00	
8	55010	GOVERNMENT PICTURE	\$ -	\$ 822.00	\$ -	\$ 900.00	\$ 800.00	
9		* TOT/ 11111	\$ 71,336.16	\$ 81,983.93	\$ 79,763.11	\$ 88,901.00	\$ 88,801.00	
10								
11	11121	MAYOR						
12	51010	MAYOR SALARY & WAGES	\$ 68,400.00	\$ 75,322.50	\$ 78,347.50	\$ 78,953.00	\$ 78,953.00	
13	51011	ADMIN ASSISTANT SALARY & WAGES	\$ -	\$ -	\$ -	\$ -	\$ -	
14	51012	SECRETARY SALARY & WAGES	\$ 39,234.71	\$ 40,153.80	\$ 39,846.12	\$ 40,154.00	\$ 40,154.00	
15	51023	TEMP SALARY & WAGES	\$ 1,563.61	\$ 1,237.00	\$ 1,008.32	\$ 2,000.00	\$ 1,000.00	
16	52030	REPAIRS & MAINTENANCE	\$ 669.70	\$ 1,197.43	\$ 1,187.10	\$ 900.00	\$ 500.00	
17	52040	INFORMATION TECHNOLOGY					\$ 100.00	
18	52050	MINOR EQUIPMENT	\$ -	\$ -	\$ -	\$ 500.00	\$ 250.00	
19	52150	COMMUNICATIONS	\$ 505.96	\$ 2,605.90	\$ 1,068.57	\$ 1,900.00	\$ 1,000.00	
20	52151	TELECOMMUNICATIONS					\$ 1,000.00	
21	52170	PROFESSIONAL DEV & TRAVEL	\$ 96.69	\$ 747.78	\$ 630.13	\$ 900.00	\$ 1,700.00	
22	52190	PROFESSIONAL SERVICES	\$ 4,420.00	\$ 7,156.00	\$ 5,625.97	\$ 5,400.00	\$ 6,250.00	
23	52230	OFFICE SUPPLIES	\$ 2,243.30	\$ 1,122.38	\$ 1,227.06	\$ 900.00	\$ 1,200.00	
24	55010	MAYOR'S PORTRAIT	\$ -	\$ 542.90	\$ -	\$ -	\$ -	
25		* TOT/ 11121	\$ 117,133.97	\$ 130,085.69	\$ 128,940.77	\$ 131,607.00	\$ 132,107.00	
26								
27	11135	CITY AUDITOR						
28	51010	DEPT HEAD SALARY & WAGES	\$ 68,189.80	\$ 70,269.03	\$ 69,730.57	\$ 70,270.00	\$ 70,270.00	
29	51012	CLERK/ASST SAL & WAGES	\$ 35,297.64	\$ 34,734.72	\$ 32,147.14	\$ 34,344.00	\$ 35,298.00	
30	51460	LONGEVITY	\$ 660.00	\$ 520.00	\$ 780.00	\$ 560.00	\$ 635.00	
31	51551	TERMINATION LEAVE	\$ -	\$ -	\$ 4,112.03	\$ -	\$ -	
32	52030	REPAIRS & MAINTENANCE	\$ 145.74	\$ 609.52	\$ -	\$ 100.00	\$ 100.00	
33	52040	INFORMATION TECHNOLOGY						
34	52050	MINOR EQUIPMENT	\$ -	\$ 1,050.53	\$ 1,454.60	\$ 100.00	\$ 100.00	
35	52170	PROFESSIONAL DEV & TRAVEL	\$ 70.00	\$ 177.30	\$ 645.52	\$ 700.00	\$ 1,000.00	
36	52190	PROFESSIONAL SERVICES	\$ 21,300.00	\$ 21,300.00	\$ 29,500.00	\$ 30,200.00	\$ 31,000.00	
37	52230	OFFICE SUPPLIES	\$ 856.45	\$ 1,038.28	\$ 589.71	\$ 1,000.00	\$ 1,000.00	
38		* TOT/ 11135	\$ 126,519.63	\$ 129,699.38	\$ 138,959.57	\$ 137,274.00	\$ 139,403.00	

39  
40  
41  
42  
43  
44

Line #	ORG/ OBJ	DEPARTMENT	2008 EXPENDED	2009 EXPENDED	2010 EXPENDED	2011 BUDGETED	2012 MAYOR	2012 COUNCIL
45	11138	PURCHASING						
46	51010	DEPT HEAD SALARY & WAGES	\$ 62,878.64	\$ 65,250.00	\$ 64,750.00	\$ 65,250.00	\$ 65,250.00	
47	51012	SENIOR ACCOUNT CLERK SAL & WAG	\$ 34,621.44	\$ 22,126.47	\$ 27,463.04	\$ 28,620.00	\$ 28,620.00	
48	51013	ACCOUNT CLERK SALARY & WAGES	\$ 25,765.87	\$ 9,882.91	\$ -	\$ -	\$ -	
49	51030	OVERTIME	\$ -	\$ 207.53	\$ -	\$ -	\$ -	
50	51460	LONGEVITY	\$ 720.00	\$ 565.00	\$ 810.00	\$ 855.00	\$ 900.00	
51	52040	INFORMATION TECHNOLOGY					\$ 2,000.00	
52	52050	MINOR EQUIPMENT	\$ -	\$ 150.00	\$ 193.59	\$ 150.00	\$ 150.00	
53	52150	COMMUNICATIONS	\$ 211.75	\$ 300.34	\$ 237.60	\$ 400.00	\$ 750.00	
54	52170	PROFESSIONAL DEV & TRAVEL	\$ 1,182.71	\$ 786.21	\$ 1,151.32	\$ 1,500.00	\$ 1,500.00	
55	52190	PROFESSIONAL SERVICES	\$ 1,209.25	\$ 1,390.00	\$ 908.00	\$ 1,250.00	\$ -	
56	52230	OFFICE SUPPLIES	\$ 1,100.46	\$ 1,683.22	\$ 1,627.27	\$ 1,250.00	\$ 1,500.00	
57		* TOT/ 11138	\$ 127,690.12	\$ 102,341.68	\$ 97,140.82	\$ 99,275.00	\$ 100,670.00	
58	11141	ASSESSORS						
59	51010	CHAIRMAN ASSESS SAL&WAGES	\$ 63,475.74	\$ 65,250.00	\$ 64,346.12	\$ 70,270.00	\$ 60,231.00	
60	51012	CLERK/ASST SAL & WAGES	\$ 35,130.60	\$ 34,535.99	\$ 33,913.48	\$ 35,131.00	\$ 27,265.00	
61	51013	P/T CLERK/ASST SAL & WGS	\$ 15,932.48	\$ 3,647.00	\$ -	\$ -	\$ -	
62	51014	ASSESSORS PART TIME SAL&W	\$ 2,500.05	\$ 2,000.04	\$ 4,000.08	\$ 4,001.00	\$ 4,001.00	
63	51460	LONGEVITY	\$ 1,380.00	\$ 1,255.00	\$ 1,230.00	\$ 360.00	\$ 1,000.00	
64	52030	REPAIRS & MAINTENANCE			\$ 32,327.72			
65	52040	INFORMATION TECHNOLOGY					\$ 33,000.00	
66	52150	COMMUNICATIONS					\$ 2,200.00	
67	52170	PROFESSIONAL DEV & TRAVEL	\$ 201.00	\$ 201.00	\$ 264.00	\$ 1,000.00	\$ 3,700.00	
68	52190	PROFESSIONAL SERVICES	\$ 123.35	\$ 122.10	\$ 123.40	\$ 300.00	\$ 500.00	
69	52230	OFFICE SUPPLIES	\$ 4,267.73	\$ 5,026.62	\$ 1,992.84	\$ 3,000.00	\$ 3,000.00	
70	55040	VALUATION MAINTENANCE	\$ 5,400.00	\$ 6,800.00	\$ 7,300.00	\$ 7,300.00	\$ 12,500.00	
71	55050	VALUATION UPDATE	\$ 40,125.00	\$ 69,431.00	\$ 71,786.00	\$ 65,000.00	\$ 81,050.00	
72		* TOT/ 11141	\$ 168,535.95	\$ 188,268.75	\$ 217,283.64	\$ 186,362.00	\$ 228,447.00	
73	11145	CITY TREASURER						
74	51010	DEPT HEAD SALARY & WAGES	\$ 63,475.74	\$ 65,250.00	\$ 72,221.82	\$ 72,780.00	\$ 72,780.00	
75	51011	ASSISTANT SALARY & WAGES	\$ 24,459.35	\$ 23,900.78	\$ 31,256.39	\$ 36,199.00	\$ 36,199.00	
76	51015	COMP PROG/OP SAL & WAGES	\$ 54,033.47	\$ 55,211.42	\$ 54,788.41	\$ 55,212.00	\$ 55,212.00	
77	51018	PARKING METER CLERK	\$ 9,787.50	\$ 7,822.50	\$ 7,852.50	\$ 7,830.00	\$ 7,830.00	
78	51030	OVERTIME	\$ -	\$ -	\$ -	\$ 400.00	\$ 400.00	
79	51460	LONGEVITY	\$ 1,170.00	\$ 830.00	\$ 1,365.00	\$ 1,440.00	\$ 1,555.00	
80	52033	PARKING METER MAINTENANCE	\$ 70.26	\$ 2,902.00	\$ 5,579.97	\$ 4,000.00	\$ 4,000.00	
81	52040	INFORMATION TECHNOLOGY	\$ 84,644.99	\$ 91,166.19	\$ 102,385.75	\$ 115,000.00	\$ 140,000.00	
82	52050	MINOR EQUIPMENT	\$ 755.03	\$ 5,935.20	\$ 442.40	\$ 800.00	\$ 800.00	
83	52170	PROFESSIONAL DEV & TRAVEL	\$ 727.47	\$ 1,276.09	\$ 250.30	\$ 1,000.00	\$ 1,000.00	
84	52190	PROFESSIONAL SERVICES	\$ 15,759.09	\$ 18,146.60	\$ 15,339.34	\$ 36,500.00	\$ 36,000.00	
85	52230	OFFICE SUPPLIES	\$ 1,973.70	\$ 727.03	\$ 1,858.62	\$ 1,750.00	\$ 1,750.00	
86	52250	POSTAGE	\$ 47,098.82	\$ 52,516.80	\$ 41,686.42	\$ 48,500.00	\$ 48,500.00	
87	52280	CENTRAL COPIER	\$ 2,652.12	\$ 1,628.35	\$ 1,964.12	\$ 4,000.00	\$ 4,000.00	
88		* TOT/ 11145	\$ 306,607.54	\$ 327,312.96	\$ 336,991.04	\$ 385,411.00	\$ 410,026.00	

Line #	ORG/ OBJ	DEPARTMENT	2008 EXPENDED	2009 EXPENDED	2010 EXPENDED	2011 BUDGETED	2012 MAYOR	2012 COUNCIL
89								
90	11146	TAX COLLECTOR						
91	51012	SENIOR ACCT CLERK SAL&WGS	\$ 35,297.64	\$ 34,672.58	\$ 34,102.66	\$ 35,298.00	\$ 35,298.00	
92	51013	SENIOR CLERK	\$ 31,864.45	\$ 16,359.52	\$ -	\$ -	\$ -	
93	51460	LONGEVITY	\$ 1,110.00	\$ 990.00	\$ 1,020.00	\$ 1,050.00	\$ 1,090.00	
94	52030	REPAIRS & MAINTENANCE	\$ -	\$ -	\$ -	\$ -	\$ 840.00	
95	52050	MINOR EQUIPMENT	\$ 113.15	\$ 13.01	\$ 1,712.00	\$ 500.00	\$ 500.00	
96	52150	COMMUNICATIONS	\$ 627.30	\$ 765.00	\$ 673.20	\$ 1,000.00	\$ 200.00	
97	52170	PROFESSIONAL DEV & TRAVEL	\$ 120.00	\$ 90.00	\$ -	\$ 500.00	\$ 500.00	
98	52190	PROFESSIONAL SERVICES	\$ 1,575.00	\$ 5,267.12	\$ 2,375.92	\$ 2,400.00	\$ 2,400.00	
99	52230	OFFICE SUPPLIES	\$ 1,968.94	\$ 1,751.09	\$ 565.07	\$ 2,000.00	\$ 2,000.00	
100	52250	POSTAGE	\$ -	\$ -	\$ 7,677.14	\$ 8,000.00	\$ 8,000.00	
101		* TOT/ 11146	\$ 72,676.48	\$ 59,908.32	\$ 48,125.99	\$ 50,748.00	\$ 50,828.00	
102	11151	LAW						
103	51010	DEPT HEAD SALARY & WAGES	\$ 57,872.84	\$ 69,767.39	\$ 69,232.89	\$ 69,768.00	\$ 69,768.00	
104	51011	ASSISTANT SALARY & WAGES	\$ 31,428.78	\$ 38,563.80	\$ 38,268.28	\$ 38,564.00	\$ 38,564.00	
105	52170	PROFESSIONAL DEV & TRAVEL	\$ 560.00	\$ 2,437.56	\$ 2,311.48	\$ 1,000.00	\$ 1,000.00	
106	52230	OFFICE SUPPLIES	\$ 1,282.41	\$ 675.79	\$ 127.74	\$ 2,500.00	\$ 2,500.00	
107	55051	DEPOSITION & DISCOVERY	\$ 285.00	\$ 295.66	\$ 1,273.18	\$ 500.00	\$ 500.00	
108		* TOT/ 11151	\$ 91,429.03	\$ 111,740.20	\$ 111,213.57	\$ 112,332.00	\$ 112,332.00	
109	11152	PERSONNEL						
110	51010	DEPT HEAD SALARY & WAGES	\$ 68,169.10	\$ 70,269.03	\$ 69,730.53	\$ 70,270.00	\$ 70,270.00	
111	51023	TEMP P/T CLERK/TYPIST	\$ 5,411.52	\$ 5,145.28	\$ 12,408.11	\$ 16,363.00	\$ 16,363.00	
112	51460	LONGEVITY	\$ 180.00	\$ 10.00	\$ 240.00	\$ 270.00	\$ 300.00	
113	51551	TERMINATION LEAVE	\$ -	\$ -	\$ -	\$ -	\$ -	
114	52050	MINOR EQUIPMENT	\$ 185.47	\$ -	\$ -	\$ 1,500.00	\$ 1,500.00	
115	52150	COMMUNICATIONS	\$ 1,421.20	\$ 402.27	\$ 1,292.72	\$ 1,000.00	\$ 1,000.00	
116	52170	PROFESSIONAL DEV & TRAVEL	\$ 814.42	\$ 523.05	\$ 482.00	\$ 2,000.00	\$ 2,000.00	
117	52190	PROFESSIONAL SERVICES	\$ 8,062.56	\$ 2,258.84	\$ 1,452.00	\$ 7,500.00	\$ 7,000.00	
118	52191	V.I.P.S. PROGRAM	\$ -	\$ -	\$ -	\$ 10,000.00	\$ 10,000.00	
119	52230	OFFICE SUPPLIES	\$ 404.15	\$ 228.44	\$ 1,430.20	\$ 1,500.00	\$ 1,500.00	
120	57200	CLEANING CONTRACT	\$ -	\$ 8,890.00	\$ -	\$ -	\$ -	
121		* TOT/ 11152	\$ 84,648.42	\$ 87,726.91	\$ 87,035.56	\$ 110,403.00	\$ 109,933.00	
122	11161	CITY CLERK						
123	51010	DEPT HEAD SALARY & WAGES	\$ 63,745.60	\$ 65,250.00	\$ 53,490.35	\$ 60,231.00	\$ 60,231.00	
124	51011	ASSISTANT SALARY & WAGES	\$ 36,198.61	\$ 35,557.59	\$ 34,972.94	\$ 36,199.00	\$ 36,199.00	
125	51012	SENIOR CLERK SAL & WAGES	\$ 31,864.45	\$ 31,300.26	\$ 26,609.97	\$ 26,352.00	\$ 30,142.00	
126	51460	LONGEVITY	\$ 2,310.00	\$ 2,200.00	\$ 720.00	\$ 750.00	\$ 400.00	
127	51551	TERMINATION LEAVE	\$ -	\$ -	\$ 41,250.02	\$ -	\$ -	
128	52050	MINOR EQUIPMENT	\$ 328.15	\$ 120.00	\$ 510.99	\$ 500.00	\$ 500.00	
129	52170	PROFESSIONAL DEV & TRAVEL	\$ 275.00	\$ 400.00	\$ 195.00	\$ 500.00	\$ 500.00	
130	52190	PROFESSIONAL SERVICES	\$ -	\$ 1,887.00	\$ 5,963.10	\$ 2,000.00	\$ 8,300.00	
131	52230	OFFICE SUPPLIES	\$ 624.98	\$ 295.67	\$ 2,998.51	\$ 1,000.00	\$ 1,000.00	
132		* TOT/ 11161	\$ 135,346.79	\$ 137,010.52	\$ 166,710.88	\$ 127,532.00	\$ 137,272.00	







Line #	ORG/ OBJ	DEPARTMENT	2008 EXPENDED	2009 EXPENDED	2010 EXPENDED	2011 BUDGETED	2012 MAYOR	2012 COUNCIL
221	11199	MAYOR'S UNCLASSIFIED						
222	51551	TERMINATION LEAVE - RESERVE	\$ -	\$ -	\$ -	\$ 210,000.00	\$ 200,538.00	
223	58000	CAPITAL IMPROVEMENT PLAN	\$ -	\$ -	\$ -	\$ -	\$ -	
224	52152	TELEPHONE	\$ 63,609.66	\$ 54,488.80	\$ 68,110.61	\$ 50,000.00	\$ 45,000.00	
225	52171	MASS MUNICIPAL DUES	\$ 2,517.00	\$ 2,430.00	\$ 2,430.00	\$ 2,500.00	\$ 2,500.00	
226	52191	MEDICAL EXAMS	\$ 2,463.00	\$ 1,876.00	\$ 8,829.00	\$ 5,000.00	\$ 10,000.00	
227	52192	UNCLASSIFIED LABOR LAW	\$ 15,625.00	\$ -	\$ -	\$ -	\$ -	
228	52193	ARBITRATION	\$ 200.00	\$ -	\$ 1,137.50	\$ 100.00	\$ 100.00	
229	52194	PRINTING & BINDING	\$ -	\$ -	\$ -	\$ 200.00	\$ 100.00	
230	52195	BUILDING DEMOLITION	\$ -	\$ -	\$ -	\$ -	\$ -	
231	52993	SUMMER CELEBRATIONS	\$ -	\$ -	\$ -	\$ -	\$ -	
232	52210	ICE STORM EXPENSES	\$ -	\$ -	\$ 49,059.68	\$ -	\$ -	
233	56900	MONT REG PLANN COMMISSION	\$ 5,234.38	\$ 5,365.24	\$ 5,499.37	\$ 5,637.00	\$ 5,778.00	
234	56902	TAXES OTHER TOWNS	\$ 2,503.47	\$ 1,791.25	\$ 1,847.03	\$ 2,000.00	\$ 2,000.00	
235	57303	WATER	\$ 16,936.34	\$ 17,152.12	\$ 15,995.32	\$ 20,000.00	\$ 20,000.00	
236	57500	DAMAGES PERS & PROPERTY	\$ 6,155.00	\$ 3,750.00	\$ 5,000.00	\$ 3,000.00	\$ 3,000.00	
237	58100	BOND - LAND ACQUISITION	\$ -	\$ -	\$ 18,025.00	\$ -	\$ -	
238	* TOT/ 11199		\$ 115,243.85	\$ 86,853.41	\$ 175,933.51	\$ 298,437.00	\$ 289,016.00	

239

240

241

242

243

244

245

246

247

248

249

250

251

252

253

254

255

256

257

258

259

260

261

262

263

264



Line #	ORG/ OBJ	DEPARTMENT	2008 EXPENDED	2009 EXPENDED	2010 EXPENDED	2011 BUDGETED	2012 MAYOR	2012 COUNCIL
309	12220	FIRE						
310	51010	DEPT HEAD SALARY & WAGES	\$ 76,216.75	\$ 77,296.21	\$ 76,703.69	\$ 77,297.00	\$ 77,297.00	
311	51011	CAPTAINS SALARY & WAGES	\$ 58,445.92	\$ 58,445.92	\$ 60,484.95	\$ 63,173.00	\$ 63,906.00	
312	51012	SENIOR CLERK SAL & WAGES	\$ 31,864.45	\$ 31,300.26	\$ 30,785.42	\$ 31,865.00	\$ 31,865.00	
313	51013	PRIVATES SALARY & WAGES	\$ 999,184.85	\$ 932,146.23	\$ 942,030.65	\$ 965,918.00	\$ 999,053.00	
314	51016	LIEUTENANTS SALARY&WAGES	\$ 328,854.38	\$ 341,234.77	\$ 328,153.13	\$ 340,862.00	\$ 347,678.00	
315	51030	OVERTIME	\$ 154,627.72	\$ 164,790.78	\$ 99,309.17	\$ 129,000.00	\$ 150,000.00	
316	51050	HOLIDAY PAY	\$ 148,482.35	\$ 142,298.30	\$ 143,245.65	\$ 150,451.00	\$ 150,249.00	
317	51101	COLLEGE CREDITS	\$ 23,840.00	\$ 23,260.00	\$ 23,380.00	\$ 23,380.00	\$ 24,100.00	
318	51102	COLLATERAL JOBS	\$ 42,274.52	\$ 41,295.61	\$ 35,542.32	\$ 40,000.00	\$ 45,000.00	
319	51103	EDUCATIONAL INCENTIVE	\$ 3,081.78	\$ 307.06	\$ 1,267.86	\$ 4,000.00	\$ 3,000.00	
320	51104	EMT RATING	\$ 18,939.69	\$ 19,208.36	\$ 22,595.02	\$ 23,069.00	\$ 22,742.00	
321	51105	SICK LEAVE INCENTIVE	\$ 2,822.30	\$ 1,221.26	\$ 2,668.20	\$ 3,000.00	\$ 3,500.00	
322	51200	PHYSICAL FITNESS	\$ 7,200.00	\$ 6,000.00	\$ 6,400.00	\$ 7,200.00	\$ 8,400.00	
323	51460	LONGEVITY	\$ 17,010.00	\$ 16,720.00	\$ 6,900.00	\$ 1,800.00	\$ 1,870.00	
324	51551	TERMINATION LEAVE	\$ 59,806.36	\$ -	\$ 72,850.62	\$ -	\$ -	
325	52030	REPAIRS & MAINTENANCE	\$ 64,300.42	\$ 50,589.88	\$ 51,634.77	\$ 60,000.00	\$ 55,000.00	
326	52040	INFORMATION TECHNOLOGY					\$ 7,000.00	
327	52050	MINOR EQUIPMENT	\$ 6,270.43	\$ 12,568.80	\$ 9,155.35	\$ 10,000.00	\$ 12,000.00	
328	52110	ENERGY & UTILITIES	\$ 41,929.44	\$ 43,704.71	\$ 30,159.65	\$ 31,000.00	\$ 31,000.00	
329	52150	COMMUNICATIONS	\$ 2,583.71	\$ 2,980.72	\$ 2,647.88	\$ 3,000.00	\$ 1,000.00	
330	52151	TELECOMMUNICATIONS					\$ 3,500.00	
331	52170	PROFESSIONAL DEV & TRAVEL	\$ 3,961.73	\$ 12,011.31	\$ 4,471.41	\$ 5,500.00	\$ 5,500.00	
332	52190	PROFESSIONAL SERVICES	\$ 1,311.26	\$ -	\$ 1,340.00	\$ 2,000.00	\$ 2,500.00	
333	52230	OFFICE SUPPLIES	\$ 3,990.23	\$ 3,807.79	\$ 4,693.10	\$ 4,400.00	\$ 4,400.00	
334	52238	FIRE PREVENT/TRAINING SUPPLIES	\$ 1,993.65	\$ 367.56	\$ 349.89	\$ 2,200.00	\$ 2,200.00	
335	52240	VEHICLE SUPPLIES					\$ 16,000.00	
336	55114	PROTECTIVE FF CLOTHING	\$ 3,351.98	\$ 1,541.00	\$ 3,898.01	\$ 12,500.00	\$ 24,500.00	
337	55135	COMPUTER LIC & SUPPORT	\$ 5,734.00	\$ 5,680.00	\$ 5,879.00	\$ 6,000.00	\$ -	
338	55204	REPLACE SCBA SYSTEM	\$ 1,075.00	\$ -	\$ 25,800.00	\$ -	\$ -	
339	57090	CLOTH/UNIFORM ALLOWANCE	\$ 27,400.00	\$ 24,800.00	\$ -	\$ 26,000.00	\$ 25,600.00	
340	57800	BUILDING REPAIRS	\$ -	\$ -	\$ -	\$ -	\$ 10,000.00	
341	* TOT/ 12220		\$ 2,136,552.92	\$ 2,013,576.53	\$ 1,992,345.74	\$ 2,023,615.00	\$ 2,128,860.00	
342	12240	DISPATCHERS						
343	51013	FULL TIME DISPATCHERS SAL	\$ 155,869.20	\$ 113,918.15	\$ 105,118.32	\$ 155,870.00	\$ 187,044.00	
344	51022	PART TIME DISPATCHERS SAL	\$ 20,436.64	\$ 11,960.36	\$ 19,434.76	\$ 20,000.00	\$ 20,000.00	
345	51030	OVERTIME	\$ 16,512.01	\$ 12,382.09	\$ 23,857.04	\$ 20,000.00	\$ 30,000.00	
346	51032	COMPENSATORY TIME	\$ 623.75	\$ 1,483.18	\$ (2,307.35)	\$ -	\$ -	
347	51050	HOLIDAY PAY	\$ 11,560.04	\$ 10,690.94	\$ 10,779.46	\$ 13,000.00	\$ 12,810.00	
348	51100	SHIFT DIFFERENTIAL	\$ 11,061.25	\$ 11,361.10	\$ 10,872.09	\$ 11,000.00	\$ 12,000.00	
349	51200	PHYSICAL FITNESS	\$ -	\$ -	\$ -	\$ 200.00	\$ 200.00	
350	51460	LONGEVITY	\$ 300.00	\$ 495.00	\$ 750.00	\$ 1,125.00	\$ 840.00	
351	57090	CLOTH/UNIFORM ALLOWANCE	\$ 2,875.00	\$ 2,900.00	\$ 2,500.00	\$ 3,000.00	\$ 3,300.00	
352	* TOT/ 12240		\$ 219,237.89	\$ 165,190.82	\$ 171,004.32	\$ 224,195.00	\$ 266,194.00	

Line #	ORG/ OBJ	DEPARTMENT	2008 EXPENDED	2009 EXPENDED	2010 EXPENDED	2011 BUDGETED	2012 MAYOR	2012 COUNCIL
353	12241	BUILDING INSPECTOR						
354	51010	DEPT HEAD SALARY & WAGES	\$ 67,991.20	\$ 70,269.03	\$ 69,730.53	\$ 70,270.00	\$ 70,270.00	
355	51011	ASST BLDG INSP SAL & WGS	\$ 50,488.09	\$ -	\$ -	\$ 50,000.00	\$ 52,200.00	
356	51012	CLERK/ASST SAL & WAGES	\$ 35,130.60	\$ 34,508.50	\$ 33,940.98	\$ 35,131.00	\$ 35,131.00	
357	51013	P/T CLERK/ASST SAL & WGS	\$ 25,539.13	\$ 17,471.39	\$ 18,542.96	\$ 17,225.00	\$ 17,225.00	
358	51023	ALT BUILDING INSPECTOR	\$ -	\$ 108.00	\$ 162.00	\$ 4,000.00	\$ -	
359	51030	OVERTIME	\$ -	\$ 61.87	\$ -	\$ 100.00	\$ 100.00	
360	51460	LONGEVITY	\$ 1,140.00	\$ 850.00	\$ 1,110.00	\$ 1,245.00	\$ 1,000.00	
361	51551	TERMINATION LEAVE	\$ -	\$ 800.00	\$ -	\$ -	\$ -	
362	52020	BUILDING MAINTENANCE	\$ 96.65	\$ 8,074.70	\$ 225.00	\$ 1,100.00	\$ 1,100.00	
363	52030	REPAIRS & MAINTENANCE	\$ 753.55	\$ 116.50	\$ -	\$ 2,500.00	\$ 2,500.00	
364	52040	INFORMATION TECHNOLOGY					\$ 1,500.00	
365	52050	MINOR EQUIPMENT	\$ 287.95	\$ 195.50	\$ 241.46	\$ 500.00	\$ 500.00	
366	52150	COMMUNICATIONS	\$ 1,531.88	\$ 1,356.00	\$ 1,353.55	\$ 1,500.00	\$ 500.00	
367	52151	TELECOMMUNICATIONS					\$ 1,200.00	
368	52170	PROFESSIONAL DEV & TRAVEL	\$ 1,118.63	\$ 992.76	\$ 593.62	\$ 1,500.00	\$ 1,500.00	
369	52190	PROFESSIONAL SERVICES	\$ 131.00	\$ 55.40	\$ 92.90	\$ 200.00	\$ 200.00	
370	52230	OFFICE SUPPLIES	\$ 802.15	\$ 467.54	\$ 839.40	\$ 1,200.00	\$ 1,200.00	
371	52240	VEHICLE SUPPLIES	\$ 352.39	\$ 1,453.39	\$ 416.94	\$ 1,000.00	\$ 1,000.00	
372	52280	COPIER EXPENSES	\$ -	\$ -	\$ -	\$ 150.00	\$ 150.00	
373	57090	CLOTH/UNIFORM ALLOWANCE	\$ 700.00	\$ 350.00	\$ 350.00	\$ 700.00	\$ 700.00	
374		* TOT/ 12241	\$ 186,063.22	\$ 137,130.58	\$ 127,599.34	\$ 188,321.00	\$ 187,976.00	
375	12243	PLUMBING & GAS INSPECTOR						
376	51010	PLUMBING & GAS INSP SALARY & W	\$ 30,816.54	\$ 24,748.70	\$ 14,208.66	\$ 24,019.00	\$ 19,215.00	
377	51023	ALTERNATE PLUMBING INSPECTOR	\$ -	\$ 401.45	\$ 3,779.89	\$ 3,000.00	\$ 3,000.00	
378	51551	TERMINATION LEAVE	\$ -	\$ -	\$ 1,288.34	\$ -	\$ -	
379	52050	MINOR EQUIPMENT	\$ -	\$ -	\$ -	\$ 100.00	\$ 100.00	
380	52170	PROFESSIONAL DEV & TRAVEL	\$ 1,511.12	\$ 311.75	\$ 75.00	\$ 1,000.00	\$ 1,000.00	
381	57090	CLOTH/UNIFORM ALLOWANCE	\$ 350.00	\$ 350.00	\$ -	\$ 350.00	\$ 350.00	
382		* TOT/ 12243	\$ 32,677.66	\$ 25,811.90	\$ 19,351.89	\$ 28,469.00	\$ 23,665.00	
383	12244	WEIGHTS & MEASURES						
384	51010	DEPT HEAD SALARY & WAGES	\$ 8,082.65	\$ 8,082.65	\$ 8,082.64	\$ 8,083.00	\$ 8,083.00	
385	52230	OFFICE SUPPLIES	\$ -	\$ 236.00	\$ 1,017.50	\$ 200.00	\$ 200.00	
386		* TOT/ 12244	\$ 8,082.65	\$ 8,318.65	\$ 9,100.14	\$ 8,283.00	\$ 8,283.00	
387	12245	WIRE INSPECTOR/FIRE ALARM						
388	51010	WIRE INSPECTOR SALARY & WAGES	\$ 47,663.82	\$ 46,819.88	\$ 46,136.18	\$ 47,664.00	\$ 47,664.00	
389	51023	TEMP INSPECTOR SALARY & WAGES	\$ 1,460.00	\$ 1,800.00	\$ 2,200.00	\$ 2,500.00	\$ 2,500.00	
390	52030	REPAIRS & MAINTENANCE	\$ 1,173.06	\$ 4,239.98	\$ 6,541.84	\$ 7,000.00	\$ 7,000.00	
391	52050	MINOR EQUIPMENT	\$ 579.06	\$ -	\$ 1,641.34	\$ 750.00	\$ 750.00	
392	52110	ENERGY & UTILITIES	\$ 5,230.10	\$ 4,846.13	\$ 4,585.36	\$ 5,500.00	\$ 5,500.00	
393	52170	PROFESSIONAL DEV & TRAVEL	\$ 447.55	\$ 86.59	\$ 130.80	\$ 500.00	\$ 500.00	
394	55120	LONGEVITY	\$ -	\$ 150.00	\$ 180.00	\$ 210.00	\$ -	
395	57090	CLOTH/UNIFORM ALLOWANCE	\$ 350.00	\$ 350.00	\$ 350.00	\$ 350.00	\$ 350.00	
396		* TOT/ 12245	\$ 56,903.59	\$ 58,292.58	\$ 61,765.52	\$ 64,474.00	\$ 64,264.00	

Line #	ORG/ OBJ	DEPARTMENT	2008 EXPENDED	2009 EXPENDED	2010 EXPENDED	2011 BUDGETED	2012 MAYOR	2012 COUNCIL
397	12290	ANIMAL CONTROL OFFICER						
398	51010	ANIMAL CONTROL OFFICER SALARY	\$ 34,424.76	\$ 35,134.77	\$ 34,865.54	\$ 35,135.00	\$ 35,135.00	
399	51023	ALT ANIMAL CONTROL OFFICER	\$ 3,754.89	\$ -	\$ -	\$ 1,000.00	\$ 1,000.00	
400	51030	OVERTIME	\$ 2,374.50	\$ 228.53	\$ 88.95	\$ 500.00	\$ 500.00	
401	51460	LONGEVITY	\$ 210.00	\$ 40.00	\$ 270.00	\$ 300.00	\$ 330.00	
402	57090	CLOTH/UNIFORM ALLOWANCE	\$ 700.00	\$ 350.00	\$ 350.00	\$ 350.00	\$ 350.00	
403	52030	REPAIRS & MAINTENANCE			\$ -	\$ 1,000.00	\$ 1,000.00	
404	* TOT/ 12290		\$ 41,464.15	\$ 35,753.30	\$ 35,574.49	\$ 38,285.00	\$ 38,315.00	
405	12291	CIVIL DEFENSE						
406	51010	DEPT HEAD SALARY & WAGES	\$ 7,905.36	\$ 7,905.36	\$ 5,405.36	\$ 7,906.00	\$ 7,906.00	
407	52050	MINOR EQUIPMENT	\$ 1,240.87	\$ 73.04	\$ 1,157.88	\$ 700.00	\$ 900.00	
408	52170	PROFESSIONAL DEV & TRAVEL	\$ 196.59	\$ 818.78	\$ 129.00	\$ 700.00	\$ 500.00	
409	52230	OFFICE SUPPLIES	\$ 168.13	\$ -	\$ -	\$ 100.00	\$ 100.00	
410	52996	EMERGENCY FUND	\$ 555.65	\$ -	\$ -	\$ 500.00	\$ 500.00	
411	* TOT/ 12291		\$ 10,066.60	\$ 8,797.18	\$ 6,692.24	\$ 9,906.00	\$ 9,906.00	
412	12292	ANIMAL SHELTER						
413	51023	SHELTER ATTENDANTS	\$ 12,350.04	\$ 12,882.00	\$ 15,900.63	\$ 18,845.00	\$ 19,154.00	
414	52030	REPAIRS & MAINTENANCE	\$ 3,407.33	\$ 1,717.14	\$ 2,809.83	\$ 3,000.00	\$ 3,000.00	
415	52040	INFORMATION TECHNOLOGY					\$ 550.00	
416	52050	MINOR EQUIPMENT	\$ 1,542.28	\$ 690.20	\$ 134.99	\$ 500.00	\$ 500.00	
417	52110	ENERGY & UTILITIES	\$ 6,031.54	\$ 6,926.52	\$ 7,374.81	\$ 7,000.00	\$ 7,000.00	
418	52150	COMMUNICATIONS	\$ -	\$ -	\$ -	\$ 500.00	\$ 500.00	
419	52190	PROFESSIONAL SERVICES	\$ 164.00	\$ -	\$ -	\$ 500.00	\$ 500.00	
420	52230	OFFICE SUPPLIES	\$ 422.03	\$ 436.64	\$ 515.81	\$ 500.00	\$ 500.00	
421	52997	ANIMAL CARE & DISPOSAL	\$ 11,114.49	\$ 7,520.45	\$ 9,884.72	\$ 15,000.00	\$ 15,000.00	
422	* TOT/ 12292		\$ 35,031.71	\$ 30,172.95	\$ 36,620.79	\$ 45,845.00	\$ 46,704.00	
423	12293	CIVIL ENFORCEMENT						
424	51010	DEPT HEAD SALARY & WAGES	\$ 2,499.96	\$ 2,499.96	\$ 2,499.96	\$ 2,500.00	\$ 2,500.00	
425	51012	CLERK/ASST SAL & WAGES	\$ -	\$ 385.98	\$ -	\$ -	\$ -	
426	52190	PROFESSIONAL SERVICES	\$ 9,055.00	\$ 8,955.00	\$ 9,967.50	\$ 10,000.00	\$ 10,000.00	
427	52230	OFFICE SUPPLIES	\$ 112.99	\$ 499.37	\$ 488.71	\$ 500.00	\$ 100.00	
428	* TOT/ 12293		\$ 11,667.95	\$ 12,340.31	\$ 12,956.17	\$ 13,000.00	\$ 12,600.00	
429	12294	FORESTRY						
430	52030	REPAIRS & MAINTENANCE	\$ 3,659.93	\$ 1,897.65	\$ 2,337.53	\$ 3,500.00	\$ 3,500.00	
431	52050	MINOR EQUIPMENT	\$ 1,325.09	\$ -	\$ 1,292.90	\$ 2,100.00	\$ 2,100.00	
432	52150	COMMUNICATIONS	\$ -	\$ -	\$ 61.20	\$ 200.00	\$ 200.00	
433	52170	PROFESSIONAL DEV & TRAVEL	\$ 137.35	\$ 120.00	\$ -	\$ 100.00	\$ -	
434	52190	PROFESSIONAL SERVICES	\$ 1,204.99	\$ -	\$ -	\$ 2,500.00	\$ 2,500.00	
435	52230	SUPPLIES	\$ 583.58	\$ 92.97	\$ 290.15	\$ 1,000.00	\$ 1,100.00	
436	57090	CLOTH/UNIFORM ALLOWANCE	\$ 1,200.00	\$ 1,200.00	\$ -	\$ -	\$ -	
437	* TOT/ 12294		\$ 8,110.94	\$ 3,310.62	\$ 3,981.78	\$ 9,400.00	\$ 9,400.00	
438	13999	REGIONAL SCHOOL ASSESSMENTS						
439	56500	MONT VOC TEC SCH ASSESS	\$ 598,963.00	\$ 674,258.00	\$ 666,754.00	\$ 699,447.00	\$ 766,225.00	
440	* TOT/ 13999		\$ 598,963.00	\$ 674,258.00	\$ 666,754.00	\$ 699,447.00	\$ 766,225.00	

Line #	ORG/ OBJ	DEPARTMENT	2008 EXPENDED	2009 EXPENDED	2010 EXPENDED	2011 BUDGETED	2012 MAYOR	2012 COUNCIL
441	14410	SURVEY						
442	51010	DEPT HEAD SALARY & WAGES	\$ 79,335.13	\$ 52,400.97	\$ 42,998.16	\$ 43,668.00	\$ 43,688.00	
443	51011	ASSISTANT SALARY & WAGES	\$ 31,864.45	\$ 31,356.36	\$ 30,729.31	\$ 31,865.00	\$ 31,865.00	
444	51013	GIS / AUTOCAD TECHNICIAN	\$ 45,172.84	\$ 45,140.70	\$ 44,924.46	\$ 45,173.00	\$ 45,173.00	
445	51020	ENGINEERS SALARY & WAGES	\$ 44,594.46	\$ 43,804.79	\$ 10,995.18	\$ 22,298.00	\$ -	
446	51551	TERMINATION LEAVE	\$ -	\$ -	\$ 59,069.10			
447	51030	OVERTIME	\$ -	\$ 1,475.19	\$ 580.10	\$ 1,000.00	\$ 500.00	
448	51460	LONGEVITY	\$ 1,590.00	\$ 1,480.00	\$ 1,920.00	\$ 780.00	\$ 330.00	
449	52030	REPAIRS & MAINTENANCE	\$ 445.30	\$ 648.98	\$ -	\$ 750.00	\$ 750.00	
450	52050	MINOR EQUIPMENT	\$ 2,106.33	\$ -	\$ -	\$ 6,500.00	\$ 2,000.00	
451	52150	COMMUNICATIONS	\$ 469.44	\$ 478.53	\$ 509.05	\$ 1,000.00	\$ 400.00	
452	52151	TELECOMMUNICATIONS					\$ 900.00	
453	52170	PROFESSIONAL DEV & TRAVEL	\$ 60.00	\$ 671.75	\$ 453.30	\$ 750.00	\$ 1,250.00	
454	52190	PROFESSIONAL SERVICES	\$ 11,606.38	\$ 5,944.53	\$ 10,993.97	\$ 15,000.00	\$ 35,600.00	
455	52230	OFFICE SUPPLIES	\$ 2,348.56	\$ 1,456.36	\$ 3,234.36	\$ 4,000.00	\$ 3,500.00	
456	52240	VEHICLE SUPPLIES	\$ 39.00	\$ 998.38	\$ 46.76	\$ 500.00	\$ 500.00	
457	57090	CLOTH/UNIFORM ALLOWANCE	\$ 350.00	\$ 350.00	\$ 350.00	\$ 350.00	\$ -	
458	58100	LAND ACQUISITION			\$ 4,860.00			
459	* TOT/ 14410		\$ 219,981.89	\$ 186,206.54	\$ 211,663.75	\$ 173,634.00	\$ 166,456.00	
460	14420	HIGHWAY						
461	52030	REPAIRS & MAINTENANCE	\$ 60,368.62	\$ 76,662.93	\$ 66,305.66	\$ 75,000.00	\$ 10,000.00	
462	52032	TRAFFIC MAINTENANCE	\$ 7,596.51	\$ 7,944.07	\$ 17,296.09	\$ 40,000.00	\$ 40,000.00	
463	52033	PARKING MAINTENANCE	\$ 20,550.92	\$ 26,271.88	\$ 13,990.97	\$ 20,000.00	\$ 20,000.00	
464	52034	CRUSHER MAINTENANCE	\$ 5,950.00	\$ 912.00	\$ 890.48	\$ 2,000.00	\$ 2,000.00	
465	52040	INFORMATION TECHNOLOGY					\$ 1,000.00	
466	52050	MINOR EQUIPMENT	\$ 3,896.94	\$ 3,651.94	\$ 8,112.13	\$ 10,000.00	\$ 10,000.00	
467	52070	EQUIPMENT RENTAL	\$ 900.00	\$ -	\$ -	\$ 1,000.00	\$ 1,000.00	
468	52110	ENERGY & UTILITIES	\$ 48.01	\$ 48.21	\$ 48.12	\$ 100.00	\$ 100.00	
469	52120	STREET LIGHTING	\$ 124,050.50	\$ 130,340.40	\$ 134,681.44	\$ 137,000.00	\$ 140,000.00	
470	52150	COMMUNICATIONS	\$ 4,145.22	\$ 3,056.41	\$ 2,145.55	\$ 3,500.00	\$ 500.00	
471	52151	TELECOMMUNICATIONS					\$ 3,000.00	
472	52170	PROFESSIONAL DEV & TRAVEL	\$ 790.00	\$ 400.00	\$ 660.00	\$ 1,000.00	\$ 1,000.00	
473	52190	PROFESSIONAL SERVICES	\$ 1,030.67	\$ 757.68	\$ 1,637.04	\$ 1,000.00	\$ 1,000.00	
474	52210	SNOW & ICE	\$ 624,090.01	\$ 583,821.91	\$ 485,758.81	\$ 225,000.00	\$ 250,000.00	
475	52230	OFFICE SUPPLIES	\$ 1,145.28	\$ 425.70	\$ 1,370.49	\$ 1,000.00	\$ 1,000.00	
476	52240	VEHICLE SUPPLIES	\$ 9,289.04	\$ 13,429.87	\$ 3,153.81	\$ 10,000.00	\$ 80,000.00	
477	52241	CRACK SEALING STREETS	\$ -	\$ -	\$ -	\$ -	\$ -	
478	5E+05	ROAD MAINTENANCE	\$ -	\$ 16,593.47	\$ 21,706.57	\$ 67,000.00	\$ 70,000.00	
479	52997	DRAIN ACCOUNT	\$ 31,260.33	\$ 35,120.77	\$ 21,721.47	\$ -	\$ -	
480	55123	NEW EQUIPMENT	\$ -	\$ -	\$ -	\$ -	\$ -	
481	57090	CLOTH/UNIFORM ALLOWANCE	\$ 7,400.00	\$ 6,900.00	\$ -	\$ -	\$ -	
482	58600	SIDEWALK CONSTRUCTION	\$ 111.64	\$ 3,389.83	\$ -	\$ -	\$ -	
483	58601	GUARD RAILS	\$ -	\$ -	\$ -	\$ -	\$ -	
484	58603	UPGRADE UNACCEPTED STREETS	\$ -	\$ -	\$ -	\$ -	\$ -	

Line #	ORG/ OBJ	DEPARTMENT	2008 EXPENDED	2009 EXPENDED	2010 EXPENDED	2011 BUDGETED	2012 MAYOR	2012 COUNCIL
485	* TOT/ 14420		\$ 902,623.69	\$ 909,727.07	\$ 779,478.63	\$ 593,600.00	\$ 630,600.00	
486	14421	PUBLIC WORKS						
487	51010	DEPT HEAD SALARY & WAGES	\$ 60,292.13	\$ 40,153.83	\$ 39,846.07	\$ 40,154.00	\$ 40,154.00	
488	51012	CLERK/ASST SAL & WAGES	\$ 36,198.61	\$ 35,557.60	\$ 17,486.49	\$ 18,100.00	\$ 18,100.00	
489	51014	MAINTENANCE CREW SAL&WGS	\$ 687,889.68	\$ 666,317.73	\$ 616,974.98	\$ 641,078.00	\$ 646,926.00	
490	51030	OVERTIME	\$ 40,814.52	\$ 38,203.73	\$ 16,331.64	\$ 38,000.00	\$ 38,000.00	
491	51031	WEEK-END STANDBY	\$ 32,840.00	\$ 32,920.00	\$ 17,710.00	\$ 17,080.00	\$ 17,140.00	
492	51102	WORKING OUT OF GRADE	\$ 3,291.55	\$ 4,339.47	\$ 2,506.29	\$ 5,000.00	\$ 5,000.00	
493	51104	MECHANIC / WELDER RATING	\$ 2,098.00	\$ 2,088.00	\$ 2,088.00	\$ 2,120.00	\$ 2,080.00	
494	51105	SICK LEAVE INCENTIVE	\$ 2,129.44	\$ 1,940.32	\$ 1,270.28	\$ 2,000.00	\$ 2,000.00	
495	51460	LONGEVITY	\$ 9,960.00	\$ 10,210.00	\$ 10,200.00	\$ 9,580.00	\$ 9,460.00	
496	51551	TERMINATION LEAVE	\$ 902.40	\$ 22,522.22	\$ 13,426.98	\$ -	\$ -	
497	52040	INFORMATION TECHNOLOGY					\$ 500.00	
498	51100	SHIFT DIFFERENTIAL			\$ 34.51		\$ 1,000.00	
499	52150	COMMUNICATIONS	\$ 634.37	\$ 479.69	\$ 529.63	\$ 1,000.00	\$ 500.00	
500	52151	TELECOMMUNICATIONS					\$ 500.00	
501	52170	PROFESSIONAL DEV & TRAVEL	\$ 226.25	\$ 246.25	\$ 236.25	\$ 250.00	\$ 250.00	
502	52190	PROFESSIONAL SERVICES	\$ 680.94	\$ 707.50	\$ 526.58	\$ 1,000.00	\$ 1,000.00	
503	52230	OFFICE SUPPLIES	\$ 1,052.88	\$ 417.45	\$ 1,076.00	\$ 1,000.00	\$ 1,000.00	
504	57090	CLOTH/UNIFORM ALLOWANCE	\$ 350.00	\$ 350.00	\$ 9,200.00	\$ 9,700.00	\$ 9,700.00	
505	* TOT/ 14421		\$ 879,360.77	\$ 856,453.79	\$ 749,443.70	\$ 786,062.00	\$ 793,310.00	
506	14429	MUNICIPAL GARAGE						
507	52030	REPAIRS & MAINTENANCE	\$ 26,387.78	\$ 26,521.02	\$ 30,690.27	\$ 30,000.00	\$ 30,000.00	
508	52040	INFORMATION TECHNOLOGY					\$ 500.00	
509	52050	MINOR EQUIPMENT	\$ 5,617.61	\$ 3,159.22	\$ 12,859.93	\$ 5,000.00	\$ 5,000.00	
510	52110	ENERGY & UTILITIES	\$ 41,774.79	\$ 43,643.01	\$ 29,425.24	\$ 50,000.00	\$ 45,000.00	
511	52150	COMMUNICATIONS	\$ 537.59	\$ 646.30	\$ 602.90	\$ 650.00	\$ 500.00	
512	52151	TELECOMMUNICATIONS					\$ 500.00	
513	52170	PROFESSIONAL DEV & TRAVEL	\$ 1,736.00	\$ 2,076.80	\$ 1,312.00	\$ 1,000.00	\$ 1,000.00	
514	52190	PROFESSIONAL SERVICES	\$ 8,212.78	\$ 9,520.50	\$ 6,116.20	\$ 8,500.00	\$ 8,500.00	
515	52240	VEHICLE SUPPLIES	\$ 240,327.64	\$ 164,808.37	\$ 143,658.43	\$ 185,000.00	\$ 185,000.00	
516	55163	BUILDING REHAB	\$ 9,374.47	\$ 5,981.14	\$ 8,042.65	\$ 10,000.00	\$ 10,000.00	
517	57090	CLOTH/UNIFORM ALLOWANCE	\$ 2,650.00	\$ 2,650.00	\$ -	\$ -	\$ -	
518	* TOT/ 14429		\$ 336,618.66	\$ 259,006.36	\$ 232,707.62	\$ 290,150.00	\$ 286,000.00	
519								
520	14482	AIRPORT						
521	52030	REPAIRS & MAINTENANCE	\$ 5,763.66	\$ 1,463.96	\$ 1,868.56	\$ 3,750.00	\$ 3,750.00	
522	52050	MINOR EQUIPMENT	\$ 9.85	\$ 150.00	\$ 23.69	\$ 200.00	\$ 200.00	
523	52110	ENERGY & UTILITIES	\$ 5,953.91	\$ 6,758.23	\$ 5,533.99	\$ 6,000.00	\$ 6,000.00	
524	52150	COMMUNICATIONS	\$ 1,749.99	\$ 694.87	\$ 254.35	\$ 800.00	\$ 200.00	
525	52170	TELECOMMUNICATIONS					\$ 600.00	
526	52191	PROFESSIONAL SERVICES	\$ 2,155.61	\$ 282.00	\$ 964.80	\$ 1,500.00	\$ 1,500.00	
527	52230	OFFICE SUPPLIES	\$ 43.95	\$ 42.19	\$ 29.99	\$ 50.00	\$ 50.00	
528	52240	VEHICLE SUPPLIES	\$ 1,411.42	\$ 979.97	\$ 797.58	\$ 1,200.00	\$ 1,200.00	



Line #	ORG/	DEPARTMENT	2008	2009	2010	2011	2012	2012
	OBJ		EXPENDED	EXPENDED	EXPENDED	BUDGETED	MAYOR	COUNCIL
529	* TOT/ 14482		\$ 17,088.39	\$ 10,371.22	\$ 9,472.96	\$ 13,500.00	\$ 13,500.00	
530	14490 CEMETERY							
531	52030 REPAIRS & MAINTENANCE		\$ 4,513.66	\$ 1,869.59	\$ 4,975.64	\$ 5,500.00	\$ 5,500.00	
532	52050 MINOR EQUIPMENT		\$ -	\$ 179.70	\$ 58.60	\$ 2,000.00	\$ 2,000.00	
533	52110 ENERGY & UTILITIES		\$ 714.14	\$ 1,407.69	\$ 2,264.34	\$ 2,500.00	\$ 2,500.00	
534	52150 COMMUNICATIONS		\$ 146.50	\$ -	\$ -	\$ 200.00	\$ 200.00	
535	52230 OFFICE SUPPLIES		\$ 317.75	\$ 199.84	\$ -	\$ 400.00	\$ 400.00	
536	57090 CLOTH/UNIFORM ALLOWANCE		\$ 1,000.00	\$ 1,000.00	\$ -	\$ -	\$ -	
537	* TOT/ 14490		\$ 6,692.05	\$ 4,656.82	\$ 7,298.58	\$ 10,600.00	\$ 10,600.00	
538	15512 HEALTH							
539	51010 DEPT HEAD SALARY & WAGES		\$ 68,636.77	\$ 70,269.03	\$ 34,865.53	\$ 35,135.00	\$ 35,135.00	
540	51011 P/T AST SANI INSPE SAL&WG		\$ 30,397.30	\$ 30,233.19	\$ 30,141.56	\$ 30,233.00	\$ 41,169.00	
541	51012 CLERK/ASST SAL & WAGES		\$ 35,130.60	\$ 34,570.35	\$ 33,940.97	\$ 35,131.00	\$ 35,131.00	
542	51013 P/T CLERK/ASST SALARY & WAGES		\$ 17,826.13	\$ 18,362.31	\$ 17,331.17	\$ 17,225.00	\$ -	
543	51014 BOARD & COMM SAL & WAGES		\$ 3,331.96	\$ 3,498.36	\$ 3,498.37	\$ 3,500.00	\$ 3,500.00	
544	51030 OVERTIME		\$ 2,068.94	\$ 1,602.92	\$ 364.91	\$ 1,000.00	\$ 1,000.00	
545	51460 LONGEVITY		\$ 540.00	\$ 400.00	\$ 735.00	\$ 945.00	\$ 895.00	
546	52030 REPAIRS & MAINTENANCE		\$ 1,158.15	\$ 2,292.83	\$ 587.90	\$ 500.00	\$ 500.00	
547	52050 MINOR EQUIPMENT		\$ -	\$ -	\$ -	\$ 1,000.00	\$ 1,000.00	
548	52150 COMMUNICATIONS		\$ 5,073.97	\$ 3,699.59	\$ 4,197.04	\$ 4,000.00	\$ 300.00	
549	52151 TELECOMMUNICATIONS						\$ 4,000.00	
550	52170 PROFESSIONAL DEV & TRAVEL		\$ 958.55	\$ 1,600.17	\$ 1,046.00	\$ 1,500.00	\$ 1,500.00	
551	52190 PROFESSIONAL SERVICES		\$ 1,962.36	\$ 2,099.34	\$ 1,901.00	\$ 7,000.00	\$ 7,000.00	
552	52230 OFFICE SUPPLIES		\$ 2,704.00	\$ 2,035.86	\$ 4,642.07	\$ 4,000.00	\$ 4,000.00	
553	52240 VEHICLE SUPPLIES						\$ 1,000.00	
554	54100 NURSING SERVICES		\$ 14,000.00	\$ 14,000.00	\$ 14,000.00	\$ 16,000.00	\$ 16,500.00	
555	55371 MUNICIPAL DUMPSTER COLLECTION		\$ 21,951.13	\$ 20,811.01	\$ 18,906.03	\$ 20,000.00	\$ 20,000.00	
556	57090 CLOTH/UNIFORM ALLOWANCE		\$ 700.00	\$ 700.00	\$ 700.00	\$ 700.00	\$ 700.00	
557	* TOT/ 15512		\$ 206,439.86	\$ 206,174.96	\$ 166,857.55	\$ 177,869.00	\$ 173,330.00	
558	15541 COUNCIL ON AGING							
559	51010 DEPT HEAD SALARY & WAGES		\$ 49,062.38	\$ 50,192.39	\$ 49,807.76	\$ 50,193.00	\$ 50,193.00	
560	51012 CLERKS/DISPATCHER SAL&WAG		\$ 31,864.45	\$ 31,300.26	\$ 30,785.41	\$ 31,865.00	\$ 31,865.00	
561	51013 VAN DRIVER SAL & WAGES		\$ 31,591.44	\$ 31,591.44	\$ 31,591.44	\$ 31,592.00	\$ 31,592.00	
562	51016 CUSTODIAN SALARY & WAGES		\$ 35,191.67	\$ 34,568.55	\$ 34,000.09	\$ 35,192.00	\$ 35,192.00	
563	51023 ALT VAN DRIVER SALARY & WAGES		\$ 1,757.03	\$ 3,945.62	\$ 1,880.33	\$ 3,000.00	\$ 4,000.00	
564	51030 OVERTIME		\$ 1,113.75	\$ 526.13	\$ -	\$ 600.00	\$ 600.00	
565	51460 LONGEVITY		\$ 2,130.00	\$ 1,970.00	\$ 2,490.00	\$ 2,610.00	\$ 2,740.00	
566	52030 REPAIRS & MAINTENANCE		\$ 2,580.08	\$ 4,538.98	\$ 1,915.23	\$ 2,500.00	\$ 2,500.00	
567	52040 INFORMATION TECHNOLOGY						\$ 50.00	
568	52050 MINOR EQUIPMENT		\$ -	\$ -	\$ -	\$ 500.00	\$ 500.00	
569	52110 ENERGY & UTILITIES		\$ 22,316.99	\$ 15,733.41	\$ 4,187.44	\$ 7,000.00	\$ 8,000.00	
570	52150 COMMUNICATIONS		\$ -	\$ -	\$ -	\$ 200.00	\$ 200.00	
571	52230 OFFICE SUPPLIES		\$ 239.47	\$ 595.57	\$ 47.38	\$ 200.00	\$ 200.00	
572	57090 CLOTH/UNIFORM ALLOWANCE		\$ 350.00	\$ 350.00	\$ 350.00	\$ 350.00	\$ 350.00	

Line #	ORG/ OBJ	DEPARTMENT	2008 EXPENDED	2009 EXPENDED	2010 EXPENDED	2011 BUDGETED	2012 MAYOR	2012 COUNCIL
573	57800	BUILDING REPAIRS	\$ 10,813.11	\$ -	\$ -	\$ 4,000.00	\$ 4,000.00	
574	* TOT/ 15541		\$ 189,010.37	\$ 175,312.35	\$ 157,055.08	\$ 169,802.00	\$ 171,982.00	
575								
576	15542 YOUTH COMMISSION							
577	52230	OFFICE SUPPLIES	\$ -	\$ -	\$ -	\$ 100.00	\$ 100.00	
578	52995	YOUTH ACTIVITIES	\$ -	\$ 200.00	\$ -	\$ 200.00	\$ 200.00	
579	* TOT/ 15542		\$ -	\$ 200.00	\$ -	\$ 300.00	\$ 300.00	
580								
581	15543 VETERANS							
582	51010	DEPT HEAD SALARY & WAGES	\$ 49,275.65	\$ 50,192.39	\$ 49,807.77	\$ 50,193.00	\$ 50,193.00	
583	51460	LONGEVITY	\$ 480.00	\$ 310.00	\$ 540.00	\$ 570.00	\$ 600.00	
584	52050	MINOR EQUIPMENT	\$ -	\$ 624.07	\$ -	\$ 250.00	\$ -	
585	52170	PROFESSIONAL DEV & TRAVEL	\$ -	\$ 35.00	\$ 49.00	\$ 100.00	\$ 135.00	
586	52230	OFFICE SUPPLIES	\$ 893.00	\$ 764.99	\$ 1,116.43	\$ 1,500.00	\$ 1,500.00	
587	57100	VETERANS BENEFITS	\$ 338,461.52	\$ 523,994.29	\$ 578,574.07	\$ 650,000.00	\$ 660,000.00	
588	* TOT/ 15543		\$ 389,110.17	\$ 575,920.74	\$ 630,087.27	\$ 702,613.00	\$ 712,428.00	
589								
590	15549 DISABILITIES COMMISSION							
591	52170	PROFESSIONAL DEV & TRAVEL	\$ -	\$ -	\$ -	\$ 250.00	\$ 250.00	
592	52230	OFFICE SUPPLIES	\$ -	\$ -	\$ -	\$ 50.00	\$ 50.00	
593	* TOT/ 15549		\$ -	\$ -	\$ -	\$ 300.00	\$ 300.00	
594								
595	16610 LIBRARY							
596	51010	DEPT HEAD SALARY & WAGES	\$ 63,475.74	\$ 65,250.00	\$ 64,750.00	\$ 65,250.00	\$ 62,731.00	
597	51011	COOR ADLT/LIB SERV SAL&WG	\$ 36,890.80	\$ 36,890.76	\$ 36,608.12	\$ 36,891.00	\$ 42,000.00	
598	51012	TECH/PUB SERV LIB II SAL&	\$ 126,819.76	\$ 126,779.12	\$ 125,807.81	\$ 126,780.00	\$ 95,085.00	
599	51013	TECH/PUB SERV LIB III SAL & WA	\$ 34,160.50	\$ 33,603.75	\$ 33,364.05	\$ 33,604.00	\$ 100,812.00	
600	51014	COOR YTH/LIB SERV SAL&WGS	\$ 36,890.80	\$ 36,890.78	\$ 36,608.28	\$ 36,891.00	\$ 36,891.00	
601	51015	LIBRARIANS P/T SAL & WGS	\$ 61,556.88	\$ 44,553.20	\$ 20,000.00	\$ 35,000.00	\$ 21,369.00	
602	51016	CUSTODIAN SALARY & WAGES	\$ 34,401.39	\$ 34,401.36	\$ 34,137.74	\$ 34,402.00	\$ 34,402.00	
603	51030	OVERTIME	\$ 1,299.78	\$ 800.00	\$ -	\$ -	\$ -	
604	51460	LONGEVITY	\$ 4,380.00	\$ 2,495.00	\$ 5,010.00	\$ 5,325.00	\$ 4,545.00	
605	51551	TERMINATION LEAVE	\$ 345.35	\$ 1,796.03	\$ -	\$ -	\$ -	
606	52030	REPAIRS & MAINTENANCE	\$ 300.00	\$ -	\$ 12,576.09	\$ 1,300.00	\$ 5,000.00	
607	52040	INFORMATION TECHNOLOGY					\$ 10,000.00	
608	52110	ENERGY & UTILITIES	\$ 45,000.00	\$ 45,000.00	\$ 33,759.86	\$ 50,000.00	\$ 35,000.00	
609	52150	COMMUNICATIONS	\$ 2,617.11	\$ 2,896.37	\$ 3,145.25	\$ 3,000.00	\$ 1,560.00	
610	52151	TELECOMMUNICATIONS					\$ 2,700.00	
611	52190	PROFESSIONAL SERVICES	\$ 26,038.00	\$ 28,527.00	\$ 29,824.00	\$ 28,000.00	\$ 30,000.00	
612	52230	OFFICE SUPPLIES	\$ 2,000.00	\$ 2,000.00	\$ 2,669.93	\$ 2,875.00	\$ 3,200.00	
613	52231	LIBRARY SUPPLIES	\$ 3,053.04	\$ 2,500.00	\$ 4,271.51	\$ 3,500.00	\$ 5,000.00	
614	52270	BOOKS & PERIODICALS	\$ 95,813.39	\$ 90,334.63	\$ 89,694.36	\$ 72,000.00	\$ 66,810.00	
615	57500	GENERAL LIABILITY	\$ 9,121.46	\$ 10,540.00	\$ 10,734.00	\$ 11,000.00	\$ 11,000.00	
616	58205	LIBRARY CONSTRUCTION	\$ 150,000.00	\$ 136,692.21	\$ -	\$ -	\$ -	

Line #	ORG/ OBJ	DEPARTMENT	2008 EXPENDED	2009 EXPENDED	2010 EXPENDED	2011 BUDGETED	2012 MAYOR	2012 COUNCIL
617	* TOT/ 16610		\$ 734,164.00	\$ 701,950.21	\$ 542,961.00	\$ 545,818.00	\$ 568,105.00	
618								
619	16620	RECREATION						
620	55057	CELEBRATIONS&SPEC EVENTS	\$ 731.54	\$ -	\$ 304.01	\$ 1,000.00	\$ 1,000.00	
621	* TOT/ 16620		\$ 731.54	\$ -	\$ 304.01	\$ 1,000.00	\$ 1,000.00	
622								
623	16621	GREENWOOD MEMORIAL POOL						
624	51010	DEPT HEAD SALARY & WAGES	\$ 48,885.00	\$ 50,192.40	\$ 49,854.66	\$ 50,193.00	\$ 50,193.00	
625	51012	CLERK/ASST SAL & WAGES	\$ 31,864.44	\$ 12,031.39	\$ -	\$ -	\$ -	
626	51013	P/T LIFE GUARDS SAL&WGS	\$ 40,079.07	\$ 37,015.43	\$ 34,893.57	\$ 33,000.00	\$ 32,000.00	
627	51030	OVERTIME	\$ -	\$ 124.98	\$ -	\$ -	\$ -	
628	51460	LONGEVITY	\$ 1,785.00	\$ 670.00	\$ 1,005.00	\$ 1,050.00	\$ 1,095.00	
629	51551	TERMINATION LEAVE	\$ -	\$ 32,170.88	\$ -	\$ -	\$ -	
630	52030	REPAIRS & MAINTENANCE	\$ 10,586.50	\$ 8,938.87	\$ 7,937.34	\$ 10,000.00	\$ 6,000.00	
631	52110	ENERGY & UTILITIES	\$ 69,882.86	\$ 61,301.91	\$ 41,547.05	\$ 43,000.00	\$ 50,000.00	
632	52150	COMMUNICATIONS	\$ 693.66	\$ 733.08	\$ 344.57	\$ 800.00	\$ 800.00	
633	52230	OFFICE SUPPLIES	\$ 73.09	\$ 71.15	\$ -	\$ 400.00	\$ 400.00	
634	52231	POOL SUPPLIES	\$ 9,557.93	\$ 13,928.85	\$ 5,231.54	\$ 8,200.00	\$ 9,000.00	
635	* TOT/ 16621		\$ 213,407.55	\$ 217,178.94	\$ 140,813.73	\$ 146,643.00	\$ 149,488.00	
636	16625	MUNICIPAL GROUNDS						
637	51010	DEPT HEAD SALARY & WAGES	\$ 63,326.40	\$ 65,250.00	\$ 54,996.46	\$ 65,250.00	\$ 65,250.00	
638	51012	CLERK/ASST SAL & WAGES	\$ 31,864.45	\$ 21,242.96	\$ 15,384.68	\$ 15,593.00	\$ 21,244.00	
639	51013	MAINTENANCE CREW SAL&WGS	\$ 151,345.84	\$ 131,005.18	\$ 111,969.02	\$ 116,615.00	\$ 116,615.00	
640	51014	BOARD & COMM SAL & WAGES	\$ 2,700.00	\$ 2,700.00	\$ 2,700.00	\$ 2,700.00	\$ 2,700.00	
641	51030	OVERTIME	\$ 9,270.90	\$ 6,275.52	\$ 3,415.26	\$ 8,000.00	\$ 8,000.00	
642	51102	WORKING OUT OF GRADE	\$ 1,340.40	\$ 889.90	\$ 1,152.56	\$ 2,000.00	\$ 2,000.00	
643	51105	SICK LEAVE INCENTIVE	\$ 335.60	\$ 158.04	\$ -	\$ 1,500.00	\$ 1,500.00	
644	51460	LONGEVITY	\$ 3,300.00	\$ 2,170.00	\$ 2,250.00	\$ 2,370.00	\$ 2,615.00	
645	51551	TERMINATION LEAVE	\$ -	\$ 35,951.04	\$ 2,416.32	\$ -	\$ -	
646	52030	REPAIRS & MAINTENANCE	\$ 10,328.85	\$ 9,101.61	\$ 7,251.34	\$ 10,000.00	\$ 10,000.00	
647	52050	MINOR EQUIPMENT	\$ -	\$ 159.15	\$ -	\$ 2,000.00	\$ 2,000.00	
648	52150	COMMUNICATIONS	\$ 853.98	\$ 717.72	\$ 1,523.44	\$ 1,000.00	\$ 200.00	
649	52151	TELECOMMUNICATIONS					\$ 1,000.00	
650	52170	PROFESSIONAL DEV & TRAVEL			\$ 67.95			
651	52230	OFFICE SUPPLIES	\$ 291.82	\$ 589.20	\$ 357.29	\$ 1,000.00	\$ 1,000.00	
652	52240	VEHICLE SUPPLIES					\$ 3,000.00	
653	55120	NEW VEHICLE ACCOUNT		\$ 2,901.33				
654	57090	CLOTH/UNIFORM ALLOWANCE	\$ 350.00	\$ 350.00	\$ 2,050.00	\$ 2,050.00	\$ 2,050.00	
655	* TOT/ 16625		\$ 275,308.24	\$ 279,461.65	\$ 205,534.32	\$ 230,078.00	\$ 239,174.00	
656	16630	PARKS						
657	52030	REPAIRS & MAINTENANCE	\$ -	\$ 791.96	\$ 535.61	\$ 500.00	\$ 500.00	
658	52110	ENERGY & UTILITIES	\$ 1,214.22	\$ 1,405.66	\$ 2,085.78	\$ 2,200.00	\$ 2,200.00	
659	52150	COMMUNICATIONS	\$ -	\$ -	\$ -	\$ 300.00	\$ 300.00	
660	58150	PLAYGROUND IMPROVEMENTS	\$ 5,116.66	\$ 4,321.82	\$ 5,978.19	\$ 6,000.00	\$ 6,000.00	

Line #	ORG/ OBJ	DEPARTMENT	2008 EXPENDED	2009 EXPENDED	2010 EXPENDED	2011 BUDGETED	2012 MAYOR	2012 COUNCIL
661	* TOT/ 16630		\$ 6,330.88	\$ 6,519.44	\$ 8,599.58	\$ 9,000.00	\$ 9,000.00	
662								
663	16650	HISTORICAL COMMISSION						
664	52230	OFFICE SUPPLIES	\$ -	\$ -	\$ 300.00	\$ 200.00	\$ 200.00	
665	* TOT/ 16650		\$ -	\$ -	\$ 300.00	\$ 200.00	\$ 200.00	
666								
667	17710	DEBT SERVICE						
668	57600	PRINCIPAL - INSIDE DEBT	\$ 1,036,094.00	\$ 1,038,094.00	\$ 698,094.00	\$ 698,100.00	\$ 698,094.00	
669	57601	PRINCIPAL - OUTSIDE DEBT	\$ 787,805.00	\$ 786,763.00	\$ 778,200.00	\$ 762,000.00	\$ 765,500.00	
670	57610	INTEREST - INSIDE DEBT	\$ 116,736.00	\$ 88,555.75	\$ 64,666.50	\$ 45,500.00	\$ 44,782.00	
671	57611	INTEREST - OUTSIDE DEBT	\$ 360,908.75	\$ 323,761.52	\$ 292,002.65	\$ 229,000.00	\$ 227,415.00	
672	57621	INTEREST TEMPORARY LOANS	\$ 39,238.03	\$ 37,126.58	\$ 35,790.26	\$ 60,000.00	\$ 50,000.00	
673	* TOT/ 17710		\$ 2,340,781.78	\$ 2,274,300.85	\$ 1,868,753.41	\$ 1,794,600.00	\$ 1,785,791.00	
674	19910	CONTRIBUTORY RETIREMENT						
675	51011	EXECUTIVE SEC SAL & WAGES	\$ 42,958.23	\$ 45,663.73	\$ 47,922.00	\$ 51,569.00	\$ 53,753.00	
676	51014	BOARD & COMM SAL & WAGES	\$ 15,300.00	\$ 15,300.00	\$ 15,050.00	\$ 15,300.00	\$ 15,300.00	
677	51023	PART TIME SALARY & WAGES	\$ -	\$ -	\$ -	\$ -	\$ 7,500.00	
678	51460	LONGEVITY	\$ 330.00	\$ 160.00	\$ 390.00	\$ 420.00	\$ 450.00	
679	57070	CONTRIB RETIRE ASSESSMENT	\$ 2,361,526.00	\$ 2,432,310.00	\$ 2,473,828.00	\$ 2,517,859.00	\$ 2,571,175.00	
680	* TOT/ 19910		\$ 2,420,114.23	\$ 2,493,433.73	\$ 2,537,190.00	\$ 2,585,148.00	\$ 2,648,178.00	
681	19911	NON-CONTRIB RETIREMENT						
682	57188	SCHOOL PENSIONS	\$ 25,511.04	\$ 25,871.04	\$ 27,117.86	\$ 33,923.00	\$ 34,283.00	
683	57189	HIGHWAY PENSIONS	\$ 7,993.20	\$ 5,341.56	\$ -	\$ -	\$ -	
684	* TOT/ 19911		\$ 33,504.24	\$ 31,212.60	\$ 27,117.86	\$ 33,923.00	\$ 34,283.00	
685								
686	19914	EMPLOYEE BENEFITS						
687	52200	111F CLAIMS REVIEW	\$ 6,300.00	\$ 6,300.00	\$ 6,300.00	\$ 6,600.00	\$ 6,600.00	
688	57010	WORKER'S COMPENSATION	\$ 137,745.00	\$ 130,457.00	\$ 144,559.00	\$ 160,000.00	\$ 170,000.00	
689	57011	WORKER'S COMPENSATION-SCHOOL	\$ -	\$ -	\$ -	\$ -	\$ -	
690	57020	UNEMPLOYMENT COMPENSATION	\$ 680.00	\$ 755.00	\$ 780.00	\$ 1,000.00	\$ 1,000.00	
691	57021	UNEMPLOYMENT COMPENSATION	\$ 61,887.00	\$ 32,035.57	\$ 31,598.51	\$ 245,000.00	\$ 245,000.00	
692	57022	UNEMPLOYMENT COMPENSATION-SCHL	\$ 102,959.00	\$ 71,096.43	\$ 62,924.81	\$ -	\$ -	
693	57040	MEDICARE	\$ 99,471.47	\$ 83,869.45	\$ 99,761.48	\$ 335,000.00	\$ 335,000.00	
694	57041	MEDICARE-SCHOOL	\$ 196,986.69	\$ 225,860.28	\$ 220,901.22	\$ -	\$ -	
695	57051	LIFE INSURANCE	\$ 24,937.88	\$ 20,674.42	\$ 23,270.18	\$ 54,000.00	\$ 54,000.00	
696	57052	LIFE INSURANCE-SCHOOL	\$ 28,324.56	\$ 32,830.23	\$ 30,623.37	\$ -	\$ -	
697	57060	HEALTH/DENTAL INSURANCE	\$ 2,475,406.29	\$ 2,000,248.01	\$ 2,649,920.46	\$ 6,870,784.00	\$ 7,232,780.00	
698	57061	HEALTH/DENTAL INSURANCE-SCHOOL	\$ 3,132,180.18	\$ 3,241,666.84	\$ 3,674,757.15	\$ -	\$ -	
699	57062	CHAP 41 MEDICAL ALLOWANCE	\$ 28,573.70	\$ 25,788.62	\$ 44,210.45	\$ 30,000.00	\$ 30,000.00	
700	* TOT/ 19914		\$ 6,295,451.77	\$ 5,871,581.85	\$ 6,989,606.63	\$ 7,702,384.00	\$ 8,074,380.00	
701								
702	19945	INSURANCES						
703	57501	PROP & GEN LIABILITY INS	\$ 295,921.00	\$ 262,402.71	\$ 257,373.23	\$ 310,000.00	\$ 300,000.00	
704	57503	PUBLIC OFFIC LIABILITY	\$ 40,752.50	\$ 48,188.93	\$ 47,119.34	\$ 50,000.00	\$ 60,000.00	

Line #	ORG/ OBJ	DEPARTMENT	2008 EXPENDED	2009 EXPENDED	2010 EXPENDED	2011 BUDGETED	2012 MAYOR	2012 COUNCIL
705	57504	MOTOR VEHICLE FLOATER	\$ 75,921.10	\$ 75,068.71	\$ 67,548.69	\$ 80,000.00	\$ 80,000.00	
706	* TOT/ 19945		\$ 412,594.60	\$ 385,660.35	\$ 372,041.26	\$ 440,000.00	\$ 440,000.00	

707  
708  
709  
710  
711  
712  
713

714 19999 OTHER EXPENDITURES

715	59040	TRANSFER TO STABILIZATION	\$ 111,093.14	\$ -	\$ 160,031.46	\$ -	\$ 20,000.00	
716	59991	PARKING METER FEES TRANSF	\$ 6,336.50	\$ 1,133.62	\$ 1,024.06	\$ -	\$ -	
717		OTHER TRANSFERS	\$ 72,647.00	\$ -	\$ -	\$ -	\$ -	
718	59998	CABLE COMMISSION FEES TRANSFER	\$ 12,684.89	\$ 9,307.29	\$ 9,168.79	\$ -	\$ -	
719	* TOT/ 19999		\$ 202,761.53	\$ 10,440.91	\$ 170,224.31	\$ -	\$ 20,000.00	

720

721	<b>TOTAL GENERAL GOVERNMENT</b>		<b>\$23,753,128.24</b>	<b>\$23,051,484.75</b>	<b>\$23,297,524.33</b>	<b>\$24,478,247.00</b>	<b>\$25,324,367.00</b>	<b>\$ -</b>
-----	---------------------------------	--	------------------------	------------------------	------------------------	------------------------	------------------------	-------------

722  
723  
724  
725  
726  
727  
728  
729  
730  
731  
732  
733  
734  
735  
736  
737  
738  
739  
740  
741  
742  
743  
744  
745  
746  
747  
748

Line #	ORG/ OBJ	DEPARTMENT	2008 EXPENDED	2009 EXPENDED	2010 EXPENDED	2011 BUDGETED	2012 MAYOR	2012 COUNCIL
749								
750								
751	61440	SEWER						
752	51010	DEPT HEAD SALARY & WAGES	\$ 11,999.86	\$ 20,077.17	\$ 19,923.30	\$ 20,077.00	\$ 20,077.00	
753	51011	ENGINEER SALARY & WAGES	\$ 5,332.75	\$ 17,467.16	\$ 21,833.69	\$ 21,834.00	\$ 21,834.00	
754	51012	CLERK/ASST SAL & WAGES	\$ 30,902.76	\$ 31,300.25	\$ 21,075.16	\$ 35,298.00	\$ 35,298.00	
755	51013	PART TIME CLERK	\$ 15,270.88	\$ 15,544.22	\$ 15,288.74	\$ 15,825.00	\$ -	
756	51014	MAINTENANCE CREW-SAL&WGS	\$ 45,309.60	\$ 27,537.02	\$ 37,736.34	\$ 43,306.00	\$ 45,310.00	
757	51015	PW CLERK SALARY	\$ -	\$ -	\$ 8,743.24	\$ 9,050.00	\$ 9,050.00	
758	51020	ENGINEER SALARY	\$ -	\$ -	\$ 5,497.49	\$ 11,149.00	\$ -	
759	51030	OVERTIME	\$ 31.69	\$ 94.37	\$ 310.70	\$ 4,000.00	\$ 4,000.00	
760	51090	CLOTH/UNIFORM ALLOWANCE	\$ -	\$ -	\$ 700.00	\$ 700.00	\$ 700.00	
761	51102	WORKING OUT OF GRADE	\$ -	\$ -	\$ -	\$ 1,000.00	\$ 1,000.00	
762	51105	SICK LEAVE INCENTIVE	\$ -	\$ 86.80	\$ 546.48	\$ 100.00	\$ 100.00	
763	51460	LONGEVITY	\$ 1,215.00	\$ 1,260.00	\$ 885.00	\$ 960.00	\$ 820.00	
764	51551	TERMINATION LEAVE	\$ -	\$ 23,600.01	\$ -	\$ -	\$ -	
765	52030	REPAIRS & MAINTENANCE	\$ 25,600.40	\$ 6,450.00	\$ 412.97	\$ 1,000.00	\$ 500.00	
766	52031	REPAIRS TO MAINS	\$ 3,583.78	\$ 6,610.95	\$ 27,481.94	\$ 25,000.00	\$ 50,000.00	
767	52040	INFORMATION TECHNOLOGY						
768	52050	NEW EQUIPMENT	\$ 35,744.00	\$ 90,100.00	\$ 37,278.00	\$ -	\$ -	
769	52110	ENERGY & UTILITIES	\$ -	\$ -	\$ -	\$ -	\$ -	
770	52150	COMMUNICATIONS	\$ 790.77	\$ 595.45	\$ 799.30	\$ 1,000.00	\$ 60,000.00	
771	52151	TELECOMMUNICATIONS					\$ 2,000.00	
772	52170	PROFESSIONAL DEV & TRAVEL	\$ 140.00	\$ 40.00	\$ 105.00	\$ 750.00	\$ 750.00	
773	52190	PROFESSIONAL SERVICES	\$ 8,083.59	\$ 20,841.12	\$ 16,215.56	\$ 25,000.00	\$ 25,000.00	
774	52192	WPAT ADMINISTRATIVE FEES	\$ -	\$ -	\$ -	\$ -	\$ -	
775	52230	OFFICE SUPPLIES	\$ 14,437.57	\$ 7,614.77	\$ 9,747.49	\$ 10,000.00	\$ 10,000.00	
776	52231	CHEMICAL TREATMENT	\$ 59,363.00	\$ 39,221.48	\$ 41,919.00	\$ 25,000.00	\$ 25,000.00	
777	52240	VEHICLE SUPPLIES						
778	52360	AWWTP CONTRACT OPERATIONS	\$ 1,004,056.44	\$ 1,181,782.61	\$ 1,138,766.90	\$ 1,262,399.00	\$ 1,289,963.00	
779	52380	INDIRECT COSTS REIMBURSE	\$ 87,289.01	\$ 111,302.87	\$ -	\$ -	\$ 75,000.00	
780	55032	WWTF STUDY	\$ -	\$ -	\$ -	\$ -	\$ 75,000.00	
781	55034	NPDES REPORT / WWTF STUDY	\$ -	\$ -	\$ -	\$ -	\$ 75,000.00	
782	55123	COLD STORAGE BUILDING	\$ -	\$ -	\$ -	\$ -	\$ -	
783	55139	I & I REMOVAL	\$ 283,127.07	\$ 4,898.61	\$ 321,233.56	\$ 500,000.00	\$ 600,000.00	
784	56902	TAXES OTHER TOWNS	\$ -	\$ -	\$ -	\$ 300.00	\$ 300.00	
785	57090	CLOTH/UNIFORM ALLOWANCE	\$ 700.00	\$ 700.00	\$ -	\$ -	\$ -	
786	57601	PRINCIPAL - OUTSIDE DEBT	\$ 155,973.14	\$ 156,279.14	\$ 156,110.60	\$ 155,933.00	\$ 156,472.00	
787	57611	INTEREST - OUTSIDE DEBT	\$ 81,872.02	\$ 75,725.23	\$ 69,414.11	\$ 63,020.00	\$ 56,488.00	
788	65032	ENC COPPER OPTIMIZATION STUDY	\$ -	\$ -	\$ 10,924.66	\$ -	\$ -	
789	65034	ENC. FACILITY ASSESS. INVENTOR	\$ 13,227.00	\$ -	\$ -	\$ -	\$ -	
790	65123	ENCUMB COLD STORAGE BUILDING	\$ -	\$ -	\$ -	\$ -	\$ -	
791	65139	ENCUMB I & I REMOVAL	\$ 207,496.27	\$ -	\$ -	\$ -	\$ -	
792	* TOT/61440		\$ 2,091,546.60	\$ 1,839,129.23	\$ 1,962,949.23	\$ 2,232,701.00	\$ 2,639,662.00	







Line #	ORG/ OBJ	DEPARTMENT	2008 EXPENDED	2009 EXPENDED	2010 EXPENDED	2011 BUDGETED	2012 MAYOR	2012 COUNCIL
881								
882								
883	64433	LANDFILL CLOSURE EXPENSES						
884	51010	DEPT HEAD	\$ -	\$ -	\$ 17,432.76	\$ 17,568.00	\$ 17,568.00	
885	51012	LANDFILL SUPERVISOR SALARY	\$ 18,999.76	\$ 19,007.04	\$ 19,941.29	\$ 19,951.00	\$ 19,951.00	
886	52030	FINAL COVER MAINTENANCE	\$ 13,905.25	\$ 8,900.00	\$ 10,479.50	\$ 15,000.00	\$ 15,000.00	
887	52031	REPAIRS TO PUMPS		\$ 8,900.00		\$ 10,000.00	\$ 10,000.00	
888	52050	MINOR EQUIPMENT	\$ 205.75	\$ -	\$ -	\$ -	\$ -	
889	52110	ENERGY & UTILITIES	\$ 12,308.83	\$ 11,600.11	\$ 9,356.29	\$ 10,000.00	\$ 10,000.00	
890	52150	COMMUNICATIONS	\$ 375.57	\$ 1,269.27	\$ 1,138.36	\$ 1,400.00	\$ 1,400.00	
891	52190	PROFESSIONAL SERVICES	\$ 70,879.50	\$ 76,121.36	\$ 46,546.55	\$ 40,000.00	\$ 40,000.00	
892	52270	AIR POLLUTION CONTROL MAINTENA	\$ -	\$ -	\$ -	\$ 5,000.00	\$ 5,000.00	
893	52271	GROUNDWATER MONITORING	\$ 11,360.34	\$ 70.00	\$ 1,845.84	\$ 20,000.00	\$ 20,000.00	
894	52272	SULFUR CONTROL	\$ 38,070.79	\$ 13,075.87	\$ 25,378.52	\$ 12,000.00	\$ 12,000.00	
895	52380	INDIRECT COSTS REIMBURSE	\$ 6,620.53	\$ 8,890.44	\$ -	\$ -	\$ 3,000.00	
896	68160	ENCUMB	\$ -	\$ -	\$ -	\$ (153,919.00)	\$ (153,919.00)	
897	** TOT 640		\$ 172,726.32	\$ 147,834.09	\$ 132,119.11	\$ (3,000.00)	\$ -	
898	65430	SOLID WASTE EXPENSES						
899	51010	DEPT HEAD	\$ -	\$ -	\$ 17,432.26	\$ 17,568.00	\$ 17,568.00	
900	51012	TRANSFER STATN SUPER SALARY	\$ 20,901.92	\$ 20,894.64	\$ 19,941.28	\$ 19,951.00	\$ 19,951.00	
901	51013	ACCOUNT CLERK SALARY	\$ 12,252.82	\$ 15,544.22	\$ 15,288.29	\$ 15,825.00	\$ 31,650.00	
902	51018	TRANSFER STATN MONITOR SAL	\$ 13,373.89	\$ 13,242.53	\$ 13,461.45	\$ 15,200.00	\$ 15,200.00	
903	51030	OVERTIME	\$ 401.32	\$ 558.96	\$ 1,148.12	\$ 500.00	\$ 500.00	
904	51090	CLOTH/UNIFORM ALLOWANCE	\$ -	\$ -	\$ 700.00	\$ 700.00	\$ 700.00	
905	51460	LONGEVITY	\$ 165.00	\$ 180.00	\$ 195.00	\$ 195.00	\$ 640.00	
906	52030	REPAIRS & MAINTENANCE	\$ 987.44	\$ 1,459.62	\$ 4,821.97	\$ 10,000.00	\$ 30,000.00	
907	52050	MINOR EQUIPMENT	\$ 472.13	\$ 68.79	\$ 2,335.88	\$ 1,000.00	\$ 1,000.00	
908	52110	ENERGY & UTILITIES	\$ 1,718.77	\$ 222.30	\$ 145.46	\$ 7,000.00	\$ 7,000.00	
909	52150	COMMUNICATIONS	\$ 158.19	\$ (97.19)	\$ 250.00	\$ 500.00	\$ 500.00	
910	52170	PROFESSIONAL DEV & TRAVEL	\$ -	\$ -	\$ -	\$ 500.00	\$ 500.00	
911	52190	PROFESSIONAL SERVICES	\$ 7,925.69	\$ 7,303.10	\$ 6,528.16	\$ 20,000.00	\$ 20,000.00	
912	52230	OFFICE SUPPLIES	\$ 1,928.20	\$ -	\$ 1,312.13	\$ 500.00	\$ 500.00	
913	52232	TRASH BAGS	\$ -	\$ -	\$ 5,600.00	\$ 65,000.00	\$ 15,000.00	
914	52240	VEHICLE SUPPLIES	\$ 533.12	\$ 1,404.82	\$ 765.50	\$ 2,000.00	\$ 2,000.00	
915	52361	TRASH DISPOSAL	\$ 350,512.31	\$ 194,419.36	\$ 381,212.22	\$ 300,000.00	\$ 344,083.00	
916	52362	RECYCLING PROCESSING	\$ -	\$ -	\$ -	\$ 24,000.00	\$ 24,000.00	
917	52380	INDIRECT COSTS REIMBURSE	\$ 26,510.81	\$ 30,291.15	\$ -	\$ -	\$ 40,000.00	
918	55123	NEW EQUIPMENT	\$ -	\$ -	\$ -	\$ 140,000.00	\$ -	
919	55126	CURBSIDE RECYCLING	\$ 239,415.28	\$ 248,020.29	\$ 249,288.36	\$ 170,000.00	\$ 171,020.00	
920	55361	CURBSIDE RUBBISH COLLECT	\$ 434,533.52	\$ 449,307.60	\$ 452,452.80	\$ 452,453.00	\$ 387,310.00	
921	55363	CURBSIDE YARD WASTE COLLECTION	\$ 36,914.22	\$ 38,169.36	\$ 42,707.30	\$ 55,000.00	\$ 55,330.00	
922	55365	HOUSEHOLD HAZARDOUS WASTE	\$ 15,820.40	\$ 8,179.14	\$ 8,236.40	\$ 15,000.00	\$ 15,090.00	
923	57090	CLOTH/UNIFORM ALLOWANCE	\$ 350.00	\$ 700.00	\$ -	\$ -	\$ -	
924	57601	PRINCIPAL - OUTSIDE DEBT		\$ -	\$ -	\$ -	\$ 100,000.00	

Line #	ORG/ OBJ	DEPARTMENT	2008 EXPENDED	2009 EXPENDED	2010 EXPENDED	2011 BUDGETED	2012 MAYOR	2012 COUNCIL
925	57621	INTEREST - TEMPORARY LOANS	\$ -	\$ -	\$ -	\$ -	\$ 5,917.00	
926	* TOT/ 65430		\$ 1,164,875.03	\$ 1,029,868.69	\$ 1,223,822.58	\$ 1,332,892.00	\$ 1,305,459.00	

927

928

929

930	<b>ENTERPRISE ACCOUNT TOTALS</b>		<b>\$ 7,932,091.12</b>	<b>\$ 9,503,972.95</b>	<b>\$ 7,151,469.50</b>	<b>\$ 7,394,203.00</b>	<b>\$ 8,045,860.00</b>	
-----	----------------------------------	--	------------------------	------------------------	------------------------	------------------------	------------------------	--

931

932

933	13960	SCHOOL EXPENSES						
934	51000	SCHOOL EXPENSES	\$ 19,592,095.00	\$ 20,142,535.00	\$ 19,529,838.00	\$ 17,998,568.00	\$ 18,125,437.00	
935	68000	ENCUMBERED SCHOOL EXPENSES	\$ -	\$ -	\$ -	\$ -	\$ -	
936	51207	CROSSING GUARDS	\$ 60,000.00	\$ 59,302.25	\$ 60,000.00	\$ 60,000.00	\$ 60,000.00	
937	52800	REGUALR TRANSPORTATION	\$ 475,000.00	\$ 316,725.60	\$ 490,000.00	\$ 490,000.00	\$ 600,000.00	
938	63500	ENC. REGULAR TRANSPORTATION	\$ -	\$ -	\$ -	\$ -	\$ -	
939	55804	SPED TRANSPORTATION	\$ 875,000.00	\$ 534,466.87	\$ 950,000.00	\$ 880,000.00	\$ 710,000.00	
940	65804	ENC. SPED TRANSPORTATION	\$ -	\$ -	\$ -	\$ -	\$ -	
941	* TOT/ 13960		\$ 21,002,095.00	\$ 21,053,029.72	\$ 21,029,838.00	\$ 19,428,568.00	\$ 19,495,437.00	

942

943

Percent of FY11

944	<b>TOTAL GENERAL GOVERNMENT</b>		<b>\$ 23,753,128.24</b>	<b>\$ 23,051,484.75</b>	<b>\$ 23,297,524.33</b>	<b>\$ 24,478,247.00</b>	<b>\$ 25,324,367.00</b>	<b>103.46%</b>
945	<b>ENTERPRISE ACCOUNT TOTALS</b>		<b>\$ 7,932,091.12</b>	<b>\$ 9,503,972.95</b>	<b>\$ 7,151,469.50</b>	<b>\$ 7,394,203.00</b>	<b>\$ 8,045,860.00</b>	<b>108.81%</b>
946	<b>TOTAL SCHOOL EXPENSES</b>		<b>\$ 21,002,095.00</b>	<b>\$ 21,053,029.72</b>	<b>\$ 21,029,838.00</b>	<b>\$ 19,428,568.00</b>	<b>\$ 19,495,437.00</b>	<b>100.34%</b>

947

948	<b>CITY OF GARDNER TOTAL</b>		<b>\$ 52,687,314.36</b>	<b>\$ 53,608,487.42</b>	<b>\$ 51,478,831.83</b>	<b>\$ 51,301,018.00</b>	<b>\$ 52,865,664.00</b>	<b>103.05%</b>
-----	------------------------------	--	-------------------------	-------------------------	-------------------------	-------------------------	-------------------------	----------------

949

950

951

952

953

954

955

956

957

958

959

960