



Mayor's FY 2010 Budget

Mark Hawke, Mayor
Submitted June 1, 2009



CITY OF GARDNER - EXECUTIVE DEPARTMENT
Mark Hawke, Mayor

June 1, 2009

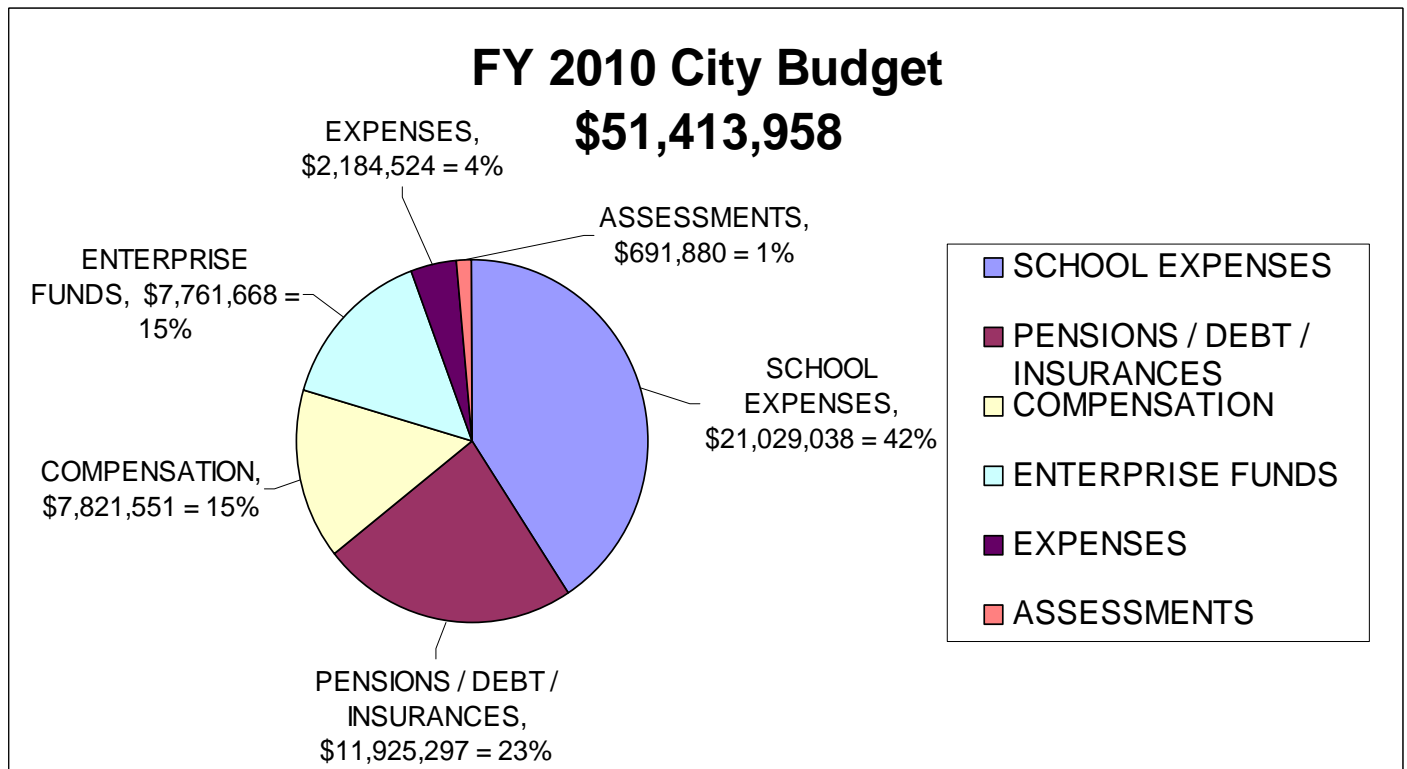
The Honorable Neil Janssens
Council President and
Gardner City Councilors
95 Pleasant Street
Gardner, MA 01440

President Janssens,

I hereby submit my Fiscal Year 2010 Operating Budget for the City of Gardner.

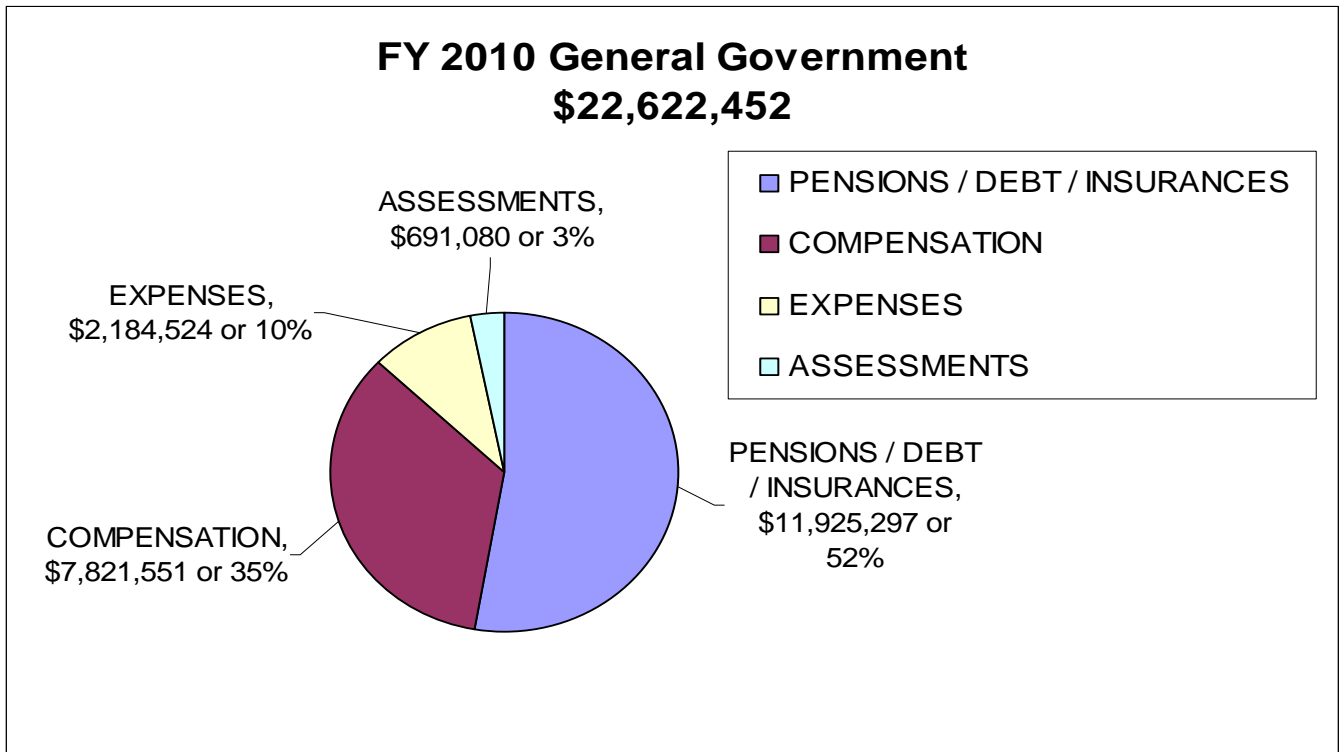
Fiscal Year 2010 Budget by functional area:

The Fiscal Year 2010 Budget totals \$51,413,958.



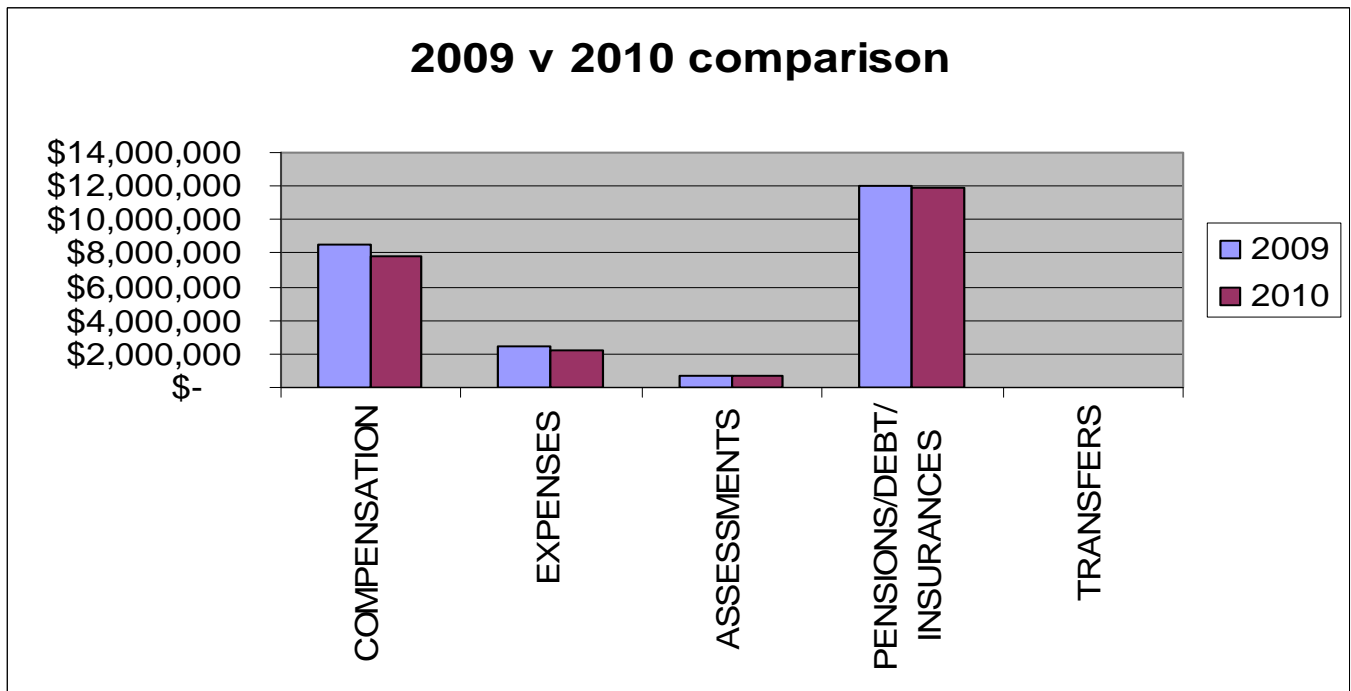
FY 2010 General Government by functional area

The Fiscal Year 2010 General Government budget totals \$22,622,452.



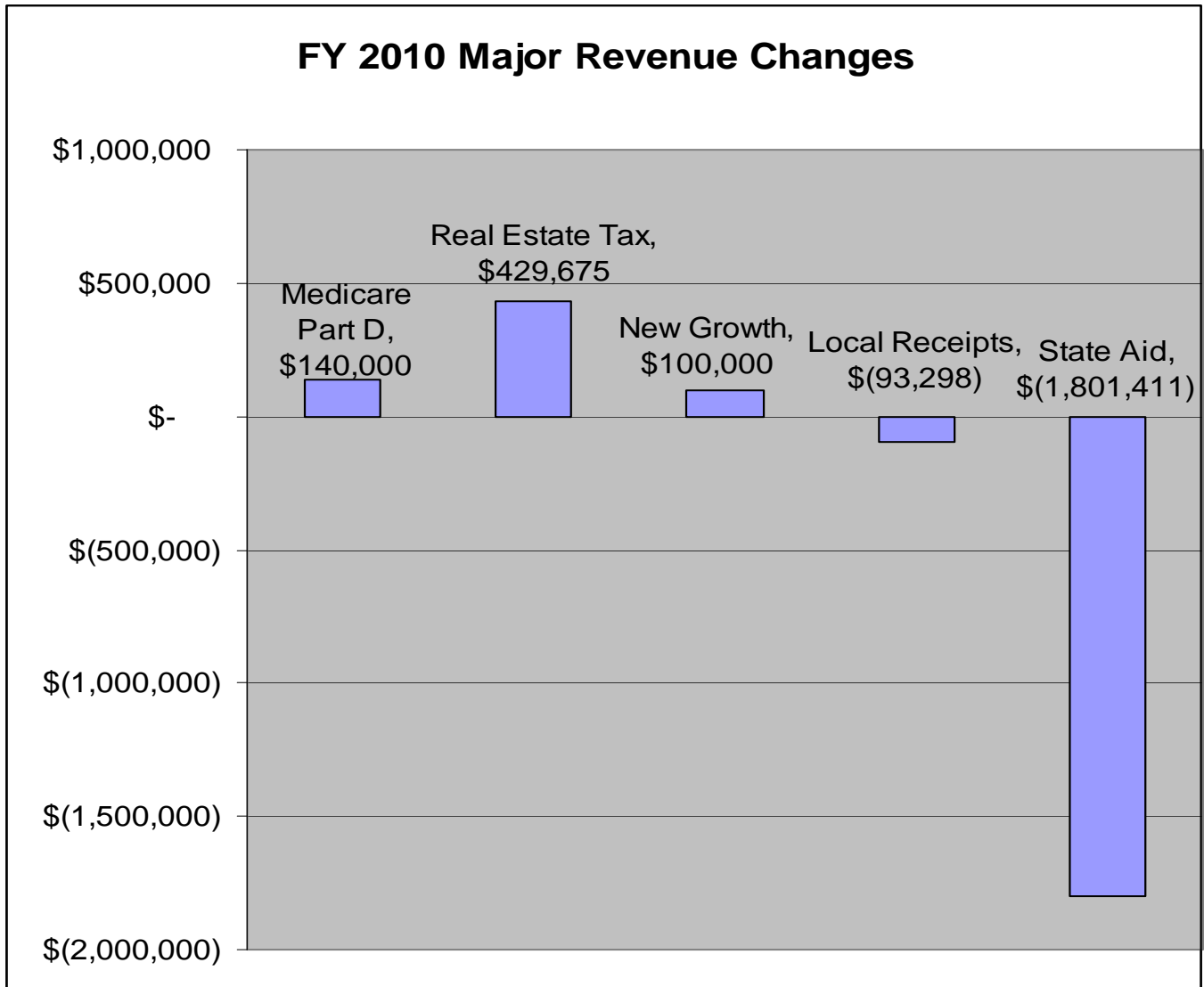
FY 2009 Comparison to FY 2010

The Fiscal Year 2009 General Government Budget total of \$22,622,452 represents a decrease of 4.4% over the Fiscal Year 2008 Budget total of \$23,664,385 (pre 9-C budget reductions).



Fiscal Year 2010 Major Changes – Revenue

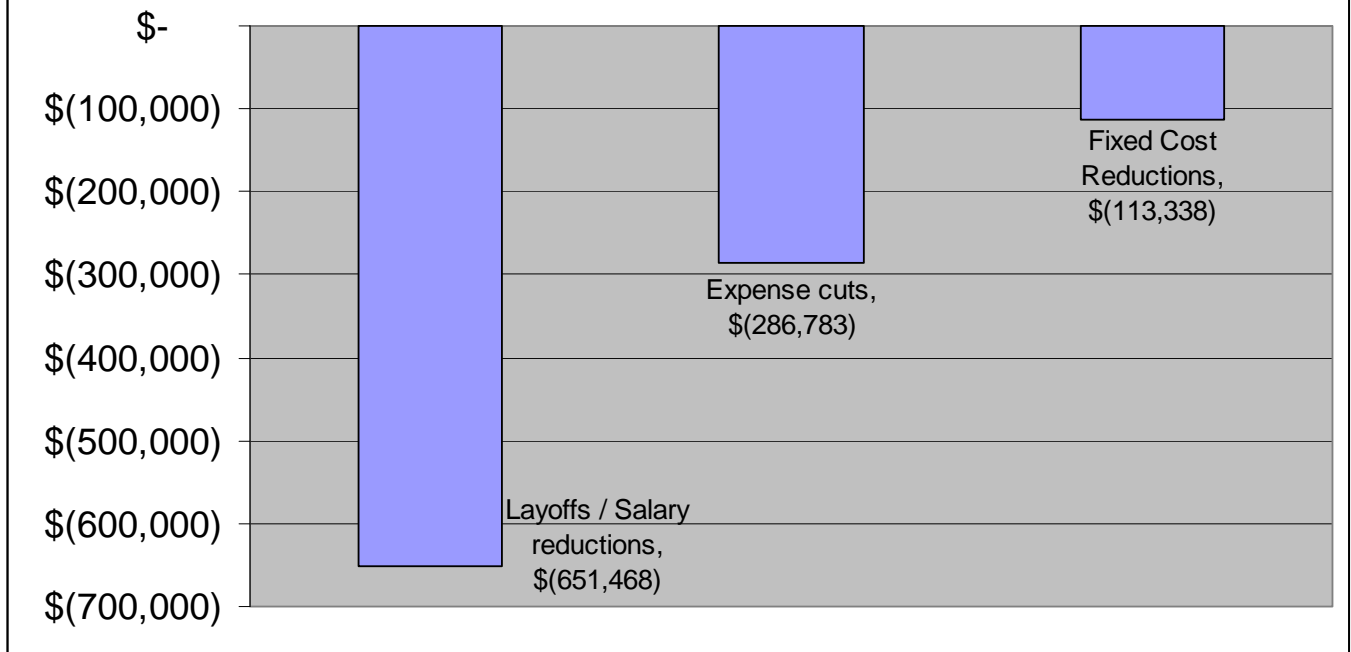
The major changes in revenue from FY09 to FY10 are the allocation of the Medicare Part D Subsidy of \$140,000 to the General Fund, the Real Estate Tax Levy increase of \$429,675, New Tax Growth estimated at \$100,000 (this is down from FY09 projections of \$150,000 and FY08 projections of \$200,000), a decrease of <\$93,298> in Local Receipts (due mainly to lower Excise Tax receipts) and a reduction in State –Aid of <\$1,801,411>.



Fiscal Year 2010 Major Changes – Expenditures

Major changes in FY 2010 budget expenditures include the reduction of compensation by \$651,468 (furloughs, layoffs and reduced hours), expense reductions of \$286,783 and fixed cost reductions of \$113,338.

FY 2010 Major Expense Changes



The draconian cut to local aid, a lower than normal new growth projection and dismal economic conditions across the country all contributed to a challenging FY2010 Budget for the City of Gardner.

In order to continue to provide quality service to the citizens of Gardner we must reorganize in order to become more efficient. It is my sincerest hope to work with the Council toward a central collections office overseen by a combined Treasurer/Collector. This change will provide for a more efficient processing of collection, streamlining of duties, cross-training of personnel and long-term savings for the City.

I will continue to pursue other organizational consolidations and efficiencies mentioned in the Financial Management Review conducted by the State Department of Revenue. The Review had many fine recommendations, most of which we have worked towards or already implemented.

Respectfully Submitted,

Mark Hawke
Mayor

ORG/ OBJ	DEPARTMENT	2006 EXPENDED	2007 EXPENDED	2008 EXPENDED	2009 CITY COUNCIL	2010 Mayor	2010 Council
11111	CITY COUNCIL						
51010	COUNCILORS SALARIES	\$ 51,750.00	\$ 51,750.00	\$ 57,499.80	\$ 68,876.00	\$ 74,501.00	\$ 71,636.00
51012	CLERK/ASST SAL & WAGES	\$ 3,499.96	\$ 3,416.63	\$ 5,000.00	\$ 5,000.00	\$ 5,000.00	\$ 5,000.00
52050	MINOR EQUIPMENT	\$ 718.98	\$ 483.24	\$ 449.85	\$ 500.00	\$ 500.00	\$ 500.00
52150	COMMUNICATIONS	\$ 6,876.01	\$ 10,771.20	\$ 7,373.28	\$ 13,000.00	\$ 13,000.00	\$ 8,000.00
52170	PROFESSIONAL DEV & TRAVEL	\$ -	\$ -	\$ -	\$ -	\$ -	\$ -
52230	OFFICE SUPPLIES	\$ 1,079.69	\$ 506.92	\$ 1,013.23	\$ 1,000.00	\$ 1,000.00	\$ 1,000.00
55004	TRI-CITY COUNCIL DINNER	\$ -	\$ -	\$ -	\$ -	\$ -	\$ -
55010	GOVERNMENT PICTURE	\$ -	\$ 855.71	\$ -	\$ 900.00	\$ -	\$ -
* TOTAL 11111		\$ 63,924.64	\$ 67,783.70	\$ 71,336.16	\$ 89,276.00	\$ 94,001.00	\$ 86,136.00
11121	MAYOR						
51010	MAYOR SALARY & WAGES	\$ 55,173.22	\$ 65,000.00	\$ 68,400.00	\$ 75,323.00	\$ 78,348.00	\$ 78,348.00
51011	ADMIN ASSISTANT SALARY & WAGES	\$ -	\$ -	\$ -	\$ -	\$ -	\$ -
51012	SECRETARY SALARY & WAGES	\$ 31,909.99	\$ 35,439.56	\$ 39,234.71	\$ 40,154.00	\$ 39,847.00	\$ 39,847.00
51023	TEMP SALARY & WAGES	\$ 2,500.00	\$ 3,216.77	\$ 1,563.61	\$ 2,500.00	\$ 2,000.00	\$ 1,500.00
51460	LONGEVITY	\$ 180.00	\$ 210.00	\$ 240.00	\$ -	\$ -	\$ -
51551	TERMINATION LEAVE	\$ -	\$ -	\$ 2,384.61	\$ -	\$ -	\$ -
52030	REPAIRS & MAINTENANCE	\$ 109.00	\$ 637.35	\$ 669.70	\$ 960.00	\$ 900.00	\$ 900.00
52050	MINOR EQUIPMENT	\$ 258.92	\$ -	\$ -	\$ 500.00	\$ 500.00	\$ -
52150	COMMUNICATIONS	\$ 602.14	\$ 583.20	\$ 505.96	\$ 2,000.00	\$ 1,900.00	\$ 1,900.00
52170	PROFESSIONAL DEV & TRAVEL	\$ 298.51	\$ 646.76	\$ 96.69	\$ 900.00	\$ 900.00	\$ 900.00
52190	PROFESSIONAL SERVICES	\$ -	\$ -	\$ 4,420.00	\$ 6,100.00	\$ 5,000.00	\$ 5,000.00
52230	OFFICE SUPPLIES	\$ 507.95	\$ 121.26	\$ 2,243.30	\$ 900.00	\$ 900.00	\$ 900.00
55010	MAYOR'S PORTRAIT	\$ -	\$ -	\$ -	\$ 500.00	\$ -	\$ -
57043	PRIOR YR UNPAID BILL	\$ -	\$ -	\$ -	\$ -	\$ -	\$ -
* TOTAL 11121		\$ 91,539.73	\$ 105,854.90	\$ 119,758.58	\$ 129,837.00	\$ 130,295.00	\$ 129,295.00
11135	CITY AUDITOR						
51010	DEPT HEAD SALARY & WAGES	\$ 51,619.47	\$ 59,683.00	\$ 68,189.80	\$ 70,270.00	\$ 69,731.00	\$ 69,731.00
51012	CLERK/ASST SAL & WAGES	\$ 31,536.84	\$ 32,358.56	\$ 35,297.64	\$ 35,298.00	\$ 32,467.00	\$ 32,467.00
51030	OVERTIME	\$ -	\$ -	\$ -	\$ -	\$ -	\$ -
51460	LONGEVITY	\$ 540.00	\$ 600.00	\$ 660.00	\$ 720.00	\$ 580.00	\$ 580.00
51551	TERMINATION LEAVE	\$ -	\$ -	\$ -	\$ -	\$ -	\$ -
52030	REPAIRS & MAINTENANCE	\$ 177.03	\$ 110.20	\$ 145.74	\$ 100.00	\$ 100.00	\$ 100.00
52050	MINOR EQUIPMENT	\$ -	\$ -	\$ -	\$ 100.00	\$ 100.00	\$ 100.00
52150	COMMUNICATIONS	\$ -	\$ -	\$ -	\$ -	\$ -	\$ -
52170	PROFESSIONAL DEV & TRAVEL	\$ 198.00	\$ 689.03	\$ 70.00	\$ 700.00	\$ 700.00	\$ 700.00
52190	PROFESSIONAL SERVICES	\$ 21,310.00	\$ 17,000.00	\$ 21,300.00	\$ 33,300.00	\$ 33,300.00	\$ 33,300.00
52230	OFFICE SUPPLIES	\$ 704.36	\$ 573.86	\$ 856.45	\$ 1,000.00	\$ 1,000.00	\$ 1,000.00
* TOTAL 11135		\$ 106,085.70	\$ 111,014.65	\$ 126,519.63	\$ 141,488.00	\$ 137,978.00	\$ 137,978.00

ORG/ OBJ	DEPARTMENT	2006 EXPENDED	2007 EXPENDED	2008 EXPENDED	2009 CITY COUNCIL	2010 Mayor	2010 Council
11138	PURCHASING						
51010	DEPT HEAD SALARY & WAGES	\$ 43,981.09	\$ 53,234.22	\$ 62,878.64	\$ 65,250.00	\$ 64,750.00	\$ 64,750.00
51012	SENIOR ACCOUNT CLERK SAL & WAG	\$ 24,958.05	\$ 30,315.08	\$ 34,621.44	\$ 28,239.00	\$ 26,260.00	\$ 26,260.00
51013	ACCOUNT CLERK SALARY & WAGES	\$ 24,188.30	\$ 24,818.56	\$ 25,765.87	\$ 25,662.00	\$ -	\$ -
51023	TEMP SALARY & WAGES	\$ -	\$ -	\$ -	\$ -	\$ -	\$ -
51460	LONGEVITY	\$ 630.00	\$ 675.00	\$ 720.00	\$ 765.00	\$ 610.00	\$ 610.00
52050	MINOR EQUIPMENT	\$ -	\$ -	\$ -	\$ 150.00	\$ 150.00	\$ 150.00
52150	COMMUNICATIONS	\$ 163.20	\$ 193.80	\$ 211.75	\$ 400.00	\$ 400.00	\$ 400.00
52170	PROFESSIONAL DEV & TRAVEL	\$ 876.62	\$ 978.02	\$ 1,182.71	\$ 1,250.00	\$ 1,250.00	\$ 1,250.00
52190	PROFESSIONAL SERVICES	\$ 761.50	\$ 1,661.75	\$ 1,209.25	\$ 1,500.00	\$ 1,500.00	\$ 1,500.00
52230	OFFICE SUPPLIES	\$ 2,137.81	\$ 1,115.48	\$ 1,100.46	\$ 1,500.00	\$ 1,500.00	\$ 1,500.00
* TOTAL 11138		\$ 97,696.57	\$ 112,991.91	\$ 127,690.12	\$ 124,716.00	\$ 96,420.00	\$ 96,420.00

11141	ASSESSORS						
51010	CHAIRMAN ASSESS SAL&WAGES	\$ 49,336.26	\$ 56,196.66	\$ 63,475.74	\$ 65,250.00	\$ 64,750.00	\$ 64,750.00
51012	CLERK/ASST SAL & WAGES	\$ 30,035.21	\$ 30,817.80	\$ 35,130.60	\$ 35,131.00	\$ 32,313.00	\$ 32,313.00
51013	P/T CLERK/ASST SAL & WGS	\$ 15,017.41	\$ 15,409.16	\$ 15,932.48	\$ 3,647.00	\$ -	\$ -
51014	ASSESSORS PART TIME SAL&W	\$ 4,000.08	\$ 4,000.08	\$ 2,500.05	\$ 4,001.00	\$ -	\$ -
51460	LONGEVITY	\$ 1,230.00	\$ 1,305.00	\$ 1,380.00	\$ 1,455.00	\$ 1,030.00	\$ 1,030.00
52050	MINOR EQUIPMENT	\$ -	\$ -	\$ -	\$ -	\$ -	\$ -
52170	PROFESSIONAL DEV & TRAVEL	\$ 424.00	\$ 264.00	\$ 201.00	\$ 264.00	\$ 264.00	\$ 264.00
52190	PROFESSIONAL SERVICES	\$ 110.00	\$ 111.85	\$ 123.35	\$ 300.00	\$ 300.00	\$ 300.00
52230	OFFICE SUPPLIES	\$ 5,401.79	\$ 4,787.97	\$ 4,267.73	\$ 5,500.00	\$ 7,300.00	\$ 7,300.00
55030	COMPUTER SOFTWARE	\$ -	\$ -	\$ -	\$ -	\$ -	\$ -
55040	VALUATION MAINTENANCE	\$ 6,500.00	\$ 6,700.00	\$ 5,400.00	\$ 7,000.00	\$ 7,000.00	\$ 7,000.00
55050	VALUATION UPDATE	\$ 5,000.00	\$ 49,475.00	\$ 40,125.00	\$ 71,650.00	\$ 65,000.00	\$ 65,000.00
* TOTAL 11141		\$ 117,054.75	\$ 169,067.52	\$ 168,535.95	\$ 194,198.00	\$ 177,957.00	\$ 177,957.00

11145	CITY TREASURER						
51010	DEPT HEAD SALARY & WAGES	\$ 49,336.26	\$ 56,196.66	\$ 63,475.74	\$ 65,250.00	\$ 64,750.00	\$ 64,750.00
51011	ASSISTANT SALARY & WAGES	\$ 18,237.26	\$ 22,029.24	\$ 24,459.35	\$ 24,460.00	\$ 22,524.00	\$ 22,524.00
51015	COMP PROG/OP SAL & WAGES	\$ 44,649.45	\$ 49,154.30	\$ 54,033.47	\$ 55,212.00	\$ 54,789.00	\$ 54,789.00
51018	PARKING METER CLERK	\$ -	\$ 9,750.00	\$ 9,787.50	\$ 7,830.00	\$ 7,830.00	\$ 7,830.00
51030	OVERTIME	\$ -	\$ -	\$ -	\$ 400.00	\$ 400.00	\$ 400.00
51460	LONGEVITY	\$ 1,050.00	\$ 1,110.00	\$ 1,170.00	\$ 1,230.00	\$ 965.00	\$ 965.00
52033	PARKING METER MAINTENANCE	\$ -	\$ 3,409.87	\$ 70.26	\$ 4,000.00	\$ 4,000.00	\$ 4,000.00
52040	CENTRAL COMPUTER	\$ 77,497.09	\$ 121,760.52	\$ 84,644.99	\$ 95,000.00	\$ 105,000.00	\$ 105,000.00
52050	MINOR EQUIPMENT	\$ 200.00	\$ -	\$ 755.03	\$ 800.00	\$ 800.00	\$ 800.00
52170	PROFESSIONAL DEV & TRAVEL	\$ 221.98	\$ 572.52	\$ 727.47	\$ 1,000.00	\$ 1,000.00	\$ 1,000.00
52190	PROFESSIONAL SERVICES	\$ 9,561.50	\$ 15,359.17	\$ 15,759.09	\$ 36,500.00	\$ 36,500.00	\$ 36,500.00
52230	OFFICE SUPPLIES	\$ 1,202.09	\$ 558.25	\$ 1,973.70	\$ 2,000.00	\$ 2,000.00	\$ 1,750.00

ORG/ OBJ	DEPARTMENT	2006 EXPENDED	2007 EXPENDED	2008 EXPENDED	2009 CITY COUNCIL	2010 Mayor	2010 Council
11145	CITY TREASURER						
52250	POSTAGE	\$ 38,104.45	\$ 44,097.87	\$ 47,098.82	\$ 46,000.00	\$ 43,500.00	\$ 43,500.00
52280	CENTRAL COPIER	\$ 4,771.90	\$ 10,351.25	\$ 2,652.12	\$ 6,000.00	\$ 6,000.00	\$ 4,000.00
* TOTAL 11145		\$ 244,831.98	\$ 334,349.65	\$ 306,607.54	\$ 345,682.00	\$ 350,058.00	\$ 347,808.00

11146	TAX COLLECTOR						
51012	SENIOR ACCT CLERK SAL&WGS	\$ 31,536.84	\$ 32,358.56	\$ 35,297.64	\$ 35,298.00	\$ 32,467.00	\$ 32,467.00
51013	SENIOR CLERK	\$ 39,453.13	\$ 30,817.80	\$ 31,864.45	\$ 31,865.00	\$ -	\$ -
51014	PART TIME CLERK SAL&WAGES	\$ -	\$ -	\$ -	\$ -	\$ -	\$ -
51460	LONGEVITY	\$ 900.00	\$ 930.00	\$ 1,110.00	\$ 1,170.00	\$ 1,020.00	\$ 1,020.00
51551	TERMINATION LEAVE	\$ -	\$ -	\$ -	\$ -	\$ -	\$ -
52030	REPAIRS & MAINTENANCE	\$ -	\$ -	\$ -	\$ -	\$ -	\$ -
52050	MINOR EQUIPMENT	\$ 1,682.82	\$ 980.05	\$ 113.15	\$ 500.00	\$ 500.00	\$ 500.00
52150	COMMUNICATIONS	\$ 1,025.40	\$ 667.20	\$ 627.30	\$ 1,000.00	\$ 1,000.00	\$ 1,000.00
52170	PROFESSIONAL DEV & TRAVEL	\$ 115.00	\$ 120.00	\$ 120.00	\$ 500.00	\$ 500.00	\$ 500.00
52190	PROFESSIONAL SERVICES	\$ 4,905.98	\$ 2,063.17	\$ 1,575.00	\$ 5,400.00	\$ 5,400.00	\$ 2,400.00
52230	OFFICE SUPPLIES	\$ 1,544.54	\$ 2,782.78	\$ 1,968.94	\$ 2,000.00	\$ 2,000.00	\$ 2,000.00
52250	POSTAGE	\$ 8,389.78	\$ -	\$ -	\$ -	\$ 7,500.00	\$ 7,500.00
* TOTAL 11146		\$ 89,553.49	\$ 70,719.56	\$ 72,676.48	\$ 77,733.00	\$ 50,387.00	\$ 47,387.00

11151	LAW						
51010	DEPT HEAD SALARY & WAGES	\$ 34,320.47	\$ 41,219.88	\$ 57,872.84	\$ 69,768.00	\$ 69,233.00	\$ 69,233.00
51011	ASSISTANT SALARY & WAGES	\$ 27,915.52	\$ 27,808.56	\$ 31,428.78	\$ 38,564.00	\$ 38,269.00	\$ 38,269.00
52170	PROFESSIONAL DEV & TRAVEL	\$ 380.00	\$ -	\$ 560.00	\$ 500.00	\$ 1,000.00	\$ 1,000.00
52230	OFFICE SUPPLIES	\$ 3,500.00	\$ 3,500.00	\$ 1,282.41	\$ 500.00	\$ 2,500.00	\$ 2,500.00
55051	DEPOSITION & DISCOVERY	\$ 2,000.00	\$ 2,000.00	\$ 285.00	\$ 3,000.00	\$ 500.00	\$ 500.00
* TOTAL 11151		\$ 68,115.99	\$ 74,528.44	\$ 91,429.03	\$ 112,332.00	\$ 111,502.00	\$ 111,502.00

11152	PERSONNEL						
51010	DEPT HEAD SALARY & WAGES	\$ 51,434.30	\$ 59,580.30	\$ 68,169.10	\$ 70,270.00	\$ 69,731.00	\$ 69,731.00
51023	TEMP P/T CLERK/TYPIST	\$ 5,108.52	\$ 5,516.39	\$ 5,411.52	\$ 6,500.00	\$ 6,500.00	\$ 6,500.00
51460	LONGEVITY	\$ -	\$ 150.00	\$ 180.00	\$ 210.00	\$ 40.00	\$ 40.00
51551	TERMINATION LEAVE	\$ -	\$ -	\$ -	\$ -	\$ -	\$ -
52050	MINOR EQUIPMENT	\$ -	\$ -	\$ 185.47	\$ 250.00	\$ 250.00	\$ 250.00
52150	COMMUNICATIONS	\$ -	\$ 306.72	\$ 1,421.20	\$ 1,500.00	\$ 1,500.00	\$ 1,000.00
52170	PROFESSIONAL DEV & TRAVEL	\$ 411.10	\$ 703.79	\$ 814.42	\$ 1,000.00	\$ 1,000.00	\$ 700.00
52190	PROFESSIONAL SERVICES	\$ 1,168.45	\$ 1,943.97	\$ 8,062.56	\$ 38,000.00	\$ 3,240.00	\$ 3,240.00
52191	V.I.P.S. PROGRAM	\$ -	\$ -	\$ -	\$ -	\$ -	\$ -
52230	OFFICE SUPPLIES	\$ 634.07	\$ 552.70	\$ 404.15	\$ 750.00	\$ 750.00	\$ 750.00
* TOTAL 11152		\$ 58,756.44	\$ 68,753.87	\$ 84,648.42	\$ 118,480.00	\$ 83,011.00	\$ 82,211.00

ORG/ OBJ	DEPARTMENT	2006 EXPENDED	2007 EXPENDED	2008 EXPENDED	2009 CITY COUNCIL	2010 Mayor	2010 Council
11161	CITY CLERK						
51010	DEPT HEAD SALARY & WAGES	\$ 51,756.04	\$ 57,535.40	\$ 63,745.60	\$ 65,250.00	\$ 64,750.00	\$ 64,750.00
51011	ASSISTANT SALARY & WAGES	\$ 32,122.66	\$ 32,959.68	\$ 36,198.61	\$ 36,199.00	\$ 33,296.00	\$ 33,296.00
51012	SENIOR CLERK SAL & WAGES	\$ 30,035.21	\$ 30,817.80	\$ 31,864.45	\$ 31,865.00	\$ 29,310.00	\$ 29,310.00
51460	LONGEVITY	\$ 2,010.00	\$ 2,220.00	\$ 2,310.00	\$ 2,400.00	\$ 2,290.00	\$ 1,200.00
52050	MINOR EQUIPMENT	\$ -	\$ 595.00	\$ 328.15	\$ 500.00	\$ 500.00	\$ 500.00
52170	PROFESSIONAL DEV & TRAVEL	\$ 315.60	\$ 480.00	\$ 275.00	\$ 500.00	\$ 500.00	\$ 500.00
52190	PROFESSIONAL SERVICES	\$ 1,582.06	\$ 843.50	\$ -	\$ 2,000.00	\$ 2,000.00	\$ 2,000.00
52230	OFFICE SUPPLIES	\$ 1,193.11	\$ 843.56	\$ 624.98	\$ 1,000.00	\$ 1,000.00	\$ 1,000.00
* TOTAL 11161		\$ 119,014.68	\$ 126,294.94	\$ 135,346.79	\$ 139,714.00	\$ 133,646.00	\$ 132,556.00
11162	ELECTION & REGISTRATION						
51010	BD OF REGISTRATION SAL&WA	\$ 3,200.00	\$ 3,200.00	\$ 3,508.33	\$ 3,700.00	\$ 3,700.00	\$ 3,700.00
51013	ELECTION OFFICERS SAL&WGS	\$ 20,803.52	\$ 10,468.88	\$ 12,982.18	\$ 17,100.00	\$ 14,000.00	\$ 14,000.00
52050	MINOR EQUIPMENT	\$ -	\$ -	\$ -	\$ -	\$ -	\$ -
52150	COMMUNICATIONS	\$ 1,392.30	\$ 1,081.20	\$ 799.68	\$ 1,500.00	\$ 1,500.00	\$ 1,500.00
52190	PROFESSIONAL SERVICES	\$ 16,015.58	\$ 15,412.30	\$ 20,471.29	\$ 24,000.00	\$ 20,000.00	\$ 20,000.00
52230	OFFICE SUPPLIES	\$ 3,081.61	\$ 1,931.71	\$ 2,651.03	\$ 3,000.00	\$ 3,000.00	\$ 3,000.00
55202	VOTING EQUIPMENT	\$ -	\$ -	\$ -	\$ -	\$ -	\$ -
* TOTAL 11162		\$ 44,493.01	\$ 32,094.09	\$ 40,412.51	\$ 49,300.00	\$ 42,200.00	\$ 42,200.00
11165	LICENSE COMMISSION						
51012	CLERK/ASST SAL & WAGES	\$ 400.00	\$ -	\$ -	\$ -	\$ -	\$ -
51014	LICENSE BD SALARY & WAGES	\$ 1,700.00	\$ 1,700.00	\$ 1,700.00	\$ 1,700.00	\$ -	\$ -
51030	OVERTIME	\$ -	\$ -	\$ -	\$ 100.00	\$ 100.00	\$ 100.00
52150	COMMUNICATIONS	\$ 156.00	\$ 40.00	\$ 45.90	\$ 300.00	\$ 300.00	\$ 300.00
52190	PROFESSIONAL SERVICES	\$ -	\$ -	\$ 50.00	\$ -	\$ -	\$ -
52230	OFFICE SUPPLIES	\$ 39.00	\$ -	\$ 141.09	\$ 300.00	\$ 300.00	\$ 300.00
* TOTAL 11165		\$ 2,295.00	\$ 1,740.00	\$ 1,936.99	\$ 2,400.00	\$ 700.00	\$ 700.00
11171	CONSERVATION COMMISSION						
51011	CONSERVATION AGENT SAL&WGS	\$ 24,684.24	\$ 25,703.08	\$ 22,590.00	\$ 22,590.00	\$ 20,000.00	\$ 20,000.00
51014	BOARD & COMM SAL & WAGES	\$ 3,700.00	\$ 3,700.00	\$ 3,700.00	\$ 3,700.00	\$ -	\$ -
51460	LONGEVITY	\$ 120.00	\$ 135.00	\$ 150.00	\$ 180.00	\$ -	\$ -
52170	PROFESSIONAL DEV & TRAVEL	\$ -	\$ -	\$ -	\$ -	\$ -	\$ -
52190	PROFESSIONAL SERVICES	\$ -	\$ -	\$ -	\$ -	\$ -	\$ -
52230	OFFICE SUPPLIES	\$ 16.68	\$ 103.00	\$ 200.00	\$ 200.00	\$ 200.00	\$ 200.00
* TOTAL 11171		\$ 28,520.92	\$ 29,641.08	\$ 26,640.00	\$ 26,670.00	\$ 20,200.00	\$ 20,200.00
11175	PLANNING BOARD						
51011	PLANNING AGENT SALARY & WAGES	\$ -	\$ 1,594.10	\$ 26,578.16	\$ -	\$ -	\$ -

ORG/ OBJ	DEPARTMENT	2006 EXPENDED	2007 EXPENDED	2008 EXPENDED	2009 CITY COUNCIL	2010 Mayor	2010 Council
11175	PLANNING BOARD						
51014	BOARD & COMM SAL & WAGES	\$ 3,200.00	\$ 3,200.00	\$ 3,150.00	\$ 3,200.00	\$ -	\$ -
51460	LONGEVITY	\$ -	\$ -	\$ 15.00	\$ -	\$ -	\$ -
52030	REPAIRS & MAINTENANCE	\$ -	\$ 125.00	\$ 155.00	\$ 200.00	\$ 200.00	\$ 200.00
52150	COMMUNICATIONS	\$ 257.40	\$ 310.50	\$ 183.93	\$ 400.00	\$ 400.00	\$ 400.00
52170	PROFESSIONAL DEV & TRAVEL	\$ -	\$ -	\$ -	\$ -	\$ -	\$ -
52190	PROFESSIONAL SERVICES	\$ -	\$ -	\$ -	\$ -	\$ -	\$ -
52198	OPEN SPACE PLAN	\$ 1,350.00	\$ -	\$ -	\$ -	\$ -	\$ -
52230	OFFICE SUPPLIES	\$ 200.00	\$ -	\$ -	\$ -	\$ -	\$ -
* TOTAL 11175		\$ 5,007.40	\$ 5,229.60	\$ 30,082.09	\$ 3,800.00	\$ 600.00	\$ 600.00
11176	ZONING BOARD OF APPEALS						
51014	BOARD & COMM SAL & WAGES	\$ 2,150.00	\$ 2,200.00	\$ 2,175.00	\$ 2,200.00	\$ -	\$ -
52150	COMMUNICATIONS	\$ 3,187.80	\$ 3,289.14	\$ 2,791.20	\$ 4,000.00	\$ 1,000.00	\$ 1,000.00
52170	PROFESSIONAL DEV & TRAVEL	\$ 47.17	\$ -	\$ 130.00	\$ 300.00	\$ 300.00	\$ 300.00
52230	OFFICE SUPPLIES	\$ 284.05	\$ 134.47	\$ 204.29	\$ 300.00	\$ 300.00	\$ 300.00
* TOTAL 11176		\$ 5,669.02	\$ 5,623.61	\$ 5,300.49	\$ 6,800.00	\$ 1,600.00	\$ 1,600.00
11182	COMMUNITY DEVELOPMENT						
51010	DEPT HEAD SALARY & WAGES	\$ 53,166.94	\$ 55,363.88	\$ 65,250.00	\$ 65,250.00	\$ 64,750.00	\$ 64,750.00
51012	CLERK/ASST SAL & WAGES	\$ 24,202.75	\$ 25,677.53	\$ 27,478.60	\$ 27,479.00	\$ 26,416.00	\$ 26,416.00
51025	PARKER POND SALARY & WAGES	\$ -	\$ -	\$ -	\$ -	\$ -	\$ -
51460	LONGEVITY	\$ 645.00	\$ 705.00	\$ 765.00	\$ 825.00	\$ 685.00	\$ 685.00
52030	REPAIRS & MAINTENANCE	\$ -	\$ 153.50	\$ 140.43	\$ 250.00	\$ 250.00	\$ 250.00
52150	COMMUNICATIONS	\$ -	\$ -	\$ -	\$ -	\$ -	\$ -
52170	PROFESSIONAL DEV & TRAVEL	\$ -	\$ -	\$ -	\$ -	\$ -	\$ -
52190	PROFESSIONAL SERVICES	\$ -	\$ 3,570.00	\$ 2,450.00	\$ -	\$ -	\$ -
52230	OFFICE SUPPLIES	\$ 475.15	\$ 500.00	\$ 538.90	\$ 550.00	\$ 550.00	\$ 550.00
55191	PARKER POND CONSULTANT EX	\$ -	\$ -	\$ -	\$ -	\$ -	\$ -
55192	PARKER POND RESTORATION PROJEC	\$ -	\$ -	\$ -	\$ -	\$ -	\$ -
55195	MATCH-NO CENTRAL PATHWAY EXP	\$ -	\$ -	\$ -	\$ -	\$ -	\$ -
55203	CONANT BALL SITE INVESTIGATION	\$ -	\$ -	\$ -	\$ -	\$ -	\$ -
55208	CHAMBER MARKETING CONTRACT	\$ -	\$ -	\$ -	\$ -	\$ -	\$ -
56906	DOWNTOWN PARTNERSHIP PROG	\$ -	\$ -	\$ -	\$ -	\$ -	\$ -
57800	MARY KANE BUILDING REPAIRS	\$ -	\$ -	\$ -	\$ -	\$ -	\$ -
* TOTAL 11182		\$ 78,489.84	\$ 85,969.91	\$ 96,622.93	\$ 94,354.00	\$ 92,651.00	\$ 92,651.00
11192	CITY HALL MAINTENANCE						
51016	CUSTODIAN SALARY & WAGES	\$ 66,342.78	\$ 68,107.54	\$ 59,254.71	\$ 38,024.00	\$ 63,443.00	\$ 63,443.00
51030	OVERTIME	\$ 3,278.35	\$ 2,357.08	\$ 2,600.17	\$ 1,000.00	\$ 2,500.00	\$ 2,500.00
51031	BUILDING CHECKS	\$ 2,847.16	\$ 3,409.02	\$ 2,819.95	\$ -	\$ -	\$ -

ORG/ OBJ	DEPARTMENT	2006 EXPENDED	2007 EXPENDED	2008 EXPENDED	2009 CITY COUNCIL	2010 Mayor	2010 Council
11192	CITY HALL MAINTENANCE						
51100	SHIFT DIFFERENTIAL	\$ 1,007.78	\$ 1,007.50	\$ 984.75	\$ 1,000.00	\$ 1,000.00	\$ 1,000.00
51460	LONGEVITY	\$ 600.00	\$ 660.00	\$ 720.00	\$ -	\$ -	\$ -
51551	TERMINATION LEAVE	\$ -	\$ -	\$ 15,776.96	\$ -	\$ -	\$ -
52030	REPAIRS & MAINTENANCE	\$ 22,654.35	\$ 37,841.56	\$ 40,682.33	\$ 20,000.00	\$ 20,000.00	\$ 20,000.00
52050	MINOR EQUIPMENT	\$ 440.58	\$ 90.80	\$ 598.93	\$ 3,000.00	\$ 3,000.00	\$ 3,000.00
52110	ENERGY & UTILITIES	\$ 69,404.13	\$ 72,279.15	\$ 86,838.78	\$ 80,000.00	\$ 70,000.00	\$ 70,000.00
52150	COMMUNICATIONS	\$ -	\$ -	\$ 941.38	\$ 600.00	\$ 600.00	\$ 600.00
52190	PROFESSIONAL SERVICES	\$ 350.00	\$ -	\$ -	\$ -	\$ -	\$ -
55023	SPRINKLER HEADS	\$ -	\$ -	\$ -	\$ 500.00	\$ 500.00	\$ 500.00
55130	PHONE SYSTEM	\$ -	\$ -	\$ -	\$ -	\$ -	\$ -
57090	CLOTH/UNIFORM ALLOWANCE	\$ 700.00	\$ 700.00	\$ 700.00	\$ 350.00	\$ 700.00	\$ 700.00
58302	CITY HALL NEW BOILER	\$ -	\$ -	\$ -	\$ -	\$ -	\$ -
58303	BOILER #2 REPLACEMENT	\$ -	\$ -	\$ -	\$ -	\$ -	\$ -
58304	ANNEX BOILER REPLACEMENT	\$ -	\$ -	\$ -	\$ -	\$ -	\$ -
58307	OIL TANK REPLACEMENT	\$ -	\$ -	\$ -	\$ -	\$ -	\$ -
* TOTAL 11192		\$ 167,625.13	\$ 186,452.65	\$ 211,917.96	\$ 144,474.00	\$ 161,743.00	\$ 161,743.00

11194	CABLE COMMISSION						
51010	DEPT HEAD SALARY & WAGES	\$ 43,664.26	\$ 46,000.24	\$ 47,682.61	\$ 48,925.00	\$ 50,393.00	\$ 50,393.00
51011	ASSISTANT SALARY & WAGES	\$ 30,401.28	\$ 35,346.66	\$ 36,141.90	\$ 37,080.00	\$ 38,192.00	\$ 38,192.00
51013	PART TIME PRODUCTION ASST	\$ -	\$ -	\$ 6,564.00	\$ 9,984.00	\$ 9,984.00	\$ 9,984.00
51023	TEMP SALARY & WAGES	\$ -	\$ 275.00	\$ 1,331.00	\$ -	\$ -	\$ -
51460	LONGEVITY	\$ -	\$ 210.00	\$ 390.00	\$ 450.00	\$ 510.00	\$ 510.00
52030	REPAIRS & MAINTENANCE	\$ 180.00	\$ -	\$ 743.43	\$ 3,000.00	\$ 2,500.00	\$ 2,500.00
52050	MINOR EQUIPMENT	\$ 977.67	\$ 583.19	\$ 1,449.22	\$ 2,000.00	\$ 1,500.00	\$ 1,500.00
52150	COMMUNICATIONS	\$ 5,485.94	\$ 4,877.43	\$ 5,232.35	\$ 6,000.00	\$ 6,000.00	\$ 6,000.00
52170	PROFESSIONAL DEV & TRAVEL	\$ -	\$ -	\$ -	\$ 200.00	\$ 200.00	\$ 200.00
52190	PROFESSIONAL SERVICES	\$ 2,000.00	\$ 4,000.00	\$ -	\$ 1,000.00	\$ 1,000.00	\$ 1,000.00
52230	OFFICE SUPPLIES	\$ 1,501.48	\$ 441.04	\$ 984.11	\$ 1,000.00	\$ 1,000.00	\$ 1,000.00
52380	INDIRECT COSTS REIMBURSE	\$ -	\$ -	\$ -	\$ 10,120.00	\$ 10,410.00	\$ 10,410.00
55123	NEW EQUIPMENT	\$ 11,132.05	\$ 9,560.42	\$ 23,446.27	\$ 31,780.00	\$ 16,300.00	\$ 16,300.00
61460	ENC LONGEVITY	\$ -	\$ 330.00	\$ -	\$ -	\$ -	\$ -
* TOTAL 11194		\$ 95,342.68	\$ 101,623.98	\$ 123,964.89	\$ 151,539.00	\$ 137,989.00	\$ 137,989.00

11199	MAYOR'S UNCLASSIFIED						
51000	SCHOOL EXP(BUDGET ONLY)RESERVE	\$ -	\$ -	\$ -	\$ -	\$ -	\$ -
51010	SALARY & WAGES - RESERVE	\$ -	\$ -	\$ -	\$ -	\$ -	\$ -
51011	PERSONNEL - RESERVE	\$ -	\$ -	\$ -	\$ -	\$ -	\$ -
51030	OVERTIME - RESERVE	\$ -	\$ -	\$ -	\$ -	\$ -	\$ -
51551	TERMINATION LEAVE - RESERVE	\$ -	\$ -	\$ -	\$ 178,000.00	\$ 302,000.00	\$ 302,000.00

ORG/ OBJ	DEPARTMENT	2006 EXPENDED	2007 EXPENDED	2008 EXPENDED	2009 CITY COUNCIL	2010 Mayor	2010 Council
11199	MAYOR'S UNCLASSIFIED						
52031	CHAIR RESTORATION	\$ -	\$ -	\$ -	\$ -	\$ -	\$ -
52110	ENERGY & UTILITIES - RESERVE	\$ -	\$ -	\$ -	\$ -	\$ -	\$ -
52112	HOLIDAY LIGHT & DECORAT	\$ -	\$ -	\$ -	\$ -	\$ -	\$ -
52113	OLD POL STA-ENERGY&UTILIT	\$ -	\$ -	\$ -	\$ -	\$ -	\$ -
52152	TELEPHONE	\$ 59,770.34	\$ 63,185.01	\$ 63,609.66	\$ 67,500.00	\$ 55,000.00	\$ 55,000.00
52153	COMM SYSTEM REPLACEMENT	\$ -	\$ -	\$ -	\$ -	\$ -	\$ -
52171	MASS MUNICIPAL DUES	\$ 2,335.00	\$ 2,335.00	\$ 2,517.00	\$ 2,500.00	\$ 2,500.00	\$ 2,500.00
52191	MEDICAL EXAMS	\$ 2,777.00	\$ 5,994.00	\$ 2,463.00	\$ 5,000.00	\$ 5,000.00	\$ 5,000.00
52192	UNCLASSIFIED LABOR LAW	\$ 33,948.00	\$ 30,000.00	\$ 15,625.00	\$ -	\$ -	\$ -
52193	ARBITRATION	\$ -	\$ 175.00	\$ 200.00	\$ 100.00	\$ 100.00	\$ 100.00
52194	PRINTING & BINDING	\$ -	\$ -	\$ -	\$ 750.00	\$ 750.00	\$ 750.00
52195	BUILDING DEMOLITION	\$ -	\$ -	\$ -	\$ -	\$ -	\$ -
52993	SUMMER CELEBRATIONS	\$ -	\$ -	\$ -	\$ -	\$ -	\$ -
56501	NORFOLK COUNTY AGRICULTURAL HS	\$ -	\$ -	\$ -	\$ -	\$ -	\$ -
56900	MONT REG PLANN COMMISSION	\$ 4,982.16	\$ 5,106.71	\$ 5,234.38	\$ 5,366.00	\$ 5,500.00	\$ 5,500.00
56901	COMM ACTION COMMISSION	\$ -	\$ -	\$ -	\$ -	\$ -	\$ -
56902	TAXES OTHER TOWNS	\$ 1,528.26	\$ 1,584.65	\$ 2,503.47	\$ 1,800.00	\$ 1,800.00	\$ 1,800.00
56906	DOWNTOWN PARTNERSHIP PROG	\$ -	\$ -	\$ -	\$ -	\$ -	\$ -
57043	PRIOR YR UNPAID BILL	\$ -	\$ -	\$ -	\$ -	\$ -	\$ -
57303	WATER	\$ 14,288.77	\$ 13,640.41	\$ 16,936.34	\$ 15,000.00	\$ 15,000.00	\$ 15,000.00
57500	DAMAGES PERS & PROPERTY	\$ 436.00	\$ 110.00	\$ 6,155.00	\$ 3,000.00	\$ 3,000.00	\$ 3,000.00
58100	BOND - LAND ACQUISITION	\$ -	\$ -	\$ -	\$ -	\$ -	\$ -
58254	BOND-REMODEL&BLDG REPAIRS	\$ -	\$ 10,927.71	\$ 54,999.99	\$ -	\$ -	\$ -
* TOTAL 11199		\$ 120,065.53	\$ 133,058.49	\$ 170,243.84	\$ 279,016.00	\$ 390,650.00	\$ 390,650.00

12210	POLICE						
51010	DEPT HEAD SALARY & WAGES	\$ 76,371.04	\$ 79,156.22	\$ 82,544.56	\$ 83,320.00	\$ 82,681.00	\$ 82,681.00
51011	OFFICE MANAGER SAL & WGS	\$ -	\$ -	\$ -	\$ -	\$ -	\$ -
51012	SENIOR CLERKS SAL & WGS	\$ 60,070.42	\$ 61,635.60	\$ 68,063.06	\$ 68,064.00	\$ 62,605.00	\$ 62,605.00
51013	POLICE OFFICERS SAL & WGS	\$ 848,932.82	\$ 905,746.23	\$ 942,004.32	\$ 953,356.00	\$ 877,952.00	\$ 877,952.00
51014	POLICE SERGEANTS SAL&WGS	\$ 240,608.05	\$ 246,877.80	\$ 255,263.20	\$ 255,264.00	\$ 266,455.00	\$ 266,455.00
51015	COMP PROG/OP SAL & WAGES	\$ 44,649.45	\$ 49,154.30	\$ 54,033.47	\$ 55,211.00	\$ 54,789.00	\$ 54,789.00
51016	CUSTODIAN SALARY & WAGES	\$ 33,171.39	\$ 34,036.08	\$ 28,460.91	\$ -	\$ -	\$ -
51017	POL LIEUTENANTS SAL & WGS	\$ 104,907.38	\$ 107,640.00	\$ 111,295.62	\$ 111,296.00	\$ 116,084.00	\$ 116,084.00
51018	METER OFFICER SAL & WGS	\$ -	\$ -	\$ -	\$ -	\$ -	\$ -
51019	MATRONS SAL & WGS	\$ -	\$ -	\$ -	\$ -	\$ -	\$ -
51021	DEPUTY CHIEF SAL & WGS	\$ 61,219.20	\$ 64,993.50	\$ 69,260.07	\$ 70,270.00	\$ 69,731.00	\$ 69,731.00
51023	TEMPORARY HELP SAL & WGS	\$ -	\$ -	\$ -	\$ -	\$ -	\$ -
51030	OVERTIME	\$ 268,656.50	\$ 283,747.91	\$ 274,447.88	\$ 280,000.00	\$ 280,000.00	\$ 280,000.00
51031	MATCH - GRANT	\$ 5,500.00	\$ 2,500.00	\$ 5,000.00	\$ 5,000.00	\$ 5,000.00	\$ 5,000.00

ORG/ OBJ	DEPARTMENT	2006 EXPENDED	2007 EXPENDED	2008 EXPENDED	2009 CITY COUNCIL	2010 Mayor	2010 Council
12210	POLICE						
51032	COMPENSATORY TIME	\$ 19,090.26	\$ 7,899.15	\$ (521.62)	\$ -	\$ -	\$ -
51050	HOLIDAY PAY	\$ 141,999.91	\$ 147,806.46	\$ 152,954.34	\$ 154,621.00	\$ 135,689.00	\$ 135,689.00
51100	SHIFT DIFFERENTIAL	\$ 103,297.47	\$ 102,967.42	\$ 106,559.81	\$ 110,000.00	\$ 113,000.00	\$ 110,000.00
51101	COLLEGE CREDITS	\$ 36,000.00	\$ 34,000.00	\$ 61,133.85	\$ 64,160.00	\$ 57,637.00	\$ 57,637.00
51102	WORKING OUT OF GRADE	\$ 1,993.37	\$ 1,887.59	\$ 1,301.99	\$ 3,500.00	\$ 3,500.00	\$ 3,500.00
51200	PHYSICAL FITNESS	\$ -	\$ 1,499.63	\$ 2,998.20	\$ 3,500.00	\$ 3,500.00	\$ 3,500.00
51460	LONGEVITY	\$ 14,490.00	\$ 15,330.00	\$ 16,230.00	\$ 16,680.00	\$ 12,310.00	\$ 12,310.00
51551	TERMINATION LEAVE	\$ -	\$ -	\$ 69.26	\$ -	\$ -	\$ -
52030	REPAIRS & MAINTENANCE	\$ 26,437.48	\$ 24,321.11	\$ 25,960.24	\$ 25,000.00	\$ 26,000.00	\$ 26,000.00
52033	PARKING METER MAINTENANCE	\$ 34,452.86	\$ -	\$ -	\$ -	\$ -	\$ -
52050	MINOR EQUIPMENT	\$ 3,059.00	\$ 6,509.46	\$ 3,079.84	\$ 5,200.00	\$ 5,200.00	\$ 5,200.00
52110	ENERGY & UTILITIES	\$ 34,131.60	\$ 27,977.61	\$ 29,092.04	\$ 37,312.00	\$ 38,500.00	\$ 38,500.00
52150	COMMUNICATIONS	\$ 12,839.14	\$ 13,601.75	\$ 15,014.24	\$ 16,800.00	\$ 16,800.00	\$ 16,800.00
52170	PROFESSIONAL DEV & TRAVEL	\$ 6,544.20	\$ 6,034.10	\$ 2,778.58	\$ 4,560.00	\$ 4,560.00	\$ 4,560.00
52171	CRIMINAL JUSTICE POL TRAINING	\$ -	\$ -	\$ -	\$ -	\$ -	\$ -
52190	PROFESSIONAL SERVICES	\$ 31,415.60	\$ 45,278.28	\$ 46,404.37	\$ 58,579.00	\$ 60,000.00	\$ 60,000.00
52230	OFFICE SUPPLIES	\$ 11,376.31	\$ 10,265.34	\$ 7,339.90	\$ 9,000.00	\$ 9,400.00	\$ 9,400.00
55011	AIR CONDITIONING REPLACEMENT	\$ -	\$ -	\$ -	\$ -	\$ -	\$ -
55012	DOMESTIC VIOLENCE SUPPORT	\$ 15,350.07	\$ 15,825.40	\$ 14,096.06	\$ 14,700.00	\$ -	\$ -
55060	ARMORY EQUIPMENT	\$ 1,980.90	\$ 5,842.17	\$ 5,291.95	\$ 6,000.00	\$ 6,000.00	\$ 6,000.00
55070	CAMERA EQUIPMENT	\$ -	\$ -	\$ -	\$ -	\$ -	\$ -
55080	PORTABLE RADIOS	\$ 3,687.25	\$ 3,879.00	\$ 3,500.00	\$ 4,000.00	\$ 4,000.00	\$ 4,000.00
55090	NEW POLICE VEHICLES	\$ 63,701.00	\$ -	\$ -	\$ -	\$ -	\$ -
55114	BULLET PROOF VESTS	\$ 2,400.00	\$ -	\$ -	\$ -	\$ -	\$ -
57200	CLEANING CONTRACT	\$ -	\$ -	\$ -	\$ -	\$ 18,734.00	\$ 18,734.00
55145	RADIO SYSTEM UPGRADE	\$ 7,719.02	\$ 1,774.50	\$ 2,426.75	\$ 7,800.00	\$ 7,800.00	\$ 7,800.00
57090	CLOTH/UNIFORM ALLOWANCE	\$ 33,453.23	\$ 35,531.71	\$ 34,434.31	\$ 33,452.00	\$ 31,107.00	\$ 31,107.00
57800	BUILDING REPAIRS	\$ 7,150.00	\$ -	\$ 3,225.57	\$ 5,000.00	\$ 5,000.00	\$ 5,000.00
* TOTAL 12210		\$ 2,356,654.92	\$ 2,343,718.32	\$ 2,423,742.77	\$ 2,461,645.00	\$ 2,374,034.00	\$ 2,371,034.00

12220	FIRE						
51010	DEPT HEAD SALARY & WAGES	\$ 67,615.12	\$ 71,644.56	\$ 76,216.75	\$ 77,297.00	\$ 76,704.00	\$ 76,704.00
51011	CAPTAINS SALARY & WAGES	\$ 54,971.03	\$ 56,489.68	\$ 58,445.92	\$ 58,449.00	\$ 58,169.00	\$ 58,169.00
51012	SENIOR CLERK SAL & WAGES	\$ 30,035.19	\$ 30,817.80	\$ 31,864.45	\$ 31,865.00	\$ 29,310.00	\$ 29,310.00
51013	PRIVATES SALARY & WAGES	\$ 970,558.27	\$ 942,123.38	\$ 999,184.85	\$ 987,532.00	\$ 823,004.00	\$ 823,004.00
51014	SUPT FIRE ALARM SAL & WGS	\$ -	\$ -	\$ -	\$ -	\$ -	\$ -
51015	SIGNAL MAINTENANCE SAL&WG	\$ -	\$ -	\$ -	\$ -	\$ -	\$ -
51016	LIEUTENANTS SALARY&WAGES	\$ 260,900.29	\$ 319,776.76	\$ 328,854.38	\$ 323,438.00	\$ 321,891.00	\$ 321,891.00
51020	CALL FIREFIGHTERS SAL&WGS	\$ -	\$ -	\$ -	\$ -	\$ -	\$ -
51024	MECHANIC SALARY & WAGES	\$ -	\$ -	\$ -	\$ -	\$ -	\$ -

ORG/ OBJ	DEPARTMENT	2006 EXPENDED	2007 EXPENDED	2008 EXPENDED	2009 CITY COUNCIL	2010 Mayor	2010 Council
12240	DISPATCHERS						
51013	FULL TIME DISPATCHERS SAL	\$ 117,174.96	\$ 147,102.48	\$ 155,869.20	\$ 155,870.00	\$ 115,870.00	\$ 115,870.00
51022	PART TIME DISPATCHERS SAL	\$ 19,128.88	\$ 21,712.22	\$ 20,436.64	\$ 20,000.00	\$ 20,000.00	\$ 20,000.00
51030	OVERTIME	\$ 28,863.67	\$ 21,556.72	\$ 16,512.01	\$ 20,000.00	\$ 20,000.00	\$ 20,000.00
51032	COMPENSATORY TIME	\$ 640.60	\$ 869.58	\$ 623.75	\$ -	\$ -	\$ -
51050	HOLIDAY PAY	\$ 9,485.10	\$ 11,305.46	\$ 11,560.04	\$ 13,000.00	\$ 13,000.00	\$ 13,000.00
51100	SHIFT DIFFERENTIAL	\$ 8,524.40	\$ 10,736.34	\$ 11,061.25	\$ 11,000.00	\$ 11,000.00	\$ 11,000.00
51200	PHYSICAL FITNESS	\$ -	\$ -	\$ -	\$ 200.00	\$ 200.00	\$ 200.00
51460	LONGEVITY	\$ -	\$ 405.00	\$ 300.00	\$ 495.00	\$ 720.00	\$ 720.00
51551	TERMINATION LEAVE	\$ -	\$ 1,506.96	\$ -	\$ -	\$ -	\$ -
52150	COMMUNICATIONS	\$ -	\$ -	\$ -	\$ -	\$ -	\$ -
52170	PROFESSIONAL DEV & TRAVEL	\$ -	\$ -	\$ -	\$ -	\$ -	\$ -
52230	OFFICE SUPPLIES	\$ -	\$ -	\$ -	\$ -	\$ -	\$ -
57090	CLOTH/UNIFORM ALLOWANCE	\$ 2,474.96	\$ 2,825.00	\$ 2,875.00	\$ 3,000.00	\$ 3,000.00	\$ 3,000.00
* TOTAL 12240		\$ 186,292.57	\$ 218,019.76	\$ 219,237.89	\$ 223,565.00	\$ 183,790.00	\$ 183,790.00

12241	BUILDING INSPECTOR						
51010	DEPT HEAD SALARY & WAGES	\$ 49,836.26	\$ 58,696.82	\$ 67,991.20	\$ 70,270.00	\$ 69,731.00	\$ 69,731.00
51011	ASST BLDG INSP SAL & WGS	\$ 36,845.57	\$ 43,506.06	\$ 50,488.09	\$ -	\$ -	\$ -
51012	CLERK/ASST SAL & WAGES	\$ 30,035.21	\$ 30,817.80	\$ 35,130.60	\$ 35,131.00	\$ 32,313.00	\$ 32,313.00
51013	P/T CLERK/ASST SAL & WGS	\$ 10,646.32	\$ 21,523.51	\$ 25,539.13	\$ 17,225.00	\$ 17,225.00	\$ 17,225.00
51023	ALT BUILDING INSPECTOR	\$ -	\$ -	\$ -	\$ -	\$ 4,000.00	\$ 4,000.00
51030	OVERTIME	\$ 58.36	\$ -	\$ -	\$ 100.00	\$ 100.00	\$ 100.00
51460	LONGEVITY	\$ 870.00	\$ 930.00	\$ 1,140.00	\$ 1,230.00	\$ 910.00	\$ 910.00
51551	TERMINATION LEAVE	\$ -	\$ -	\$ -	\$ -	\$ -	\$ -
52020	BUILDING MAINTENANCE	\$ -	\$ 9,925.00	\$ 96.65	\$ 1,058.00	\$ 1,058.00	\$ 1,058.00
52030	REPAIRS & MAINTENANCE	\$ 1,594.92	\$ 1,999.64	\$ 753.55	\$ 2,500.00	\$ 2,500.00	\$ 2,500.00
52050	MINOR EQUIPMENT	\$ -	\$ 130.90	\$ 287.95	\$ 500.00	\$ 500.00	\$ 500.00
52150	COMMUNICATIONS	\$ 1,199.13	\$ 1,381.38	\$ 1,531.88	\$ 1,500.00	\$ 1,500.00	\$ 1,500.00
52170	PROFESSIONAL DEV & TRAVEL	\$ 725.66	\$ 1,159.31	\$ 1,118.63	\$ 1,500.00	\$ 1,500.00	\$ 1,500.00
52190	PROFESSIONAL SERVICES	\$ 141.18	\$ 393.34	\$ 131.00	\$ 200.00	\$ 200.00	\$ 200.00
52230	OFFICE SUPPLIES	\$ 759.05	\$ 1,011.64	\$ 802.15	\$ 1,200.00	\$ 1,200.00	\$ 1,200.00
52240	VEHICLE SUPPLIES	\$ 218.51	\$ 378.07	\$ 352.39	\$ 1,000.00	\$ 1,000.00	\$ 1,000.00
52280	COPIER EXPENSES	\$ -	\$ -	\$ -	\$ 150.00	\$ 150.00	\$ 150.00
55102	PERSONAL COMPUTER & PRINT	\$ -	\$ -	\$ -	\$ -	\$ -	\$ -
57043	PRIOR YR EARTH TECH REIMBRSMNT	\$ -	\$ -	\$ -	\$ -	\$ -	\$ -
57090	CLOTH/UNIFORM ALLOWANCE	\$ 350.00	\$ 700.00	\$ 700.00	\$ 700.00	\$ 350.00	\$ 350.00
* TOTAL 12241		\$ 133,280.17	\$ 172,553.47	\$ 186,063.22	\$ 134,264.00	\$ 134,237.00	\$ 134,237.00

ORG/ OBJ	DEPARTMENT	2006 EXPENDED	2007 EXPENDED	2008 EXPENDED	2009 CITY COUNCIL	2010 Mayor	2010 Council
12243	PLUMBING & GAS INSPECTOR						
51010	PLUMBING & GAS INSP SALARY & W	\$ 22,308.23	\$ 20,906.50	\$ 30,816.54	\$ 24,019.00	\$ 23,835.00	\$ 23,835.00
51023	ALTERNATE PLUMBING INSPECTOR	\$ 610.45	\$ 5,533.78	\$ -	\$ 3,000.00	\$ 3,000.00	\$ 3,000.00
51460	LONGEVITY	\$ 195.00	\$ 210.00	\$ -	\$ -	\$ -	\$ -
51551	TERMINATION LEAVE	\$ -	\$ 7,169.54	\$ -	\$ -	\$ -	\$ -
52030	REPAIRS & MAINTENANCE	\$ -	\$ -	\$ -	\$ -	\$ -	\$ -
52050	MINOR EQUIPMENT	\$ -	\$ -	\$ -	\$ 100.00	\$ 100.00	\$ 100.00
52170	PROFESSIONAL DEV & TRAVEL	\$ 1,180.02	\$ 1,416.07	\$ 1,511.12	\$ 1,000.00	\$ 1,000.00	\$ 1,000.00
52230	OFFICE SUPPLIES	\$ 7.29	\$ 90.43	\$ -	\$ -	\$ -	\$ -
55102	PERSONAL COMPUTER & PRINT	\$ -	\$ -	\$ -	\$ -	\$ -	\$ -
57090	CLOTH/UNIFORM ALLOWANCE	\$ -	\$ 247.92	\$ 350.00	\$ 350.00	\$ 350.00	\$ 350.00
* TOTAL 12243		\$ 24,300.99	\$ 35,574.24	\$ 32,677.66	\$ 28,469.00	\$ 28,285.00	\$ 28,285.00
12244	WEIGHTS & MEASURES						
51010	DEPT HEAD SALARY & WAGES	\$ 7,507.24	\$ 7,817.16	\$ 8,082.65	\$ 8,083.00	\$ 8,021.00	\$ 8,021.00
52050	MINOR EQUIPMENT	\$ -	\$ -	\$ -	\$ -	\$ -	\$ -
52170	PROFESSIONAL DEV & TRAVEL	\$ -	\$ -	\$ -	\$ -	\$ -	\$ -
52230	OFFICE SUPPLIES	\$ -	\$ 216.68	\$ -	\$ 200.00	\$ 200.00	\$ 200.00
* TOTAL 12244		\$ 7,507.24	\$ 8,033.84	\$ 8,082.65	\$ 8,283.00	\$ 8,221.00	\$ 8,221.00
12245	WIRE INSPECTOR/FIRE ALARM						
51010	WIRE INSPECTOR SALARY & WAGES	\$ 44,927.50	\$ 46,098.00	\$ 47,663.82	\$ 47,664.00	\$ 43,842.00	\$ 43,842.00
51023	TEMP INSPECTOR SALARY & WAGES	\$ 1,940.00	\$ 2,540.00	\$ 1,460.00	\$ 2,500.00	\$ 2,500.00	\$ 2,500.00
52030	REPAIRS & MAINTENANCE	\$ 9,338.97	\$ 469.48	\$ 1,173.06	\$ 7,000.00	\$ 7,000.00	\$ 7,000.00
52032	TRAFFIC MAINTENANCE	\$ -	\$ -	\$ -	\$ -	\$ -	\$ -
52050	MINOR EQUIPMENT	\$ 96.00	\$ 1,212.87	\$ 579.06	\$ 750.00	\$ 750.00	\$ 750.00
52110	ENERGY & UTILITIES	\$ 4,478.73	\$ 4,988.05	\$ 5,230.10	\$ 5,500.00	\$ 5,500.00	\$ 5,500.00
52150	COMMUNICATIONS	\$ 788.04	\$ -	\$ -	\$ -	\$ -	\$ -
52170	PROFESSIONAL DEV & TRAVEL	\$ 76.95	\$ 478.55	\$ 447.55	\$ 500.00	\$ 500.00	\$ 500.00
52230	OFFICE SUPPLIES	\$ -	\$ -	\$ -	\$ -	\$ -	\$ -
52240	VEHICLE SUPPLIES	\$ 692.26	\$ -	\$ -	\$ -	\$ -	\$ -
55120	LONGEVITY	\$ -	\$ -	\$ -	\$ 150.00	\$ 180.00	\$ 180.00
55147	FIBER OPTIC TRAFFIC LIGHT	\$ -	\$ -	\$ -	\$ -	\$ -	\$ -
57090	CLOTH/UNIFORM ALLOWANCE	\$ -	\$ 350.00	\$ 350.00	\$ 350.00	\$ 350.00	\$ 350.00
* TOTAL 12245		\$ 71,101.49	\$ 56,136.95	\$ 56,903.59	\$ 64,414.00	\$ 60,622.00	\$ 60,622.00
12290	ANIMAL CONTROL OFFICER						
51010	ANIMAL CONTROL OFFICER SALARY	\$ 29,232.15	\$ 31,477.42	\$ 34,424.76	\$ 35,135.00	\$ 34,866.00	\$ 34,866.00
51023	ALT ANIMAL CONTROL OFFICER	\$ 9,349.90	\$ 931.00	\$ 3,754.89	\$ 1,000.00	\$ 1,000.00	\$ 1,000.00
51030	OVERTIME	\$ 4,065.62	\$ 147.67	\$ 2,374.50	\$ 500.00	\$ 500.00	\$ 500.00
51460	LONGEVITY	\$ -	\$ 180.00	\$ 210.00	\$ 240.00	\$ 70.00	\$ 70.00

ORG/ OBJ	DEPARTMENT	2006 EXPENDED	2007 EXPENDED	2008 EXPENDED	2009 CITY COUNCIL	2010 Mayor	2010 Council
12290 ANIMAL CONTROL OFFICER							
51551	TERMINATION LEAVE	\$ -	\$ 509.08	\$ 509.28	\$ -	\$ -	\$ -
57090	CLOTH/UNIFORM ALLOWANCE	\$ -	\$ 568.75	\$ 700.00	\$ 700.00	\$ 350.00	\$ 350.00
* TOTAL 12290		\$ 42,647.67	\$ 33,813.92	\$ 41,973.43	\$ 37,575.00	\$ 36,786.00	\$ 36,786.00
12291 CIVIL DEFENSE							
51010	DEPT HEAD SALARY & WAGES	\$ 5,848.68	\$ 5,848.68	\$ 7,905.36	\$ 7,906.00	\$ 2,500.00	\$ 2,500.00
52050	MINOR EQUIPMENT	\$ 2,332.58	\$ 1,229.11	\$ 1,240.87	\$ 500.00	\$ -	\$ -
52170	PROFESSIONAL DEV & TRAVEL	\$ 148.02	\$ 1,263.89	\$ 196.59	\$ 500.00	\$ -	\$ -
52230	OFFICE SUPPLIES	\$ -	\$ 5.69	\$ 168.13	\$ 150.00	\$ -	\$ -
52996	EMERGENCY FUND	\$ -	\$ 34.51	\$ 555.65	\$ 100.00	\$ -	\$ -
55148	EMERGENCY PLAN	\$ -	\$ -	\$ -	\$ -	\$ -	\$ -
* TOTAL 12291		\$ 8,329.28	\$ 8,381.88	\$ 10,066.60	\$ 9,156.00	\$ 2,500.00	\$ 2,500.00
12292 ANIMAL SHELTER							
51023	SHELTER ATTENDANTS	\$ -	\$ 20,536.29	\$ 12,350.04	\$ 22,154.00	\$ 19,154.00	\$ 19,154.00
52030	REPAIRS & MAINTENANCE	\$ 4,379.46	\$ 4,206.75	\$ 3,407.33	\$ 4,000.00	\$ 3,000.00	\$ 3,000.00
52050	MINOR EQUIPMENT	\$ 412.42	\$ 2,286.59	\$ 1,542.28	\$ 500.00	\$ 500.00	\$ 500.00
52110	ENERGY & UTILITIES	\$ 6,235.86	\$ 5,904.15	\$ 6,031.54	\$ 8,000.00	\$ 7,000.00	\$ 7,000.00
52150	COMMUNICATIONS	\$ 1,258.65	\$ 1,046.73	\$ -	\$ 500.00	\$ 500.00	\$ 500.00
52170	PROFESSIONAL DEV & TRAVEL	\$ -	\$ 495.00	\$ -	\$ -	\$ -	\$ -
52190	PROFESSIONAL SERVICES	\$ 472.00	\$ 327.00	\$ 164.00	\$ 500.00	\$ 500.00	\$ 500.00
52230	OFFICE SUPPLIES	\$ 296.94	\$ 445.21	\$ 422.03	\$ 500.00	\$ 500.00	\$ 500.00
52997	ANIMAL CARE & DISPOSAL	\$ 21,246.96	\$ 10,967.82	\$ 11,114.49	\$ 15,000.00	\$ 12,000.00	\$ 12,000.00
55207	NEW ANIMAL SHELTER	\$ -	\$ 52.00	\$ -	\$ -	\$ -	\$ -
* TOTAL 12292		\$ 34,302.29	\$ 46,267.54	\$ 35,031.71	\$ 51,154.00	\$ 43,154.00	\$ 43,154.00
12293 CIVIL ENFORCEMENT							
51010	DEPT HEAD SALARY & WAGES	\$ -	\$ 2,291.66	\$ 2,499.96	\$ 2,500.00	\$ 2,500.00	\$ 2,500.00
51012	CLERK/ASST SAL & WAGES	\$ -	\$ -	\$ -	\$ 7,059.00	\$ -	\$ -
51023	TEMP SALARY & WAGES	\$ -	\$ -	\$ -	\$ -	\$ -	\$ -
51030	OVERTIME	\$ -	\$ -	\$ -	\$ -	\$ -	\$ -
51460	LONGEVITY	\$ -	\$ -	\$ -	\$ -	\$ -	\$ -
51551	TERMINATION LEAVE	\$ -	\$ -	\$ -	\$ -	\$ -	\$ -
52190	PROFESSIONAL SERVICES	\$ 3,925.07	\$ 3,400.49	\$ 9,055.00	\$ 7,000.00	\$ 10,000.00	\$ 10,000.00
52230	OFFICE SUPPLIES	\$ 766.81	\$ 715.57	\$ 112.99	\$ 500.00	\$ 500.00	\$ 500.00
* TOTAL 12293		\$ 4,691.88	\$ 6,407.72	\$ 11,667.95	\$ 17,059.00	\$ 13,000.00	\$ 13,000.00
12294 FORESTRY							
52030	REPAIRS & MAINTENANCE	\$ 2,177.60	\$ 3,031.40	\$ 3,659.93	\$ 3,500.00	\$ 3,500.00	\$ 3,500.00
52050	MINOR EQUIPMENT	\$ 3,066.45	\$ 1,115.91	\$ 1,325.09	\$ 2,100.00	\$ 2,100.00	\$ 2,100.00

ORG/ OBJ	DEPARTMENT	2006 EXPENDED	2007 EXPENDED	2008 EXPENDED	2009 CITY COUNCIL	2010 Mayor	2010 Council
12294	FORESTRY						
52150	COMMUNICATIONS	\$ 285.60	\$ -	\$ -	\$ 200.00	\$ 200.00	\$ 200.00
52170	PROFESSIONAL DEV & TRAVEL	\$ 60.00	\$ 60.00	\$ 137.35	\$ 100.00	\$ 100.00	\$ 100.00
52190	PROFESSIONAL SERVICES	\$ 1,199.00	\$ 600.00	\$ 1,204.99	\$ 2,500.00	\$ 2,500.00	\$ 2,500.00
52230	SUPPLIES	\$ 560.95	\$ 999.98	\$ 583.58	\$ 1,000.00	\$ 1,000.00	\$ 1,000.00
57090	CLOTH/UNIFORM ALLOWANCE	\$ 1,000.00	\$ 1,000.00	\$ 1,200.00	\$ 1,200.00	\$ -	\$ -
* TOTAL 12294		\$ 8,349.60	\$ 6,807.29	\$ 8,110.94	\$ 10,600.00	\$ 9,400.00	\$ 9,400.00

13999 REGIONAL SCHOOL ASSESSMENTS							
56500	MONT VOC TEC SCH ASSESS	\$ 547,285.00	\$ 564,373.01	\$ 598,963.00	\$ 674,258.00	\$ 683,780.00	\$ 683,780.00
* TOTAL 13999		\$ 547,285.00	\$ 564,373.01	\$ 598,963.00	\$ 674,258.00	\$ 683,780.00	\$ 683,780.00

14410 SURVEY							
51010	DEPT HEAD SALARY & WAGES	\$ 79,485.98	\$ 79,181.45	\$ 79,335.13	\$ 52,401.00	\$ 43,333.00	\$ 43,333.00
51011	ASSISTANT SALARY & WAGES	\$ 30,035.21	\$ 30,350.09	\$ 31,864.45	\$ 31,865.00	\$ 29,310.00	\$ 29,310.00
51013	GIS / AUTOCAD TECHNICIAN	\$ 40,753.89	\$ 42,436.16	\$ 45,172.84	\$ 45,173.00	\$ 44,827.00	\$ 44,827.00
51020	ENGINEERS SALARY & WAGES	\$ 41,175.65	\$ 42,336.27	\$ 44,594.46	\$ 44,595.00	\$ 20,509.00	\$ 20,509.00
51023	TEMP CLERK SALARY & WAGES	\$ -	\$ 566.23	\$ -	\$ -	\$ -	\$ -
51030	OVERTIME	\$ -	\$ 810.72	\$ -	\$ 500.00	\$ 1,000.00	\$ 1,000.00
51460	LONGEVITY	\$ 1,410.00	\$ 1,470.00	\$ 1,590.00	\$ 1,650.00	\$ 1,570.00	\$ 1,570.00
52030	REPAIRS & MAINTENANCE	\$ 1,450.18	\$ 1,107.65	\$ 445.30	\$ 1,500.00	\$ 750.00	\$ 750.00
52050	MINOR EQUIPMENT	\$ 1,106.67	\$ 18,184.99	\$ 2,106.33	\$ 3,000.00	\$ -	\$ -
52150	COMMUNICATIONS	\$ 664.46	\$ 637.06	\$ 469.44	\$ 1,000.00	\$ 1,000.00	\$ 1,000.00
52170	PROFESSIONAL DEV & TRAVEL	\$ 1,786.33	\$ 816.46	\$ 60.00	\$ 2,500.00	\$ 1,250.00	\$ 1,250.00
52190	PROFESSIONAL SERVICES	\$ 11,312.00	\$ 21,215.00	\$ 11,606.38	\$ 19,500.00	\$ 17,000.00	\$ 17,000.00
52230	OFFICE SUPPLIES	\$ 2,841.41	\$ 2,404.71	\$ 2,348.56	\$ 5,500.00	\$ 4,000.00	\$ 4,000.00
52240	VEHICLE SUPPLIES	\$ 248.10	\$ 331.89	\$ 39.00	\$ 500.00	\$ 500.00	\$ 500.00
57090	CLOTH/UNIFORM ALLOWANCE	\$ 350.00	\$ 350.00	\$ 350.00	\$ 350.00	\$ 350.00	\$ 350.00
* TOTAL 14410		\$ 212,619.88	\$ 242,198.68	\$ 219,981.89	\$ 210,034.00	\$ 165,399.00	\$ 165,399.00

14420 HIGHWAY							
52030	REPAIRS & MAINTENANCE	\$ 75,738.52	\$ 74,583.24	\$ 60,368.62	\$ 75,000.00	\$ 70,000.00	\$ 70,000.00
52032	TRAFFIC MAINTENANCE	\$ 21,556.29	\$ 15,191.15	\$ 7,596.51	\$ 40,000.00	\$ 40,000.00	\$ 40,000.00
52033	PARKING MAINTENANCE	\$ -	\$ 20,224.48	\$ 20,550.92	\$ 10,000.00	\$ 10,000.00	\$ 10,000.00
52034	CRUSHER MAINTENANCE	\$ 330.00	\$ 4,331.40	\$ 5,950.00	\$ 2,000.00	\$ 2,000.00	\$ 2,000.00
52038	UNACCEPTED ROAD MAINTENAN	\$ 1,041.48	\$ 13.49	\$ -	\$ 2,000.00	\$ 100.00	\$ 100.00
52050	MINOR EQUIPMENT	\$ 7,679.87	\$ 11,407.41	\$ 3,896.94	\$ 10,000.00	\$ 10,000.00	\$ 10,000.00
52070	EQUIPMENT RENTAL	\$ 2,700.00	\$ 2,700.00	\$ 900.00	\$ 3,000.00	\$ 3,000.00	\$ 1,000.00
52110	ENERGY & UTILITIES	\$ 48.00	\$ 48.08	\$ 48.01	\$ 100.00	\$ 100.00	\$ 100.00
52120	STREET LIGHTING	\$ 115,582.86	\$ 116,241.14	\$ 124,050.50	\$ 130,000.00	\$ 136,500.00	\$ 136,500.00
52150	COMMUNICATIONS	\$ 1,259.19	\$ 3,170.18	\$ 4,145.22	\$ 3,000.00	\$ 3,000.00	\$ 3,000.00

ORG/ OBJ	DEPARTMENT	2006 EXPENDED	2007 EXPENDED	2008 EXPENDED	2009 CITY COUNCIL	2010 Mayor	2010 Council
14420	HIGHWAY						
52170	PROFESSIONAL DEV & TRAVEL	\$ 1,495.49	\$ 460.00	\$ 790.00	\$ 1,000.00	\$ 1,000.00	\$ 1,000.00
52190	PROFESSIONAL SERVICES	\$ 1,091.59	\$ 1,081.09	\$ 1,030.67	\$ 1,000.00	\$ 1,000.00	\$ 1,000.00
52210	SNOW & ICE	\$ 381,441.16	\$ 323,044.17	\$ 624,090.01	\$ 150,000.00	\$ 175,000.00	\$ 175,000.00
52230	OFFICE SUPPLIES	\$ 2,371.34	\$ 559.52	\$ 1,145.28	\$ 1,000.00	\$ 1,000.00	\$ 1,000.00
52240	VEHICLE SUPPLIES	\$ 6,137.56	\$ 4,531.10	\$ 9,289.04	\$ 6,000.00	\$ 7,000.00	\$ 7,000.00
52241	CRACK SEALING STREETS	\$ -	\$ -	\$ -	\$ -	\$ -	\$ -
52242	COLD PATCH	\$ 5,461.46	\$ 9,063.00	\$ 20,654.65	\$ 15,000.00	\$ 15,000.00	\$ 15,000.00
52997	DRAIN ACCOUNT	\$ 30,889.62	\$ 43,753.25	\$ 31,260.33	\$ 50,000.00	\$ 50,000.00	\$ 50,000.00
52998	BERM ACCOUNT	\$ 259.60	\$ -	\$ 1,000.00	\$ 1,000.00	\$ 1,000.00	\$ 1,000.00
55123	NEW EQUIPMENT	\$ -	\$ -	\$ -	\$ -	\$ -	\$ -
57090	CLOTH/UNIFORM ALLOWANCE	\$ 6,700.00	\$ 6,900.00	\$ 7,400.00	\$ 6,900.00	\$ -	\$ -
58600	SIDEWALK CONSTRUCTION	\$ 8,232.87	\$ 1,160.23	\$ 111.64	\$ 5,000.00	\$ 5,000.00	\$ 5,000.00
58601	GUARD RAILS	\$ -	\$ -	\$ -	\$ -	\$ -	\$ -
58602	ROAD RESURFACING EXPENSES	\$ -	\$ -	\$ -	\$ -	\$ -	\$ -
58603	UPGRADE UNACCEPTED STREETS	\$ -	\$ -	\$ -	\$ -	\$ -	\$ -
* TOTAL 14420		\$ 670,016.90	\$ 638,462.93	\$ 924,278.34	\$ 512,000.00	\$ 530,700.00	\$ 528,700.00

14421	PUBLIC WORKS						
51010	DEPT HEAD SALARY & WAGES	\$ 60,175.64	\$ 59,945.08	\$ 60,292.13	\$ 40,154.00	\$ 39,847.00	\$ 39,847.00
51012	CLERK/ASST SAL & WAGES	\$ 30,035.21	\$ 30,817.80	\$ 36,198.61	\$ 36,199.00	\$ 16,648.00	\$ 16,648.00
51013	PART TIME CLERK	\$ -	\$ -	\$ -	\$ -	\$ -	\$ -
51014	MAINTENANCE CREW SAL&WGS	\$ 584,097.86	\$ 656,394.82	\$ 687,889.68	\$ 688,014.00	\$ 593,201.00	\$ 593,201.00
51030	OVERTIME	\$ 30,797.48	\$ 37,977.30	\$ 40,814.52	\$ 37,800.00	\$ 37,800.00	\$ 37,800.00
51031	WEEK-END STANDBY	\$ 17,730.00	\$ 27,755.00	\$ 32,840.00	\$ 32,680.00	\$ 32,680.00	\$ 32,680.00
51102	WORKING OUT OF GRADE	\$ 7,640.42	\$ 3,404.32	\$ 3,291.55	\$ 5,000.00	\$ 5,000.00	\$ 5,000.00
51104	MECHANIC / WELDER RATING	\$ 1,726.00	\$ 2,080.00	\$ 2,098.00	\$ 2,080.00	\$ 2,080.00	\$ 2,080.00
51105	SICK LEAVE INCENTIVE	\$ 1,919.36	\$ 2,242.44	\$ 2,129.44	\$ 2,000.00	\$ 2,000.00	\$ 2,000.00
51460	LONGEVITY	\$ 10,350.00	\$ 9,360.00	\$ 9,960.00	\$ 10,530.00	\$ 10,930.00	\$ 10,930.00
51551	TERMINATION LEAVE	\$ 28,081.06	\$ -	\$ 902.40	\$ -	\$ -	\$ -
52150	COMMUNICATIONS	\$ 763.18	\$ 949.69	\$ 634.37	\$ 1,000.00	\$ 1,000.00	\$ 1,000.00
52170	PROFESSIONAL DEV & TRAVEL	\$ 157.50	\$ 161.25	\$ 226.25	\$ 200.00	\$ 200.00	\$ 200.00
52190	PROFESSIONAL SERVICES	\$ 571.35	\$ 1,011.95	\$ 680.94	\$ 1,000.00	\$ 1,000.00	\$ 1,000.00
52230	OFFICE SUPPLIES	\$ 1,451.69	\$ 967.77	\$ 1,052.88	\$ 1,000.00	\$ 1,000.00	\$ 1,000.00
55090	BOND--NEW VEHICLES	\$ -	\$ -	\$ -	\$ -	\$ -	\$ -
55123	NEW EQUIPMENT	\$ -	\$ -	\$ -	\$ -	\$ -	\$ -
55145	RADIO TOWER	\$ -	\$ -	\$ -	\$ -	\$ -	\$ -
57090	CLOTH/UNIFORM ALLOWANCE	\$ -	\$ 350.00	\$ 350.00	\$ 350.00	\$ 8,900.00	\$ 8,900.00
* TOTAL 14421		\$ 775,496.75	\$ 833,417.42	\$ 879,360.77	\$ 858,007.00	\$ 752,286.00	\$ 752,286.00

ORG/ OBJ	DEPARTMENT	2006 EXPENDED	2007 EXPENDED	2008 EXPENDED	2009 CITY COUNCIL	2010 Mayor	2010 Council
14429	MUNICIPAL GARAGE						
52030	REPAIRS & MAINTENANCE	\$ 23,533.45	\$ 25,518.89	\$ 26,387.78	\$ 30,000.00	\$ 30,000.00	\$ 30,000.00
52050	MINOR EQUIPMENT	\$ 2,169.00	\$ 3,482.85	\$ 5,617.61	\$ 5,000.00	\$ 5,000.00	\$ 5,000.00
52110	ENERGY & UTILITIES	\$ 40,503.33	\$ 42,897.72	\$ 41,774.79	\$ 51,500.00	\$ 54,075.00	\$ 54,075.00
52150	COMMUNICATIONS	\$ 25.00	\$ 158.80	\$ 537.59	\$ 300.00	\$ 300.00	\$ 300.00
52170	PROFESSIONAL DEV & TRAVEL	\$ 1,473.00	\$ 881.00	\$ 1,736.00	\$ 500.00	\$ 500.00	\$ 500.00
52190	PROFESSIONAL SERVICES	\$ 6,304.48	\$ 6,537.88	\$ 8,212.78	\$ 8,000.00	\$ 8,000.00	\$ 8,000.00
52240	VEHICLE SUPPLIES	\$ 164,084.66	\$ 142,123.38	\$ 240,327.64	\$ 178,500.00	\$ 187,425.00	\$ 187,425.00
55011	HEATING SYSTEM IMPROVEMENTS	\$ -	\$ -	\$ -	\$ -	\$ -	\$ -
55107	OVERHEAD DOOR REPLACEMENTS	\$ -	\$ -	\$ -	\$ -	\$ -	\$ -
55123	NEW EQUIPMENT	\$ -	\$ -	\$ -	\$ -	\$ -	\$ -
55163	BUILDING REHAB	\$ 4,764.84	\$ 12,083.51	\$ 9,374.47	\$ 10,000.00	\$ 10,000.00	\$ 10,000.00
57090	CLOTH/UNIFORM ALLOWANCE	\$ 1,300.00	\$ 2,600.00	\$ 2,650.00	\$ 2,650.00	\$ -	\$ -
57800	COLD STORAGE BUILDING	\$ -	\$ -	\$ -	\$ -	\$ -	\$ -
58152	PAINT BUILDING/RESURFACE	\$ -	\$ -	\$ -	\$ -	\$ -	\$ -
* TOTAL 14429		\$ 244,157.76	\$ 236,284.03	\$ 336,618.66	\$ 286,450.00	\$ 295,300.00	\$ 295,300.00

14430	SOLID WASTE COLLECTION/DISPOS						
51011	TRANSFER STATN SUPER SALARY	\$ -	\$ 25,877.28	\$ -	\$ -	\$ -	\$ -
51018	TRANSFER STATN MONITOR SALARY	\$ -	\$ 9,686.27	\$ -	\$ -	\$ -	\$ -
51030	OVERTIME	\$ -	\$ 97.44	\$ -	\$ -	\$ -	\$ -
52030	REPAIRS & MAINTENANCE	\$ -	\$ 12,234.95	\$ -	\$ -	\$ -	\$ -
52050	MINOR EQUIPMENT	\$ -	\$ 4,379.21	\$ -	\$ -	\$ -	\$ -
52110	ENERGY & UTILITIES	\$ -	\$ 23,511.22	\$ -	\$ -	\$ -	\$ -
52150	COMMUNICATIONS	\$ -	\$ 889.08	\$ -	\$ -	\$ -	\$ -
52170	PROFESSIONAL DEV & TRAVEL	\$ -	\$ 85.00	\$ -	\$ -	\$ -	\$ -
52190	PROFESSIONAL SERVICES	\$ -	\$ 7,421.10	\$ -	\$ -	\$ -	\$ -
52232	TRASH BAGS	\$ -	\$ 24,965.52	\$ -	\$ -	\$ -	\$ -
52361	TRASH DISPOSAL	\$ -	\$ 393,722.38	\$ -	\$ -	\$ -	\$ -
55126	CURBSIDE RECYCLING	\$ -	\$ 234,491.04	\$ -	\$ -	\$ -	\$ -
55361	CURBSIDE RUBBISH COLLECT	\$ -	\$ 425,595.96	\$ -	\$ -	\$ -	\$ -
55363	CURBSIDE YARD WASTE COLLECTION	\$ -	\$ 36,154.98	\$ -	\$ -	\$ -	\$ -
55365	HOUSEHOLD HAZARDOUS WASTE	\$ -	\$ 15,495.00	\$ -	\$ -	\$ -	\$ -
55367	DROP OFF AREA	\$ -	\$ -	\$ -	\$ -	\$ -	\$ -
55371	MUNICIPAL DUMPSTER COLLECTION	\$ -	\$ 27,445.81	\$ -	\$ -	\$ -	\$ -
57090	CLOTH/UNIFORM ALLOWANCE	\$ -	\$ 204.17	\$ -	\$ -	\$ -	\$ -
* TOTAL 14430		\$ -	\$ 1,242,256.41	\$ -	\$ -	\$ -	\$ -

14482	AIRPORT						
52030	REPAIRS & MAINTENANCE	\$ 32,413.07	\$ 3,515.68	\$ 5,763.66	\$ 7,500.00	\$ 3,750.00	\$ 3,750.00
52050	MINOR EQUIPMENT	\$ -	\$ 263.49	\$ 9.85	\$ 450.00	\$ 200.00	\$ 200.00

ORG/ OBJ	DEPARTMENT	2006 EXPENDED	2007 EXPENDED	2008 EXPENDED	2009 CITY COUNCIL	2010 Mayor	2010 Council
14482	AIRPORT						
52110	ENERGY & UTILITIES	\$ 4,724.50	\$ 5,621.51	\$ 5,953.91	\$ 6,800.00	\$ 6,000.00	\$ 6,000.00
52150	COMMUNICATIONS	\$ 1,583.86	\$ 1,998.45	\$ 1,749.99	\$ 1,650.00	\$ 800.00	\$ 800.00
52170	PROFESSIONAL DEV & TRAVEL	\$ -	\$ -	\$ -	\$ -	\$ -	\$ -
52190	AIRPORT MANAGER	\$ -	\$ -	\$ -	\$ -	\$ -	\$ -
52191	PROFESSIONAL SERVICES	\$ 2,775.00	\$ 420.78	\$ 2,155.61	\$ 2,000.00	\$ 1,500.00	\$ 1,500.00
52210	SNOW & ICE	\$ -	\$ -	\$ -	\$ -	\$ -	\$ -
52230	OFFICE SUPPLIES	\$ 89.99	\$ 39.43	\$ 43.95	\$ 100.00	\$ 50.00	\$ 50.00
52240	VEHICLE SUPPLIES	\$ 1,333.38	\$ 758.16	\$ 1,411.42	\$ 1,500.00	\$ 1,200.00	\$ 1,200.00
* TOTAL 14482		\$ 42,919.80	\$ 12,617.50	\$ 17,088.39	\$ 20,000.00	\$ 13,500.00	\$ 13,500.00
14490	CEMETERY						
51024	MAINTENANCE CREW	\$ -	\$ -	\$ -	\$ -	\$ -	\$ -
52030	REPAIRS & MAINTENANCE	\$ 5,665.54	\$ 5,360.39	\$ 4,513.66	\$ 5,500.00	\$ 5,500.00	\$ 5,500.00
52050	MINOR EQUIPMENT	\$ -	\$ 283.82	\$ -	\$ 2,000.00	\$ 2,000.00	\$ 2,000.00
52110	ENERGY & UTILITIES	\$ 737.65	\$ 741.56	\$ 714.14	\$ 2,500.00	\$ 2,500.00	\$ 2,500.00
52150	COMMUNICATIONS	\$ -	\$ -	\$ 146.50	\$ 200.00	\$ 200.00	\$ 200.00
52230	OFFICE SUPPLIES	\$ 300.00	\$ 272.35	\$ 317.75	\$ 400.00	\$ 400.00	\$ 400.00
52985	REWARD-CEMETERY DAMAGES	\$ -	\$ -	\$ -	\$ 500.00	\$ -	\$ -
57090	CLOTH/UNIFORM ALLOWANCE	\$ 1,100.00	\$ 1,200.00	\$ 1,000.00	\$ 500.00	\$ -	\$ -
* TOTAL 14490		\$ 7,803.19	\$ 7,858.12	\$ 6,692.05	\$ 11,600.00	\$ 10,600.00	\$ 10,600.00
15512	HEALTH						
51010	DEPT HEAD SALARY & WAGES	\$ 55,628.10	\$ 61,900.54	\$ 68,636.77	\$ 70,270.00	\$ 34,866.00	\$ 34,866.00
51011	P/T AST SANI INSPE SAL&WG	\$ 10,401.88	\$ 28,499.71	\$ 30,397.30	\$ 30,234.00	\$ 30,002.00	\$ 30,002.00
51012	CLERK/ASST SAL & WAGES	\$ 43,609.96	\$ 30,817.80	\$ 35,130.60	\$ 35,131.00	\$ 32,313.00	\$ 32,313.00
51013	P/T CLERK/ASST SALARY & WAGES	\$ -	\$ 16,592.95	\$ 17,826.13	\$ 17,225.00	\$ 17,225.00	\$ 17,225.00
51014	BOARD & COMM SAL & WAGES	\$ 2,998.50	\$ 3,496.21	\$ 3,331.96	\$ 3,500.00	\$ -	\$ -
51015	SCHOOL PHYSICIAN SAL&WGS	\$ -	\$ -	\$ -	\$ -	\$ -	\$ -
51016	AUDIO VISUAL EXAM SAL&WGS	\$ -	\$ -	\$ -	\$ -	\$ -	\$ -
51017	ANIMAL INSP SALARY & WAGE	\$ 648.96	\$ -	\$ -	\$ -	\$ -	\$ -
51018	LANDFILL ATTENDENTS SAL&W	\$ -	\$ -	\$ -	\$ -	\$ -	\$ -
51023	TEMP CLERK SALARY & WAGES	\$ -	\$ -	\$ -	\$ -	\$ -	\$ -
51030	OVERTIME	\$ 1.86	\$ 108.95	\$ 2,068.94	\$ 1,000.00	\$ 1,000.00	\$ 1,000.00
51460	LONGEVITY	\$ 690.00	\$ 480.00	\$ 540.00	\$ 600.00	\$ 535.00	\$ 535.00
51551	TERMINATION LEAVE	\$ -	\$ -	\$ -	\$ -	\$ -	\$ -
52030	REPAIRS & MAINTENANCE	\$ 3,107.20	\$ 1,136.93	\$ 1,158.15	\$ 500.00	\$ 500.00	\$ 500.00
52050	MINOR EQUIPMENT	\$ 720.20	\$ 2,336.69	\$ -	\$ 1,000.00	\$ 1,000.00	\$ 1,000.00
52110	ENERGY & UTILITIES	\$ 22,374.77	\$ 52.64	\$ -	\$ -	\$ -	\$ -
52150	COMMUNICATIONS	\$ 2,299.44	\$ 3,850.37	\$ 5,073.97	\$ 4,000.00	\$ 4,000.00	\$ 4,000.00
52170	PROFESSIONAL DEV & TRAVEL	\$ 450.36	\$ 1,230.20	\$ 958.55	\$ 1,500.00	\$ 1,500.00	\$ 1,500.00

ORG/ OBJ	DEPARTMENT	2006 EXPENDED	2007 EXPENDED	2008 EXPENDED	2009 CITY COUNCIL	2010 Mayor	2010 Council
15512	HEALTH						
52190	PROFESSIONAL SERVICES	\$ 126,115.30	\$ 1,535.20	\$ 1,962.36	\$ 7,000.00	\$ 7,000.00	\$ 7,000.00
52191	PROF SERV-ENGINEER CELL 1,2,3	\$ -	\$ -	\$ -	\$ -	\$ -	\$ -
52192	LANDFILL MONITORING SERVICES	\$ 46,546.51	\$ -	\$ -	\$ -	\$ -	\$ -
52230	OFFICE SUPPLIES	\$ 6,288.93	\$ 3,841.09	\$ 2,704.00	\$ 4,000.00	\$ 4,000.00	\$ 4,000.00
52232	TRASH BAGS	\$ -	\$ -	\$ -	\$ -	\$ -	\$ -
52361	TRASH DISPOSAL	\$ 273,039.70	\$ -	\$ -	\$ -	\$ -	\$ -
54100	NURSING SERVICES	\$ 12,349.00	\$ 13,000.00	\$ 14,000.00	\$ 14,476.00	\$ 14,476.00	\$ 14,476.00
55126	CURBSIDE RECYCLING	\$ 208,083.26	\$ -	\$ -	\$ -	\$ -	\$ -
55361	CURBSIDE RUBBISH COLLECT	\$ 377,666.63	\$ -	\$ -	\$ -	\$ -	\$ -
55363	CURBSIDE YARD WASTE COLLECTION	\$ 23,333.28	\$ 7,777.76	\$ -	\$ -	\$ -	\$ -
55365	HOUSEHOLD HAZARDOUS WASTE	\$ 7,500.00	\$ -	\$ -	\$ -	\$ -	\$ -
55367	DROP OFF AREA	\$ -	\$ -	\$ -	\$ -	\$ -	\$ -
55369	LANDFILL OPERATIONS	\$ 258,070.40	\$ -	\$ -	\$ -	\$ -	\$ -
55371	MUNICIPAL DUMPSTER COLLECTION	\$ 21,721.89	\$ -	\$ 21,951.13	\$ 22,500.00	\$ 20,000.00	\$ 20,000.00
57090	CLOTH/UNIFORM ALLOWANCE	\$ -	\$ 700.00	\$ 700.00	\$ 700.00	\$ 700.00	\$ 700.00
* TOTAL 15512		\$ 1,503,646.13	\$ 177,357.04	\$ 206,439.86	\$ 213,636.00	\$ 169,117.00	\$ 169,117.00

15541	COUNCIL ON AGING						
51010	DEPT HEAD SALARY & WAGES	\$ 40,056.83	\$ 44,393.18	\$ 49,062.38	\$ 50,193.00	\$ 49,808.00	\$ 49,808.00
51012	CLERKS/DISPATCHER SAL&WAG	\$ 30,035.21	\$ 30,817.80	\$ 31,864.45	\$ 31,865.00	\$ 29,310.00	\$ 29,310.00
51013	VAN DRIVER SAL & WAGES	\$ 29,791.68	\$ 30,555.20	\$ 31,591.44	\$ 31,592.00	\$ 31,350.00	\$ 31,350.00
51016	CUSTODIAN SALARY & WAGES	\$ 16,333.04	\$ 34,036.08	\$ 35,191.67	\$ 35,192.00	\$ 32,370.00	\$ 32,370.00
51023	ALT VAN DRIVER SALARY & WAGES	\$ 6,241.29	\$ 1,463.34	\$ 1,757.03	\$ 4,000.00	\$ 3,000.00	\$ 3,000.00
51025	OUTREACH PROGRAM SALARY & WAGE	\$ -	\$ -	\$ -	\$ -	\$ -	\$ -
51030	OVERTIME	\$ 836.69	\$ 1,167.57	\$ 1,113.75	\$ 600.00	\$ 600.00	\$ 600.00
51460	LONGEVITY	\$ 1,950.00	\$ 2,040.00	\$ 2,130.00	\$ 2,370.00	\$ 2,090.00	\$ 2,090.00
52030	REPAIRS & MAINTENANCE	\$ 3,427.31	\$ 3,265.81	\$ 2,580.08	\$ 3,500.00	\$ 500.00	\$ 500.00
52050	MINOR EQUIPMENT	\$ -	\$ -	\$ -	\$ 500.00	\$ 500.00	\$ 500.00
52110	ENERGY & UTILITIES	\$ 14,289.05	\$ 18,229.74	\$ 22,316.99	\$ 19,000.00	\$ 6,141.00	\$ 6,141.00
52150	COMMUNICATIONS	\$ -	\$ -	\$ -	\$ 200.00	\$ 200.00	\$ 200.00
52170	PROFESSIONAL DEV & TRAVEL	\$ -	\$ -	\$ -	\$ -	\$ -	\$ -
52190	PROFESSIONAL SERVICES	\$ -	\$ -	\$ -	\$ -	\$ -	\$ -
52230	OFFICE SUPPLIES	\$ 1,095.23	\$ 595.28	\$ 239.47	\$ 700.00	\$ 200.00	\$ 200.00
52990	HOME CARE ELDERLY	\$ -	\$ -	\$ -	\$ -	\$ -	\$ -
52995	RECREATIONAL	\$ -	\$ -	\$ -	\$ -	\$ -	\$ -
52996	MEDICAL	\$ -	\$ -	\$ -	\$ -	\$ -	\$ -
52999	OUTREACH PROGRAM	\$ -	\$ -	\$ -	\$ -	\$ -	\$ -
57090	CLOTH/UNIFORM ALLOWANCE	\$ -	\$ 350.00	\$ 350.00	\$ 350.00	\$ 350.00	\$ 350.00
57800	BUILDING REPAIRS	\$ 2,500.00	\$ 9,663.06	\$ 10,813.11	\$ -	\$ -	\$ -
* TOTAL 15541		\$ 146,556.33	\$ 176,577.06	\$ 189,010.37	\$ 180,062.00	\$ 156,419.00	\$ 156,419.00

ORG/ OBJ	DEPARTMENT	2006 EXPENDED	2007 EXPENDED	2008 EXPENDED	2009 CITY COUNCIL	2010 Mayor	2010 Council
15542	YOUTH COMMISSION						
52230	OFFICE SUPPLIES	\$ -	\$ -	\$ -	\$ 100.00	\$ 100.00	\$ 100.00
52995	YOUTH ACTIVITIES	\$ -	\$ -	\$ -	\$ 100.00	\$ 200.00	\$ 200.00
* TOTAL 15542		\$ -	\$ -	\$ -	\$ 200.00	\$ 300.00	\$ 300.00
15543	VETERANS						
51010	DEPT HEAD SALARY & WAGES	\$ 41,969.74	\$ 45,451.38	\$ 49,275.65	\$ 50,193.00	\$ 49,808.00	\$ 49,808.00
51012	CLERK/ASST SAL & WAGES	\$ -	\$ -	\$ -	\$ -	\$ -	\$ -
51023	TEMPORARY SALARY & WAGES	\$ -	\$ -	\$ -	\$ -	\$ -	\$ -
51460	LONGEVITY	\$ 420.00	\$ 450.00	\$ 480.00	\$ 510.00	\$ 340.00	\$ 340.00
52030	REPAIRS & MAINTENANCE	\$ 629.55	\$ 417.60	\$ 50.00	\$ 700.00	\$ 500.00	\$ 500.00
52050	MINOR EQUIPMENT	\$ -	\$ 6,874.70	\$ -	\$ -	\$ -	\$ -
52170	PROFESSIONAL DEV & TRAVEL	\$ 35.00	\$ (13.80)	\$ -	\$ 100.00	\$ 70.00	\$ 70.00
52230	OFFICE SUPPLIES	\$ 943.74	\$ 530.58	\$ 893.00	\$ 800.00	\$ 1,000.00	\$ 1,000.00
57100	VETERANS BENEFITS	\$ 206,408.75	\$ 240,266.29	\$ 338,461.52	\$ 325,000.00	\$ 510,000.00	\$ 510,000.00
* TOTAL 15543		\$ 250,406.78	\$ 293,976.75	\$ 389,160.17	\$ 377,303.00	\$ 561,718.00	\$ 561,718.00
15549	DISABILITIES COMMISSION						
51012	CLERK/ASST SAL & WAGES	\$ -	\$ -	\$ -	\$ -	\$ -	\$ -
52150	COMMUNICATIONS	\$ -	\$ -	\$ -	\$ -	\$ -	\$ -
52170	PROFESSIONAL DEV & TRAVEL	\$ -	\$ -	\$ -	\$ 250.00	\$ 250.00	\$ 250.00
52190	PROFESSIONAL SERVICES	\$ -	\$ -	\$ -	\$ -	\$ -	\$ -
52230	OFFICE SUPPLIES	\$ -	\$ -	\$ -	\$ 50.00	\$ 50.00	\$ 50.00
* TOTAL 15549		\$ -	\$ -	\$ -	\$ 300.00	\$ 300.00	\$ 300.00
16610	LIBRARY						
51010	DEPT HEAD SALARY & WAGES	\$ 49,336.26	\$ 56,196.66	\$ 63,475.74	\$ 65,250.00	\$ 64,750.00	\$ 64,750.00
51011	COOR ADLT/LIB SERV SAL&WG	\$ 34,792.43	\$ 35,679.28	\$ 36,890.80	\$ 36,891.00	\$ 36,609.00	\$ 36,609.00
51012	TECH/PUB SERV LIB II SAL&	\$ 121,016.76	\$ 122,804.64	\$ 126,819.76	\$ 126,780.00	\$ 125,808.00	\$ 125,808.00
51013	TECH/PUB SERV LIB III SAL & WA	\$ -	\$ 32,608.34	\$ 34,160.50	\$ 33,604.00	\$ 33,347.00	\$ 33,347.00
51014	COOR YTH/LIB SERV SAL&WGS	\$ 34,906.27	\$ 35,715.88	\$ 36,890.80	\$ 36,891.00	\$ 36,609.00	\$ 36,609.00
51015	LIBRARIANS P/T SAL & WGS	\$ 74,715.30	\$ 51,740.54	\$ 61,556.88	\$ 57,000.00	\$ 20,000.00	\$ 20,000.00
51016	CUSTODIAN SALARY & WAGES	\$ 32,426.64	\$ 33,271.68	\$ 34,401.39	\$ 34,402.00	\$ 34,138.00	\$ 34,138.00
51017	LIBRARIANS F/T SALARY & WAGES	\$ -	\$ -	\$ -	\$ -	\$ -	\$ -
51030	OVERTIME	\$ 795.59	\$ 911.55	\$ 1,299.78	\$ 800.00	\$ -	\$ -
51460	LONGEVITY	\$ 3,360.00	\$ 3,765.00	\$ 4,380.00	\$ 4,335.00	\$ 2,825.00	\$ 2,825.00
51551	TERMINATION LEAVE	\$ -	\$ 758.05	\$ 345.35	\$ -	\$ -	\$ -
52030	REPAIRS & MAINTENANCE	\$ 300.00	\$ 300.00	\$ 300.00	\$ 300.00	\$ 300.00	\$ 300.00
52110	ENERGY & UTILITIES	\$ 31,428.80	\$ 44,957.72	\$ 45,000.00	\$ 45,000.00	\$ 60,000.00	\$ 45,000.00
52150	COMMUNICATIONS	\$ 2,944.95	\$ 2,637.71	\$ 2,617.11	\$ 3,000.00	\$ 3,000.00	\$ 3,000.00
52190	PROFESSIONAL SERVICES	\$ 25,606.00	\$ 24,858.00	\$ 26,038.00	\$ 27,998.00	\$ 28,000.00	\$ 28,000.00

ORG/ OBJ	DEPARTMENT	2006 EXPENDED	2007 EXPENDED	2008 EXPENDED	2009 CITY COUNCIL	2010 Mayor	2010 Council
16610	LIBRARY						
52230	OFFICE SUPPLIES	\$ 1,200.00	\$ 1,646.51	\$ 2,000.00	\$ 2,000.00	\$ 2,875.00	\$ 1,875.00
52231	LIBRARY SUPPLIES	\$ 1,500.00	\$ 2,348.62	\$ 3,053.04	\$ 2,500.00	\$ 3,500.00	\$ 3,500.00
52270	BOOKS & PERIODICALS	\$ 76,516.25	\$ 90,796.44	\$ 95,813.39	\$ 90,000.00	\$ 78,000.00	\$ 34,000.00
53333	LIBRARY DRAW IN TRANSIT	\$ -	\$ -	\$ -	\$ -	\$ -	\$ -
57500	GENERAL LIABILITY	\$ 6,664.00	\$ 9,677.00	\$ 9,121.46	\$ 11,000.00	\$ 11,000.00	\$ 11,000.00
58205	LIBRARY CONSTRUCTION	\$ 109,000.00	\$ 137,000.00	\$ 150,000.00	\$ 149,000.00	\$ -	\$ -
* TOTAL 16610		\$ 606,509.25	\$ 687,673.62	\$ 734,164.00	\$ 726,751.00	\$ 540,761.00	\$ 480,761.00
16620	RECREATION						
52030	REPAIR & MAINTENANCE-BIKE PATH	\$ -	\$ -	\$ -	\$ -	\$ -	\$ -
52170	PROFESSIONAL DEV & TRAVEL	\$ -	\$ -	\$ -	\$ -	\$ -	\$ -
52190	PROFESSIONAL SERVICES	\$ -	\$ -	\$ -	\$ -	\$ -	\$ -
52230	RECREATION SUPPLIES	\$ 430.45	\$ -	\$ -	\$ -	\$ -	\$ -
55057	CELEBRATIONS&SPEC EVENTS	\$ 1,104.00	\$ 806.13	\$ 731.54	\$ 1,000.00	\$ 1,000.00	\$ 1,000.00
* TOTAL 16620		\$ 1,534.45	\$ 806.13	\$ 731.54	\$ 1,000.00	\$ 1,000.00	\$ 1,000.00
16621	GREENWOOD MEMORIAL POOL						
51010	DEPT HEAD SALARY & WAGES	\$ 38,465.88	\$ 43,513.08	\$ 48,885.00	\$ 50,193.00	\$ 49,808.00	\$ 49,808.00
51012	CLERK/ASST SAL & WAGES	\$ 30,035.21	\$ 30,817.80	\$ 31,864.44	\$ 17,225.00	\$ -	\$ -
51013	P/T LIFE GUARDS SAL&WGS	\$ 40,358.14	\$ 39,100.10	\$ 40,079.07	\$ 44,000.00	\$ 30,000.00	\$ 30,000.00
51016	CLEANER SALARY & WAGES	\$ -	\$ -	\$ -	\$ -	\$ -	\$ -
51030	OVERTIME	\$ -	\$ -	\$ -	\$ -	\$ -	\$ -
51460	LONGEVITY	\$ 1,590.00	\$ 1,650.00	\$ 1,785.00	\$ 1,860.00	\$ 700.00	\$ 700.00
51551	TERMINATION LEAVE	\$ -	\$ -	\$ -	\$ -	\$ -	\$ -
52030	REPAIRS & MAINTENANCE	\$ 13,327.64	\$ 19,002.05	\$ 10,586.50	\$ 10,000.00	\$ 3,000.00	\$ 3,000.00
52050	MINOR EQUIPMENT	\$ -	\$ -	\$ -	\$ -	\$ -	\$ -
52110	ENERGY & UTILITIES	\$ 58,369.11	\$ 55,185.65	\$ 69,882.86	\$ 80,000.00	\$ 30,000.00	\$ 30,000.00
52150	COMMUNICATIONS	\$ 919.94	\$ 569.36	\$ 693.66	\$ 800.00	\$ 800.00	\$ 800.00
52170	PROFESSIONAL DEV & TRAVEL	\$ -	\$ -	\$ -	\$ -	\$ -	\$ -
52230	OFFICE SUPPLIES	\$ 117.83	\$ 346.88	\$ 73.09	\$ 400.00	\$ 400.00	\$ 400.00
52231	POOL SUPPLIES	\$ 7,306.81	\$ 9,135.16	\$ 9,557.93	\$ 9,200.00	\$ 8,200.00	\$ 8,200.00
55161	NEW POOL FILTRATION SYSTEM	\$ -	\$ -	\$ -	\$ -	\$ -	\$ -
55162	NEW FIBERGLASS LOCKERS	\$ -	\$ -	\$ -	\$ -	\$ -	\$ -
* TOTAL 16621		\$ 190,490.56	\$ 199,320.08	\$ 213,407.55	\$ 213,678.00	\$ 122,908.00	\$ 122,908.00
16625	MUNICIPAL GROUNDS						
51010	DEPT HEAD SALARY & WAGES	\$ 47,997.23	\$ 55,455.92	\$ 63,326.40	\$ 65,250.00	\$ 64,750.00	\$ 64,750.00
51012	CLERK/ASST SAL & WAGES	\$ 30,035.20	\$ 30,817.80	\$ 31,864.45	\$ 28,218.00	\$ 14,655.00	\$ 14,655.00
51013	MAINTENANCE CREW SAL&WGS	\$ 143,299.44	\$ 137,194.26	\$ 151,345.84	\$ 156,528.00	\$ 81,579.00	\$ 81,579.00
51014	BOARD & COMM SAL & WAGES	\$ 2,700.00	\$ 2,700.00	\$ 2,700.00	\$ 2,700.00	\$ -	\$ -

ORG/ OBJ	DEPARTMENT	2006 EXPENDED	2007 EXPENDED	2008 EXPENDED	2009 CITY COUNCIL	2010 Mayor	2010 Council
16625	MUNICIPAL GROUNDS						
51020	P/T PLAYGROUNDS SAL&WGS	\$ -	\$ -	\$ -	\$ -	\$ -	\$ -
51030	OVERTIME	\$ 7,296.07	\$ 5,892.26	\$ 9,270.90	\$ 8,000.00	\$ 8,000.00	\$ 8,000.00
51102	WORKING OUT OF GRADE	\$ 1,038.64	\$ 913.60	\$ 1,340.40	\$ 2,000.00	\$ 2,000.00	\$ 2,000.00
51105	SICK LEAVE INCENTIVE	\$ 1,432.64	\$ 755.00	\$ 335.60	\$ 1,500.00	\$ 1,500.00	\$ 1,500.00
51460	LONGEVITY	\$ 4,170.00	\$ 4,380.00	\$ 3,300.00	\$ 3,420.00	\$ 2,050.00	\$ 2,050.00
51551	TERMINATION LEAVE	\$ -	\$ 19,387.03	\$ -	\$ -	\$ -	\$ -
52030	REPAIRS & MAINTENANCE	\$ 11,282.98	\$ 7,471.16	\$ 10,328.85	\$ 10,000.00	\$ 10,000.00	\$ 10,000.00
52050	MINOR EQUIPMENT	\$ 3,552.86	\$ 68.34	\$ -	\$ 2,000.00	\$ 2,000.00	\$ 2,000.00
52150	COMMUNICATIONS	\$ 952.61	\$ 1,363.69	\$ 853.98	\$ 1,000.00	\$ 1,000.00	\$ 1,000.00
52230	OFFICE SUPPLIES	\$ 711.55	\$ 1,573.36	\$ 291.82	\$ 1,000.00	\$ 1,000.00	\$ 1,000.00
52990	FLOOD CONTROL	\$ -	\$ -	\$ -	\$ -	\$ -	\$ -
57090	CLOTH/UNIFORM ALLOWANCE	\$ -	\$ 350.00	\$ 350.00	\$ 850.00	\$ 1,550.00	\$ 1,550.00
* TOTAL 16625		\$ 254,469.22	\$ 268,322.42	\$ 275,308.24	\$ 282,466.00	\$ 190,084.00	\$ 190,084.00
16630	PARKS						
52030	REPAIRS & MAINTENANCE	\$ 55.00	\$ 391.97	\$ -	\$ 500.00	\$ 500.00	\$ 500.00
52110	ENERGY & UTILITIES	\$ 1,451.49	\$ 1,699.37	\$ 1,214.22	\$ 2,200.00	\$ 2,200.00	\$ 2,200.00
52150	COMMUNICATIONS	\$ 102.00	\$ -	\$ -	\$ 300.00	\$ 300.00	\$ 300.00
58150	PLAYGROUND IMPROVEMENTS	\$ 7,186.55	\$ 5,831.01	\$ 5,116.66	\$ 6,000.00	\$ 6,000.00	\$ 6,000.00
* TOTAL 16630		\$ 8,795.04	\$ 7,922.35	\$ 6,330.88	\$ 9,000.00	\$ 9,000.00	\$ 9,000.00
16650	HISTORICAL COMMISSION						
52170	PROFESSIONAL DEV & TRAVEL	\$ -	\$ -	\$ -	\$ -	\$ -	\$ -
52190	PROFESSIONAL SERVICES	\$ -	\$ -	\$ -	\$ -	\$ -	\$ -
52230	OFFICE SUPPLIES	\$ -	\$ -	\$ -	\$ 300.00	\$ 200.00	\$ 200.00
55141	CEMETERY RESTORATION	\$ -	\$ -	\$ -	\$ -	\$ -	\$ -
55149	LUCY STONE COMM MARKERS	\$ -	\$ -	\$ -	\$ -	\$ -	\$ -
55150	MARKER, UPTOWN HISTORIC DIST	\$ -	\$ -	\$ -	\$ -	\$ -	\$ -
55151	PRINTING, GARDNER: A PORTRAIT	\$ -	\$ -	\$ -	\$ -	\$ -	\$ -
* TOTAL 16650		\$ -	\$ -	\$ -	\$ 300.00	\$ 200.00	\$ 200.00
17710	DEBT SERVICE						
57600	PRINCIPAL - INSIDE DEBT	\$ 930,094.00	\$ 1,758,094.00	\$ 1,036,094.00	\$ 1,038,094.00	\$ 698,094.00	\$ 698,094.00
57601	PRINCIPAL - OUTSIDE DEBT	\$ 815,900.00	\$ 791,390.00	\$ 787,805.00	\$ 786,763.00	\$ 778,200.00	\$ 778,200.00
57610	INTEREST - INSIDE DEBT	\$ 166,497.99	\$ 142,305.25	\$ 116,736.00	\$ 88,600.00	\$ 64,667.00	\$ 64,667.00
57611	INTEREST - OUTSIDE DEBT	\$ 411,755.60	\$ 403,221.90	\$ 360,908.75	\$ 323,762.00	\$ 292,003.00	\$ 292,003.00
57621	INTEREST TEMPORARY LOANS	\$ 44,603.17	\$ 48,786.01	\$ 39,238.03	\$ 90,000.00	\$ 60,000.00	\$ 60,000.00
* TOTAL 17710		\$ 2,368,850.76	\$ 3,143,797.16	\$ 2,340,781.78	\$ 2,327,219.00	\$ 1,892,964.00	\$ 1,892,964.00

ORG/ OBJ	DEPARTMENT	2006 EXPENDED	2007 EXPENDED	2008 EXPENDED	2009 CITY COUNCIL	2010 Mayor	2010 Council
19910	CONTRIBUTORY RETIREMENT						
51011	EXECUTIVE SEC SAL & WAGES	\$ 25,101.20	\$ 38,050.22	\$ 42,958.23	\$ 46,500.00	\$ 47,672.00	\$ 47,672.00
51014	BOARD & COMM SAL & WAGES	\$ 15,300.00	\$ 15,300.00	\$ 15,300.00	\$ 15,300.00	\$ 15,300.00	\$ 15,300.00
51023	TEMP SALARY & WAGES	\$ 11,324.25	\$ -	\$ -	\$ -	\$ -	\$ -
51030	OVERTIME	\$ -	\$ -	\$ -	\$ -	\$ -	\$ -
51460	LONGEVITY	\$ 270.00	\$ 300.00	\$ 330.00	\$ 360.00	\$ 390.00	\$ 390.00
51551	TERMINATION LEAVE	\$ 20,727.74	\$ -	\$ -	\$ -	\$ -	\$ -
57070	CONTRIB RETIRE ASSESSMENT	\$ 2,183,990.00	\$ 2,276,768.00	\$ 2,361,526.00	\$ 2,432,310.00	\$ 2,473,828.00	\$ 2,473,828.00
57071	MILITARY LEAVE ASSESSMENT	\$ -	\$ -	\$ -	\$ -	\$ -	\$ -
57072	WORKER'S COMP ASSESSMENT	\$ -	\$ -	\$ -	\$ -	\$ -	\$ -
* TOTAL 19910		\$ 2,256,713.19	\$ 2,330,418.22	\$ 2,420,114.23	\$ 2,494,470.00	\$ 2,537,190.00	\$ 2,537,190.00
19911	NON-CONTRIB RETIREMENT						
57181	WIDOW'S ANNUITY	\$ -	\$ -	\$ -	\$ -	\$ -	\$ -
57182	WIDOW'S ANNUITY-CHAP 420	\$ -	\$ -	\$ -	\$ -	\$ -	\$ -
57183	WIDOW'S ANNUITY-CHAP 318	\$ -	\$ -	\$ -	\$ -	\$ -	\$ -
57185	POLICE PENSIONS	\$ -	\$ -	\$ -	\$ -	\$ -	\$ -
57186	FIRE PENSIONS	\$ -	\$ -	\$ -	\$ -	\$ -	\$ -
57188	SCHOOL PENSIONS	\$ 24,791.04	\$ 25,151.04	\$ 25,511.04	\$ 25,872.00	\$ 26,232.00	\$ 26,232.00
57189	HIGHWAY PENSIONS	\$ 7,534.32	\$ 7,760.40	\$ 7,993.20	\$ 8,234.00	\$ -	\$ -
* TOTAL 19911		\$ 32,325.36	\$ 32,911.44	\$ 33,504.24	\$ 34,106.00	\$ 26,232.00	\$ 26,232.00
19914	EMPLOYEE BENEFITS						
52200	111F CLAIMS REVIEW	\$ 6,300.00	\$ 6,300.00	\$ 6,300.00	\$ 6,600.00	\$ 6,600.00	\$ 6,600.00
57010	WORKER'S COMPENSATION	\$ 121,971.21	\$ 157,847.00	\$ 137,745.00	\$ 165,000.00	\$ 160,000.00	\$ 160,000.00
57011	WORKER'S COMPENSATION-SCHOOL	\$ -	\$ -	\$ -	\$ -	\$ -	\$ -
57020	UNEMPLOYMENT COMPENSATION	\$ 510.00	\$ 680.00	\$ 680.00	\$ 1,000.00	\$ 1,000.00	\$ 1,000.00
57021	UNEMPLOYMENT COMPENSATION	\$ 49,185.35	\$ 61,111.39	\$ 61,887.00	\$ 87,600.00	\$ 225,000.00	\$ 225,000.00
57022	UNEMPLOYMENT COMPENSATION-SCH	\$ 100,676.65	\$ 132,216.61	\$ 102,959.00	\$ 137,400.00	\$ -	\$ -
57040	MEDICARE	\$ 83,753.31	\$ 91,542.89	\$ 99,471.47	\$ 115,000.00	\$ 325,000.00	\$ 325,000.00
57041	MEDICARE-SCHOOL	\$ 183,285.23	\$ 190,727.77	\$ 196,986.69	\$ 210,000.00	\$ -	\$ -
57051	LIFE INSURANCE	\$ 24,377.81	\$ 23,786.84	\$ 24,937.88	\$ 65,000.00	\$ 40,000.00	\$ 40,000.00
57052	LIFE INSURANCE-SCHOOL	\$ 29,113.08	\$ 29,004.06	\$ 28,324.56	\$ -	\$ -	\$ -
57060	HEALTH/DENTAL INSURANCE	\$ 1,533,313.26	\$ 2,357,552.40	\$ 2,475,406.29	\$ 5,600,000.00	\$ 5,748,539.00	\$ 5,748,539.00
57061	HEALTH/DENTAL INSURANCE-SCHOOL	\$ 2,468,441.85	\$ 3,034,709.91	\$ 3,132,180.18	\$ -	\$ -	\$ -
57062	CHAP 41 MEDICAL ALLOWANCE	\$ 24,370.63	\$ 16,539.73	\$ 28,573.70	\$ 30,000.00	\$ 30,000.00	\$ 30,000.00
57064	PILGRIM HEALTH INSURANCE	\$ 419,497.77	\$ -	\$ -	\$ -	\$ -	\$ -
* TOTAL	19914	\$ 5,044,796.15	\$ 6,102,018.60	\$ 6,295,451.77	\$ 6,417,600.00	\$ 6,536,139.00	\$ 6,536,139.00

ORG/ OBJ	DEPARTMENT	2006 EXPENDED	2007 EXPENDED	2008 EXPENDED	2009 CITY COUNCIL	2010 Mayor	2010 Council
19945 INSURANCES							
57501	PROP & GEN LIABILITY INS	\$ 243,019.83	\$ 295,566.00	\$ 295,921.00	\$ 320,000.00	\$ 310,000.00	\$ 310,000.00
57503	PUBLIC OFFIC LIABILITY	\$ 52,904.50	\$ 38,492.50	\$ 40,752.50	\$ 65,000.00	\$ 50,000.00	\$ 50,000.00
57504	MOTOR VEHICLE FLOATER	\$ 75,626.00	\$ 65,403.34	\$ 75,921.10	\$ 90,000.00	\$ 80,000.00	\$ 80,000.00
* TOTAL	19945	\$ 371,550.33	\$ 399,461.84	\$ 412,594.60	\$ 475,000.00	\$ 440,000.00	\$ 440,000.00
19999 OTHER EXPENDITURES							
59040	TRANSFER TO STABILIZATION	\$ 110,000.00	\$ -	\$ 111,093.14	\$ -	\$ -	\$ -
59991	PARKING METER FEES TRANSF	\$ -	\$ 19,775.52	\$ 6,336.50	\$ -	\$ -	\$ -
	OTHER TRANSFERS	\$ -	\$ -	\$ 72,647.00	\$ -	\$ -	\$ -
59998	CABLE COMMISSION FEES TRANSFER	\$ 3,772.32	\$ 5,297.02	\$ 12,684.89	\$ -	\$ -	\$ -
* TOTAL 19999		\$ 113,772.32	\$ 25,072.54	\$ 202,761.53	\$ -	\$ -	\$ -
TOTAL GENERAL GOVERNMENT		\$ 11,262,806.63	\$ 23,235,627.19	\$ 23,884,525.59	\$ 23,664,385.00	\$ 22,622,452.00	\$ 22,541,447.00